

## Product datasheet for **TA372872**

### **RBM35A (ESRP1) Rabbit Polyclonal Antibody**

#### **Product data:**

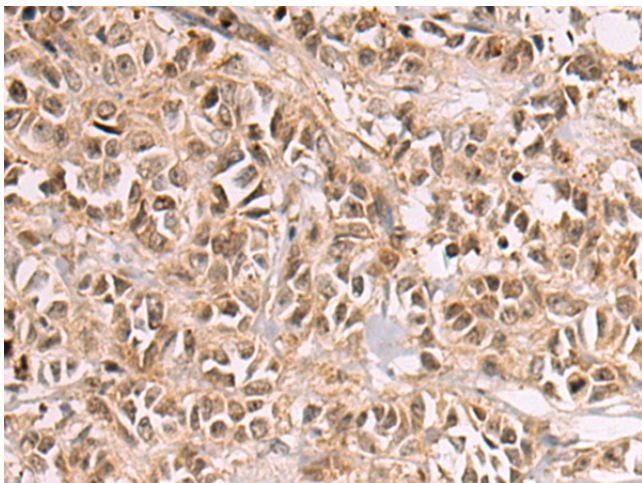
Product Type:	Primary Antibodies
Applications:	IHC
Recommended Dilution:	IHC: 50-100 Positive control: Human breast cancer Predicted cell location: Cytoplasm and Nucleus
Reactivity:	Human, Mouse, Rat
Host:	Rabbit
Isotype:	IgG
Clonality:	Polyclonal
Immunogen:	Synthetic peptide of human ESRP1
Formulation:	pH7.4 PBS, 0.05% NaN <sub>3</sub> , 40% Glycerol
Concentration:	lot specific
Purification:	Antigen affinity purification
Conjugation:	Unconjugated
Storage:	Store at -20°C.
Stability:	1 year
Gene Name:	epithelial splicing regulatory protein 1
Database Link:	<a href="#">Entrez Gene 54845 Human Q6NXG1</a>
Background:	ESRP1 is an epithelial cell-type-specific splicing regulator (Warzecha et al., 2009 [PubMed 19285943]). mRNA splicing factor that regulates the formation of epithelial cell-specific isoforms. Specifically regulates the expression of FGFR2-IIIb, an epithelial cell-specific isoform of FGFR2. Also regulates the splicing of CD44, CTNND1, ENAH, 3 transcripts that undergo changes in splicing during the epithelial-to-mesenchymal transition (EMT). Acts by directly binding specific sequences in mRNAs. Binds the GU-rich sequence motifs in the ISE/ISS-3, a cis-element regulatory region present in the mRNA of FGFR2 (PubMed:19285943). Regulates splicing and expression of genes involved in inner ear development, auditory hair cell differentiation, and cell fate specification in the cochlear epithelium (By similarity).



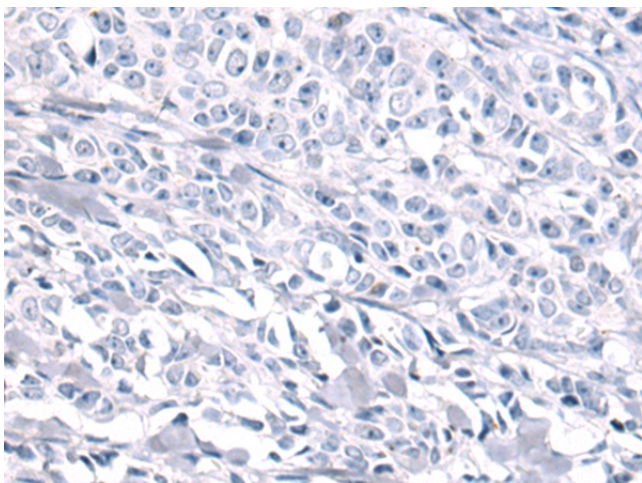
[View online »](#)

Synonyms: FLJ20171; RBM35A; RMB35A

### Product images:



Immunohistochemistry of paraffin-embedded Human breast cancer tissue using TA372872 (ESRP1 Antibody) at dilution 1/60 (Original magnification: ×200)



Immunohistochemistry of paraffin-embedded Human breast cancer tissue using TA372872 (ESRP1 Antibody) at dilution 1/60, treated with synthetic peptide. (Original magnification: ×200)