

Product datasheet for **TA372870S**

Topoisomerase I (TOP1) Rabbit Polyclonal Antibody

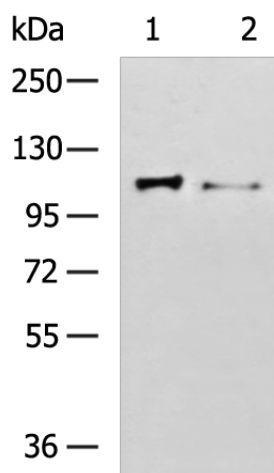
Product data:

Product Type:	Primary Antibodies
Applications:	IHC, WB
Recommended Dilution:	WB: 500-2000 WB positive control: 231 and K562 cell lysates IHC: 50-100 Positive control: Human gastric cancer Predicted cell location: Nucleus
Reactivity:	Human, Mouse, Rat
Host:	Rabbit
Isotype:	IgG
Clonality:	Polyclonal
Immunogen:	Synthetic peptide of human TOP1
Formulation:	pH7.4 PBS, 0.05% NaN ₃ , 40% Glycerol
Concentration:	lot specific
Purification:	Antigen affinity purification
Conjugation:	Unconjugated
Storage:	Store at -20°C.
Stability:	1 year
Predicted Protein Size:	91 kDa
Gene Name:	topoisomerase (DNA) I
Database Link:	Entrez Gene 7150 Human P11387
Background:	This gene encodes a DNA topoisomerase, an enzyme that controls and alters the topologic states of DNA during transcription. This enzyme catalyzes the transient breaking and rejoining of a single strand of DNA which allows the strands to pass through one another, thus altering the topology of DNA. This gene is localized to chromosome 20 and has pseudogenes which reside on chromosomes 1 and 22.
Synonyms:	TOPI

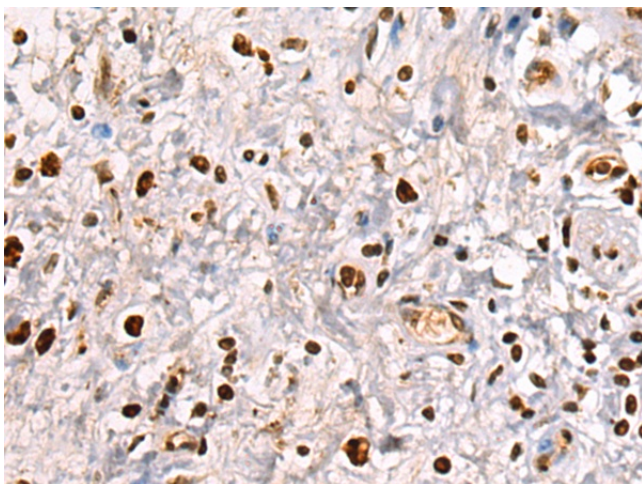


[View online »](#)

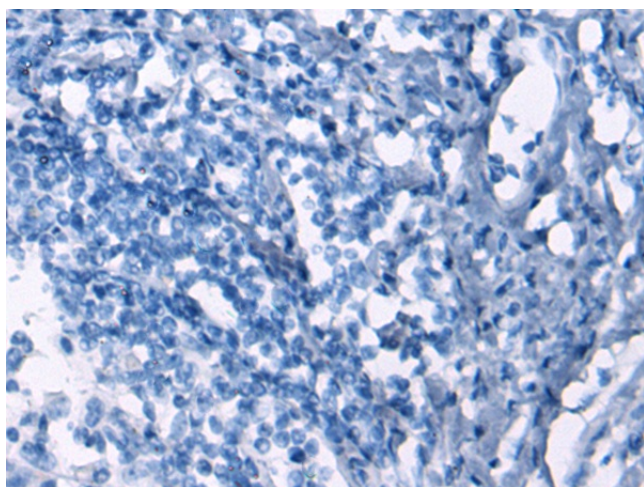
Product images:



Gel: 6%SDS-PAGE
Lysate: 40 µg
Lane 1-2: 231 and K562 cell lysates
Primary antibody: [TA372870] (TOP1 Antibody) at dilution 1/900
Secondary antibody: Goat anti rabbit IgG at 1/5000 dilution
Exposure time: 2 minutes



Immunohistochemistry of paraffin-embedded Human gastric cancer tissue using [TA372870] (TOP1 Antibody) at dilution 1/35 (Original magnification: ×200)



Immunohistochemistry of paraffin-embedded Human gastric cancer tissue using [TA372870] (TOP1 Antibody) at dilution 1/35, treated with synthetic peptide. (Original magnification: ×200)