

Product datasheet for **TA372869**

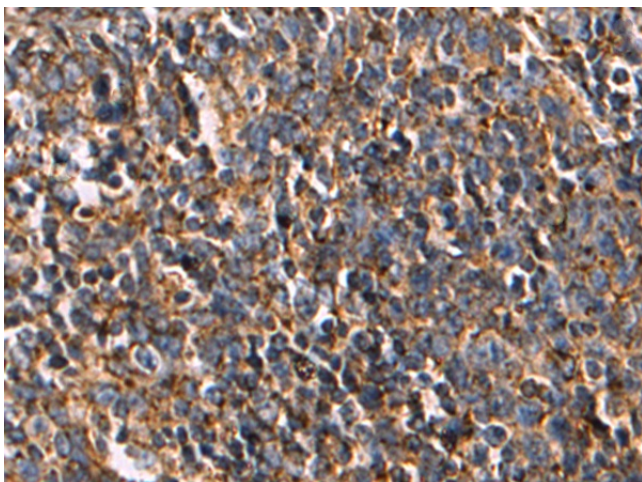
LAMP1 Rabbit Polyclonal Antibody

Product data:

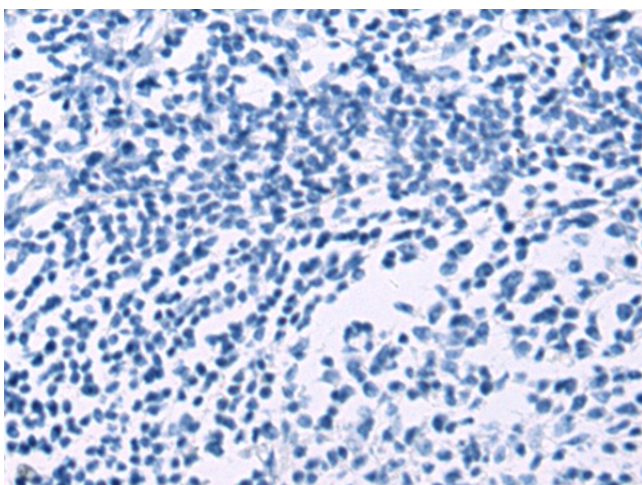
| | |
|-----------------------|---|
| Product Type: | Primary Antibodies |
| Applications: | IHC |
| Recommended Dilution: | IHC: 50-200 Positive control: Human tonsil Predicted cell location: Cytoplasm |
| Reactivity: | Human |
| Host: | Rabbit |
| Isotype: | IgG |
| Clonality: | Polyclonal |
| Immunogen: | Synthetic peptide of human LAMP1 |
| Formulation: | pH7.4 PBS, 0.05% NaN ₃ , 40% Glycerol |
| Concentration: | lot specific |
| Purification: | Antigen affinity purification |
| Conjugation: | Unconjugated |
| Storage: | Store at -20°C. |
| Stability: | 1 year |
| Gene Name: | lysosomal associated membrane protein 1 |
| Database Link: | Entrez Gene 3916 Human P11279 |
| Background: | The protein encoded by this gene is a member of a family of membrane glycoproteins. This glycoprotein provides selectins with carbohydrate ligands. It may also play a role in tumor cell metastasis. |
| Synonyms: | CD107a; LAMP-1; LAMPA; LGP120 |



[View online »](#)

Product images:

Immunohistochemistry of paraffin-embedded Human tonsil tissue using TA372869 (LAMP1 Antibody) at dilution 1/80 (Original magnification: ×200)



Immunohistochemistry of paraffin-embedded Human tonsil tissue using TA372869 (LAMP1 Antibody) at dilution 1/80, treated with synthetic peptide. (Original magnification: ×200)