

Product datasheet for **TA372844S**

KCNK2 Rabbit Polyclonal Antibody

Product data:

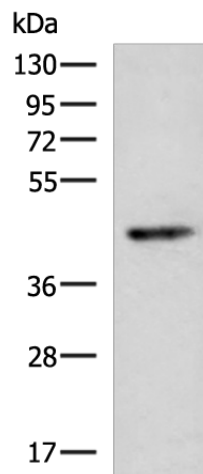
| | |
|-------------------------|---|
| Product Type: | Primary Antibodies |
| Applications: | IHC, WB |
| Recommended Dilution: | WB: 200-1000 WB positive control: Human cerebrum tissue lysate IHC: 30-150 Positive control: Human tonsil Predicted cell location: Cytoplasm |
| Reactivity: | Human, Mouse, Rat |
| Host: | Rabbit |
| Isotype: | IgG |
| Clonality: | Polyclonal |
| Immunogen: | Synthetic peptide of human KCNK2 |
| Formulation: | pH7.4 PBS, 0.05% NaN ₃ , 40% Glycerol |
| Concentration: | lot specific |
| Purification: | Antigen affinity purification |
| Conjugation: | Unconjugated |
| Storage: | Store at -20°C. |
| Stability: | 1 year |
| Predicted Protein Size: | 47 kDa |
| Gene Name: | potassium two pore domain channel subfamily K member 2 |
| Database Link: | Entrez Gene 3776 Human O95069 |
| Background: | This gene encodes one of the members of the two-pore-domain background potassium channel protein family. This type of potassium channel is formed by two homodimers that create a channel that leaks potassium out of the cell to control resting membrane potential. The channel can be opened, however, by certain anesthetics, membrane stretching, intracellular acidosis, and heat. Three transcript variants encoding different isoforms have been found for this gene. |



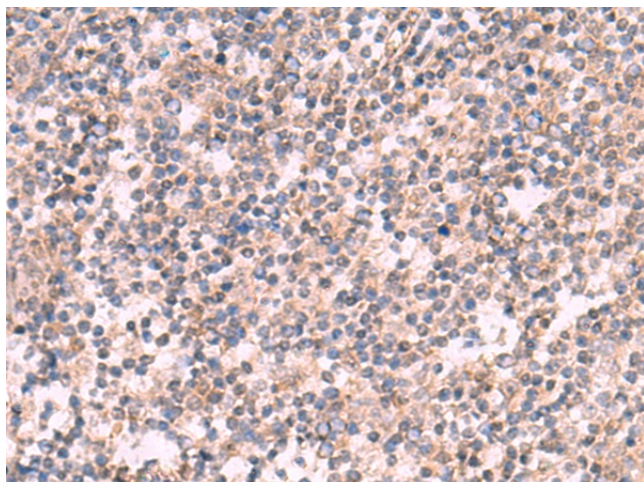
[View online »](#)

Synonyms: hTREK-1c; hTREK-1e; K2p2.1; MGC126742; MGC126744; TPKC1; TREK; TREK-1; TREK1

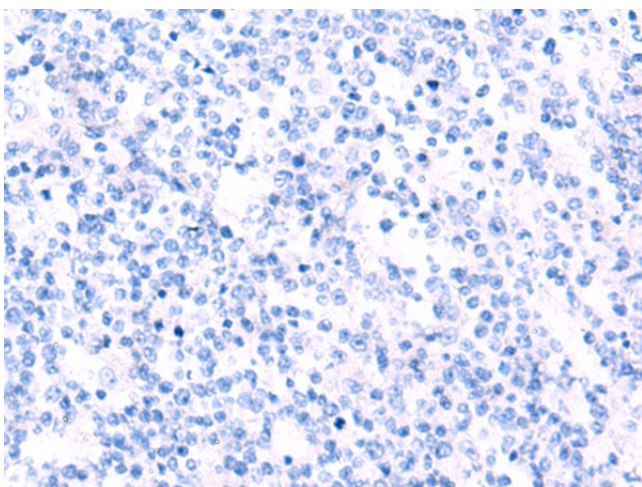
Product images:



Gel: 8%SDS-PAGE
Lysate: 40 μ g
Lane: Human cerebrum tissue lysate
Primary antibody: [TA372844] (KCNK2 Antibody) at dilution 1/200
Secondary antibody: Goat anti rabbit IgG at 1/5000 dilution
Exposure time: 1 minute



Immunohistochemistry of paraffin-embedded Human tonsil tissue using [TA372844] (KCNK2 Antibody) at dilution 1/30 (Original magnification: \times 200)



Immunohistochemistry of paraffin-embedded Human tonsil tissue using [TA372844] (KCNK2 Antibody) at dilution 1/30, treated with synthetic peptide. (Original magnification: $\times 200$)