

## Product datasheet for **TA372839S**

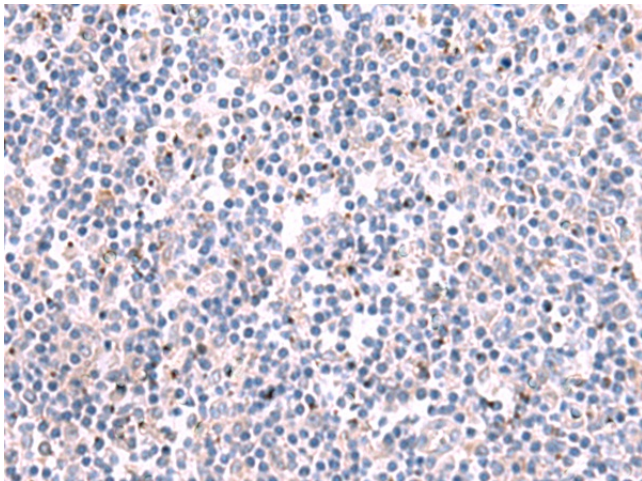
### KCNK10 Rabbit Polyclonal Antibody

#### Product data:

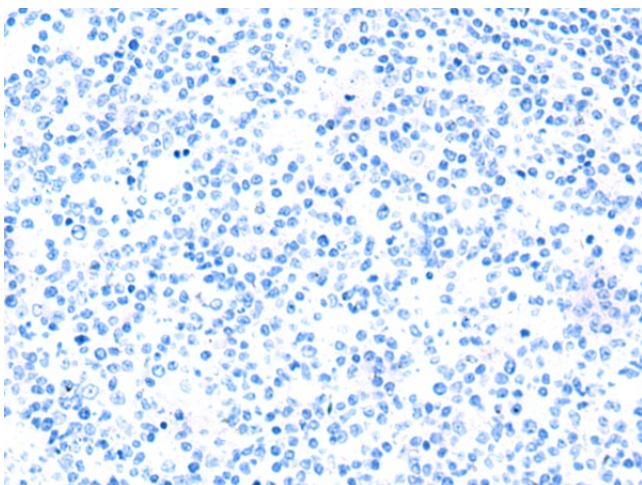
Product Type:	Primary Antibodies
Applications:	IHC
Recommended Dilution:	IHC: 30-150 Positive control: Human tonsil Predicted cell location: Cytoplasm
Reactivity:	Human, Rat
Host:	Rabbit
Isotype:	IgG
Clonality:	Polyclonal
Immunogen:	Synthetic peptide of human KCNK10
Formulation:	pH7.4 PBS, 0.05% NaN <sub>3</sub> , 40% Glycerol
Concentration:	lot specific
Purification:	Antigen affinity purification
Conjugation:	Unconjugated
Storage:	Store at -20°C.
Stability:	1 year
Gene Name:	potassium two pore domain channel subfamily K member 10
Database Link:	<a href="#">Entrez Gene 54207 Human P57789</a>
Background:	The protein encoded by this gene belongs to the family of potassium channel proteins containing two pore-forming P domains. This channel is an open rectifier which primarily passes outward current under physiological K <sup>+</sup> concentrations, and is stimulated strongly by arachidonic acid and to a lesser degree by membrane stretching, intracellular acidification, and general anaesthetics. Several alternatively spliced transcript variants encoding different isoforms have been identified for this gene.
Synonyms:	FLJ43399; K2p10.1; TREK-2; TREK2



[View online »](#)

**Product images:**

Immunohistochemistry of paraffin-embedded Human tonsil tissue using [TA372839] (KCNK10 Antibody) at dilution 1/35 (Original magnification: ×200)



Immunohistochemistry of paraffin-embedded Human tonsil tissue using [TA372839] (KCNK10 Antibody) at dilution 1/35, treated with synthetic peptide. (Original magnification: ×200)