

Product datasheet for **TA372837S**

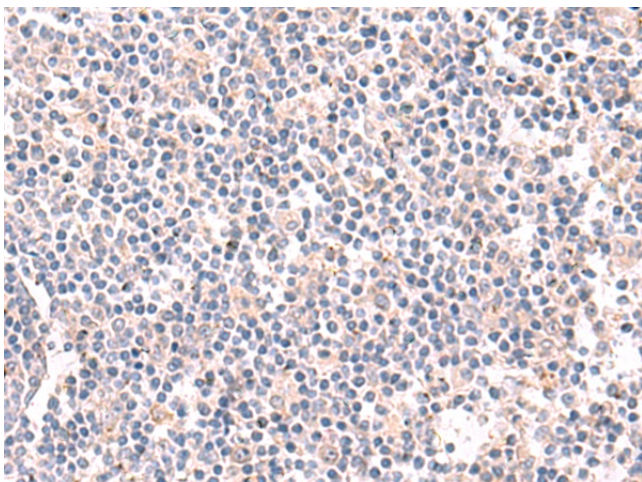
KCC4 (SLC12A7) Rabbit Polyclonal Antibody

Product data:

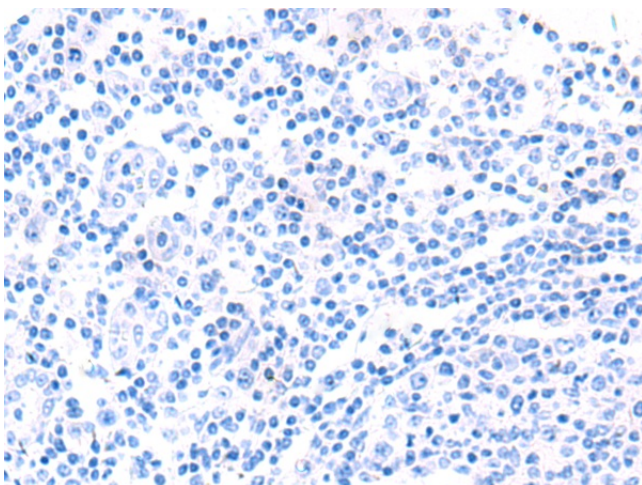
Product Type:	Primary Antibodies
Applications:	IHC
Recommended Dilution:	IHC: 25-100 Positive control: Human tonsil Predicted cell location: Cytoplasm
Reactivity:	Human
Host:	Rabbit
Isotype:	IgG
Clonality:	Polyclonal
Immunogen:	Synthetic peptide of human SLC12A7
Formulation:	pH7.4 PBS, 0.05% NaN ₃ , 40% Glycerol
Concentration:	lot specific
Purification:	Antigen affinity purification
Conjugation:	Unconjugated
Storage:	Store at -20°C.
Stability:	1 year
Gene Name:	solute carrier family 12 member 7
Database Link:	Entrez Gene 10723 Human Q9Y666
Background:	Mediates electroneutral potassium-chloride cotransport when activated by cell swelling. May mediate K ⁺ uptake into Deiters' cells in the cochlea and contribute to K ⁺ -recycling in the inner ear. Important for the survival of cochlear outer and inner hair cells and the maintenance of the organ of Corti. May be required for basolateral Cl ⁻ -extrusion in the kidney and contribute to renal acidification (By similarity).
Synonyms:	DKFZP434F076; KCC4



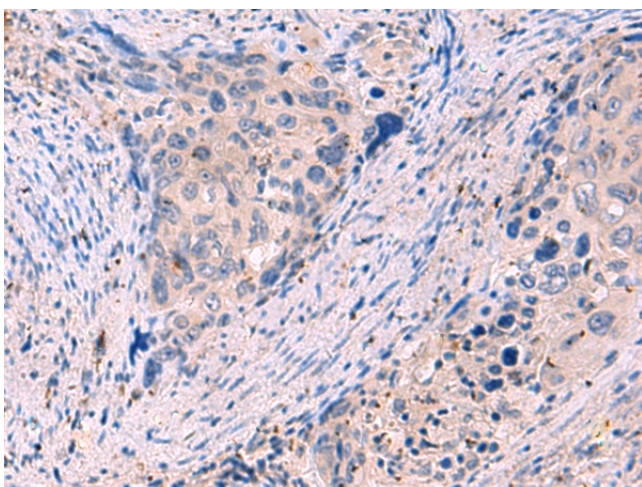
[View online »](#)

Product images:

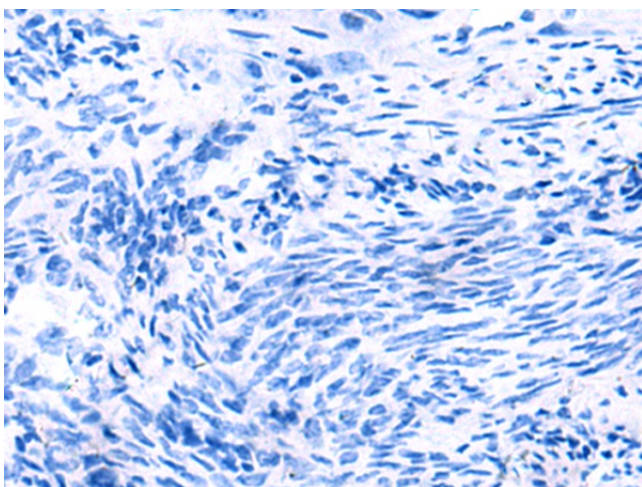
Immunohistochemistry of paraffin-embedded Human tonsil tissue using [TA372837] (SLC12A7 Antibody) at dilution 1/35 (Original magnification: ×200)



Immunohistochemistry of paraffin-embedded Human tonsil tissue using [TA372837] (SLC12A7 Antibody) at dilution 1/35, treated with synthetic peptide. (Original magnification: ×200)



Immunohistochemistry of paraffin-embedded Human cervical cancer tissue using [TA372837] (SLC12A7 Antibody) at dilution 1/35 (Original magnification: $\times 200$)



Immunohistochemistry of paraffin-embedded Human cervical cancer tissue using [TA372837] (SLC12A7 Antibody) at dilution 1/35, treated with synthetic peptide. (Original magnification: $\times 200$)