

## Product datasheet for **TA372820S**

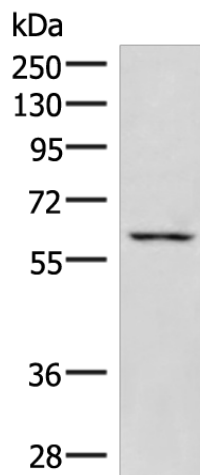
### JRKL Rabbit Polyclonal Antibody

#### Product data:

|                         |   |
|-------------------------|---|
| Product Type:           | Primary Antibodies  |
| Applications:           | WB  |
| Recommended Dilution:   | WB: 500-2000<br>WB positive control: K562 cell lysate   |
| Reactivity:             | Human, Mouse  |
| Host:                   | Rabbit  |
| Isotype:                | IgG   |
| Clonality:              | Polyclonal  |
| Immunogen:              | Synthetic peptide of human JRKL   |
| Formulation:            | pH7.4 PBS, 0.05% NaN <sub>3</sub> , 40% Glycerol  |
| Concentration:          | lot specific  |
| Purification:           | Antigen affinity purification   |
| Conjugation:            | Unconjugated  |
| Storage:                | Store at -20°C.   |
| Stability:              | 1 year  |
| Predicted Protein Size: | 60 kDa  |
| Gene Name:              | JRK-like  |
| Database Link:          | <a href="#">Entrez Gene 8690 Human Q9Y4A0</a>   |
| Background:             | The function of this gene has not yet been defined, however, the encoded protein shares similarity with the human (41% identical) and mouse (34% identical) jerky gene products. This protein may act as a nuclear regulatory protein. Alternatively spliced transcript variants have been found for this gene. |
| Synonyms:               | HHMJG; MGC129608; OTTHUMP00000207000  |

[View online »](#)

## Product images:



Gel: 8%SDS-PAGE

Lysate: 40 µg

Lane: K562 cell lysate

Primary antibody: [TA372820] (JRKL Antibody) at dilution 1/1000

Secondary antibody: Goat anti rabbit IgG at 1/5000 dilution

Exposure time: 7 minutes