

## Product datasheet for TA372820

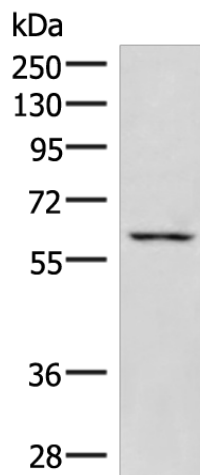
### JRKL Rabbit Polyclonal Antibody

#### Product data:

Product Type:	Primary Antibodies
Applications:	WB
Recommended Dilution:	WB: 500-2000 WB positive control: K562 cell lysate
Reactivity:	Human, Mouse
Host:	Rabbit
Isotype:	IgG
Clonality:	Polyclonal
Immunogen:	Synthetic peptide of human JRKL
Formulation:	pH7.4 PBS, 0.05% NaN <sub>3</sub> , 40% Glycerol
Concentration:	lot specific
Purification:	Antigen affinity purification
Conjugation:	Unconjugated
Storage:	Store at -20°C.
Stability:	1 year
Predicted Protein Size:	60 kDa
Gene Name:	JRK-like
Database Link:	<a href="#">Entrez Gene 8690 Human Q9Y4A0</a>
Background:	The function of this gene has not yet been defined, however, the encoded protein shares similarity with the human (41% identical) and mouse (34% identical) jerky gene products. This protein may act as a nuclear regulatory protein. Alternatively spliced transcript variants have been found for this gene.
Synonyms:	HHMJG; MGC129608; OTTHUMP00000207000


[View online »](#)

## Product images:



Gel: 8%SDS-PAGE  
 Lysate: 40 µg  
 Lane: K562 cell lysate  
 Primary antibody: TA372820 (JRKL Antibody) at dilution 1/1000  
 Secondary antibody: Goat anti rabbit IgG at 1/5000 dilution  
 Exposure time: 7 minutes