

Product datasheet for **TA372814**

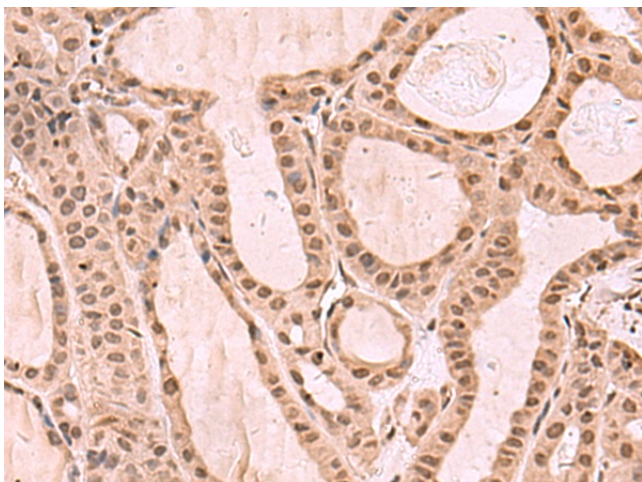
JHDM1D (KDM7A) Rabbit Polyclonal Antibody

Product data:

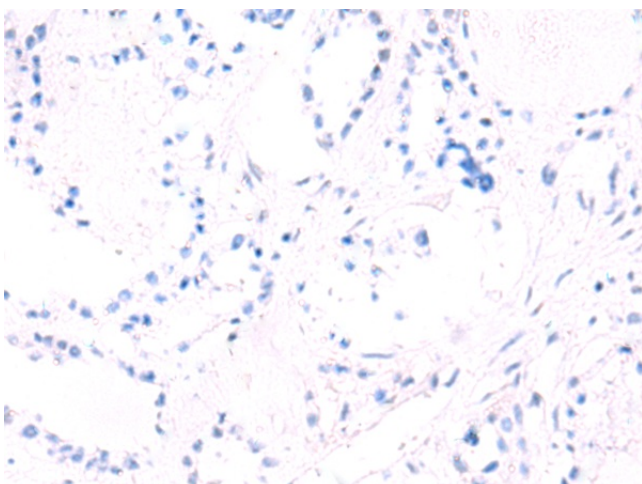
Product Type:	Primary Antibodies
Applications:	IHC
Recommended Dilution:	IHC: 30-150 Positive control: Human thyroid cancer Predicted cell location: Cytoplasm and Nucleus
Reactivity:	Human, Mouse
Host:	Rabbit
Isotype:	IgG
Clonality:	Polyclonal
Immunogen:	Synthetic peptide of human KDM7A
Formulation:	pH7.4 PBS, 0.05% NaN ₃ , 40% Glycerol
Concentration:	lot specific
Purification:	Antigen affinity purification
Conjugation:	Unconjugated
Storage:	Store at -20°C.
Stability:	1 year
Gene Name:	lysine demethylase 7A
Database Link:	Entrez Gene 80853 Human Q6ZMT4
Background:	Histone demethylase required for brain development. Specifically demethylates dimethylated 'Lys-9' and 'Lys-27' (H3K9me ₂ and H3K27me ₂ , respectively) of histone H3 and monomethylated histone H4 'Lys-20' residue (H4K20Me ₁), thereby playing a central role in histone code. Specifically binds trimethylated 'Lys-4' of histone H3 (H3K4me ₃), affecting histone demethylase specificity: in presence of H3K4me ₃ , it has no demethylase activity toward H3K9me ₂ , while it has high activity toward H3K27me ₂ . Demethylates H3K9me ₂ in absence of H3K4me ₃ . Has activity toward H4K20Me ₁ only when nucleosome is used as a substrate and when not histone octamer is used as substrate.



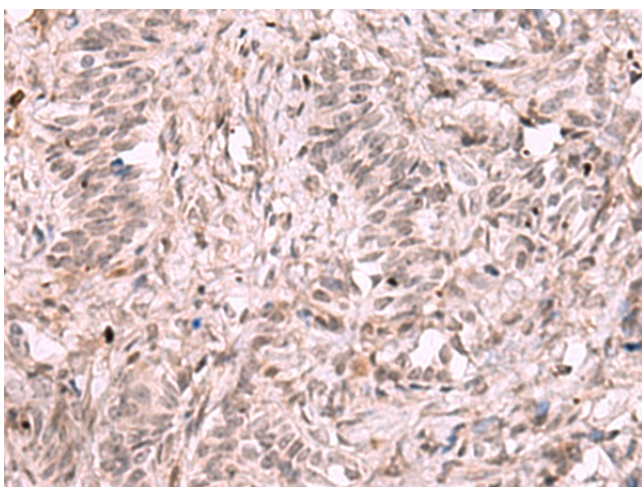
[View online »](#)

Product images:

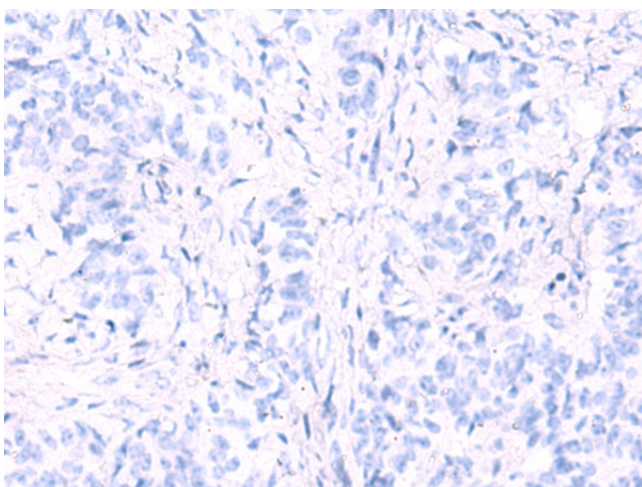
Immunohistochemistry of paraffin-embedded Human thyroid cancer tissue using TA372814 (KDM7A Antibody) at dilution 1/35 (Original magnification: $\times 200$)



Immunohistochemistry of paraffin-embedded Human thyroid cancer tissue using TA372814 (KDM7A Antibody) at dilution 1/35, treated with synthetic peptide. (Original magnification: $\times 200$)



Immunohistochemistry of paraffin-embedded Human ovarian cancer tissue using TA372814 (KDM7A Antibody) at dilution 1/35 (Original magnification: $\times 200$)



Immunohistochemistry of paraffin-embedded Human ovarian cancer tissue using TA372814 (KDM7A Antibody) at dilution 1/35, treated with synthetic peptide. (Original magnification: $\times 200$)