

Product datasheet for **TA372806S**

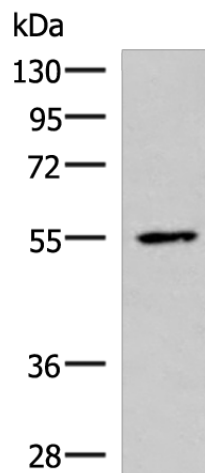
ISM1 Rabbit Polyclonal Antibody

Product data:

Product Type:	Primary Antibodies
Applications:	IHC, WB
Recommended Dilution:	WB: 1000-5000 WB positive control: HepG2 cell lysate IHC: 40-200 Positive control: Human tonsil Predicted cell location: Secreted
Reactivity:	Human, Mouse
Host:	Rabbit
Isotype:	IgG
Clonality:	Polyclonal
Immunogen:	Synthetic peptide of human ISM1
Formulation:	pH7.4 PBS, 0.05% NaN ₃ , 40% Glycerol
Concentration:	lot specific
Purification:	Antigen affinity purification
Conjugation:	Unconjugated
Storage:	Store at -20°C.
Stability:	1 year
Predicted Protein Size:	52 kDa
Gene Name:	isthmin 1, angiogenesis inhibitor
Database Link:	Entrez Gene 140862 Human B1AKI9
Background:	Acts as an angiogenesis inhibitor.
Synonyms:	bA149118.1; C20orf82; dj107712.1; ISM; Isthmin



[View online »](#)

Product images:

Gel: 8%SDS-PAGE

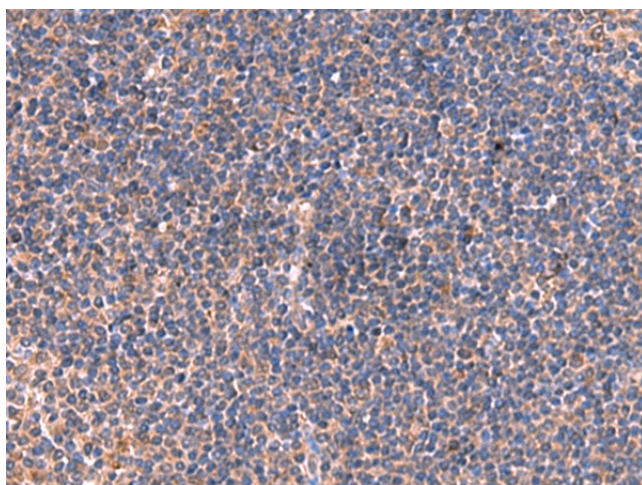
Lysate: 40 μ g

Lane: HepG2 cell lysate

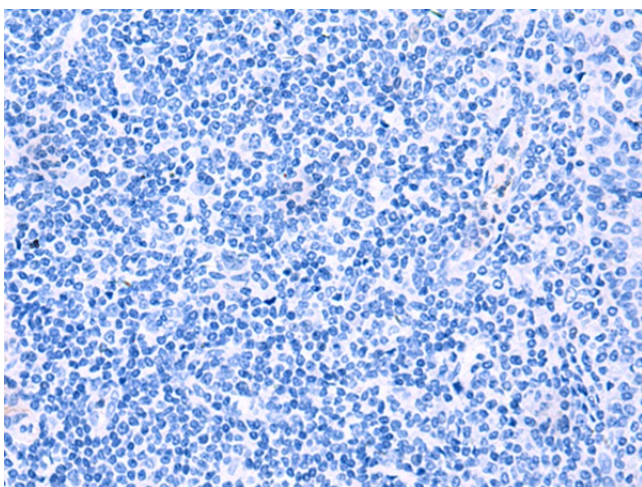
Primary antibody: [TA372806] (ISM1 Antibody) at dilution 1/1000

Secondary antibody: Goat anti rabbit IgG at 1/5000 dilution

Exposure time: 20 seconds



Immunohistochemistry of paraffin-embedded Human tonsil tissue using [TA372806] (ISM1 Antibody) at dilution 1/40 (Original magnification: \times 200)



Immunohistochemistry of paraffin-embedded Human tonsil tissue using [TA372806] (ISM1 Antibody) at dilution 1/40, treated with synthetic peptide. (Original magnification: $\times 200$)