

## Product datasheet for **TA372804S**

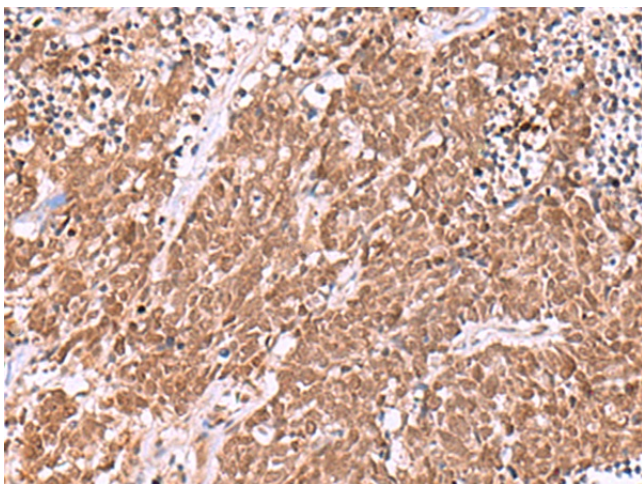
### IRX6 Rabbit Polyclonal Antibody

#### Product data:

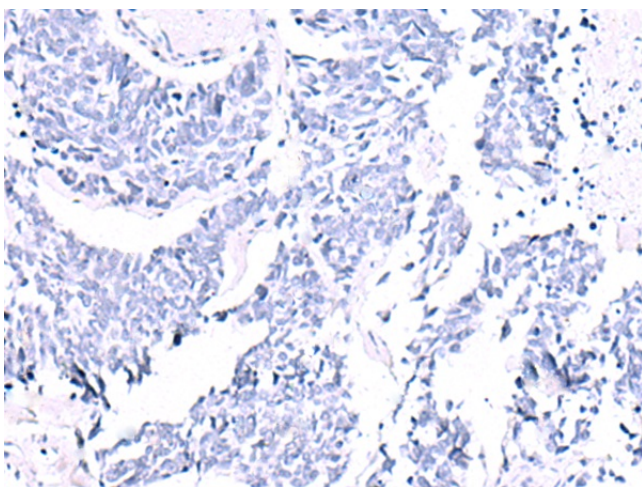
Product Type:	Primary Antibodies
Applications:	IHC
Recommended Dilution:	IHC: 20-100 Positive control: Human lung cancer Predicted cell location: Nucleus
Reactivity:	Human
Host:	Rabbit
Isotype:	IgG
Clonality:	Polyclonal
Immunogen:	Synthetic peptide of human IRX6
Formulation:	pH7.4 PBS, 0.05% NaN <sub>3</sub> , 40% Glycerol
Concentration:	lot specific
Purification:	Antigen affinity purification
Conjugation:	Unconjugated
Storage:	Store at -20°C.
Stability:	1 year
Gene Name:	iroquois homeobox 6
Database Link:	<a href="#">Entrez Gene 79190 Human P78412</a>
Background:	IRX6 is one Iroquois (Irx) proteins comprise a family of homeodomain-containing transcription factors involved in patterning and regionalization of embryonic tissues in both vertebrates and invertebrates.
Synonyms:	IRX-3; IRX7; IRXB3



[View online »](#)

**Product images:**

Immunohistochemistry of paraffin-embedded Human lung cancer tissue using [TA372804] (IRX6 Antibody) at dilution 1/20 (Original magnification: ×200)



Immunohistochemistry of paraffin-embedded Human lung cancer tissue using [TA372804] (IRX6 Antibody) at dilution 1/20, treated with synthetic peptide. (Original magnification: ×200)