

Product datasheet for **TA372799S**

Iroquois homeobox protein 3 (IRX3) Rabbit Polyclonal Antibody

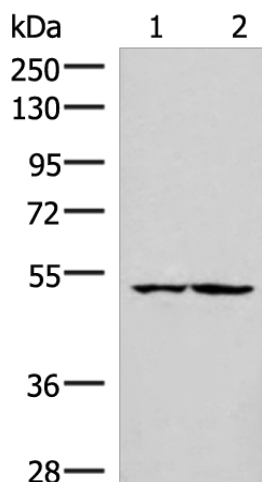
Product data:

Product Type:	Primary Antibodies
Applications:	IHC, WB
Recommended Dilution:	WB: 300-1000 WB positive control: HepG2 and Jurkat cell lysates IHC: 25-100 Positive control: Human esophagus cancer Predicted cell location: Nucleus
Reactivity:	Human, Mouse
Host:	Rabbit
Isotype:	IgG
Clonality:	Polyclonal
Immunogen:	Synthetic peptide of human IRX3
Formulation:	pH7.4 PBS, 0.05% NaN ₃ , 40% Glycerol
Concentration:	lot specific
Purification:	Antigen affinity purification
Conjugation:	Unconjugated
Storage:	Store at -20°C.
Stability:	1 year
Predicted Protein Size:	52 kDa
Gene Name:	iroquois homeobox 3
Database Link:	Entrez Gene 79191 Human P78415
Background:	IRX3 is a member of the Iroquois homeobox gene family and plays a role in an early step of neural development. Members of this family appear to play multiple roles during pattern formation of vertebrate embryos.
Synonyms:	FLJ99187; IRX-1; IRXB1

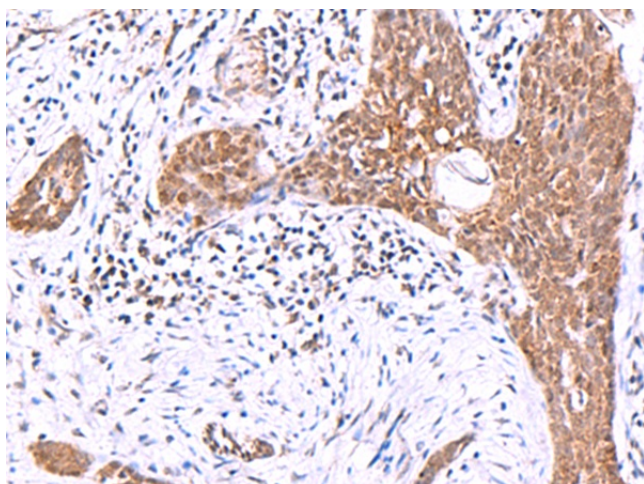


[View online »](#)

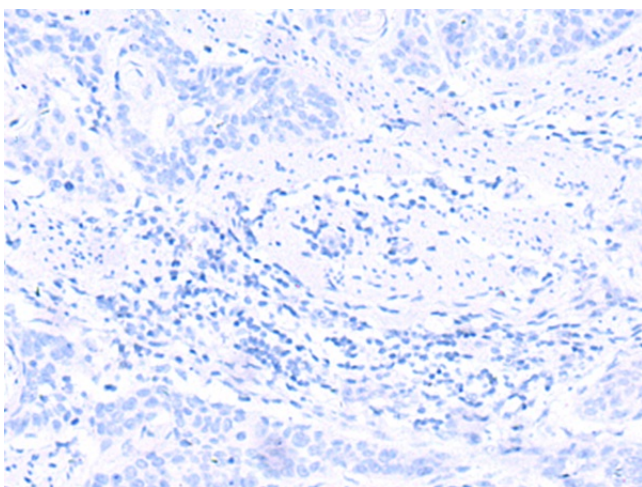
Product images:



Gel: 8%SDS-PAGE
Lysate: 40 μ g
Lane 1-2: HepG2 and Jurkat cell lysates
Primary antibody: [TA372799] (IRX3 Antibody) at dilution 1/300
Secondary antibody: Goat anti rabbit IgG at 1/8000 dilution
Exposure time: 30 seconds



Immunohistochemistry of paraffin-embedded Human esophagus cancer tissue using [TA372799] (IRX3 Antibody) at dilution 1/30 (Original magnification: $\times 200$)



Immunohistochemistry of paraffin-embedded Human esophagus cancer tissue using [TA372799] (IRX3 Antibody) at dilution 1/30, treated with synthetic peptide. (Original magnification: $\times 200$)