

Product datasheet for **TA372797S**

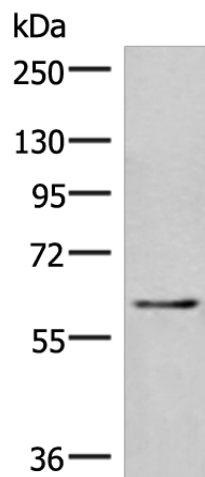
IRF2BP2 Rabbit Polyclonal Antibody

Product data:

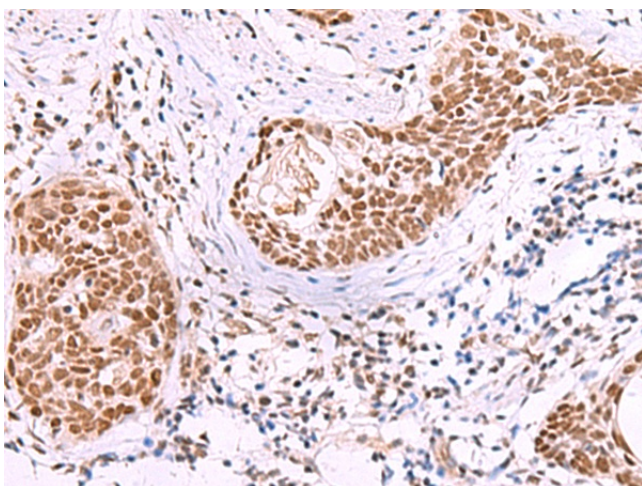
Product Type:	Primary Antibodies
Applications:	IHC, WB
Recommended Dilution:	WB: 200-1000 WB positive control: 293T cell lysate IHC: 40-200 Positive control: Human esophagus cancer Predicted cell location: Nucleus
Reactivity:	Human, Mouse
Host:	Rabbit
Isotype:	IgG
Clonality:	Polyclonal
Immunogen:	Synthetic peptide of human IRF2BP2
Formulation:	pH7.4 PBS, 0.05% NaN ₃ , 40% Glycerol
Concentration:	lot specific
Purification:	Antigen affinity purification
Conjugation:	Unconjugated
Storage:	Store at -20°C.
Stability:	1 year
Predicted Protein Size:	61 kDa
Gene Name:	interferon regulatory factor 2 binding protein 2
Database Link:	Entrez Gene 359948 Human Q7Z5L9
Background:	This gene encodes an interferon regulatory factor-2 (IRF2) binding protein that interacts with the C-terminal transcriptional repression domain of IRF2. Alternative splicing results in multiple transcript variants encoding distinct isoforms.
Synonyms:	IRF-2BP2; MGC72189



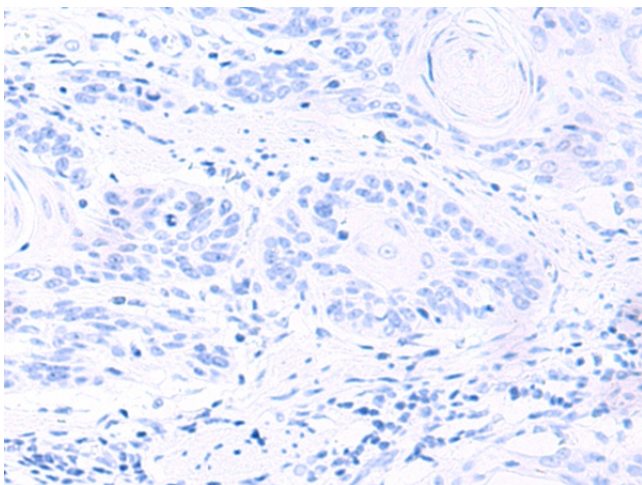
[View online »](#)

Product images:


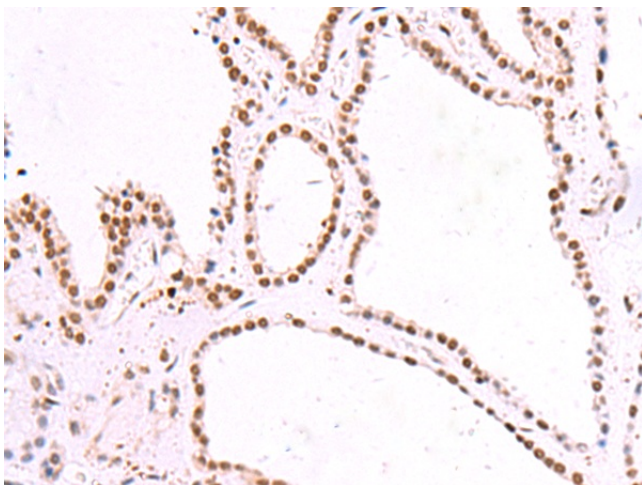
Gel: 8%SDS-PAGE
 Lysate: 40 µg
 Lane: 293T cell lysate
 Primary antibody: [TA372797] (IRF2BP2 Antibody)
 at dilution 1/400
 Secondary antibody: Goat anti rabbit IgG at
 1/8000 dilution
 Exposure time: 40 seconds



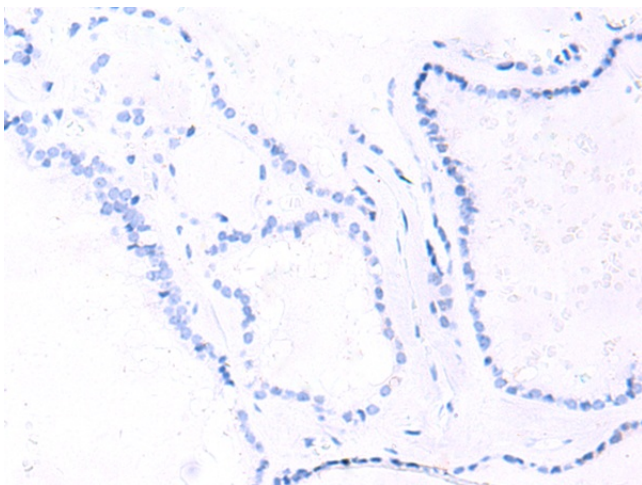
Immunohistochemistry of paraffin-embedded
 Human esophagus cancer tissue using
 [TA372797] (IRF2BP2 Antibody) at dilution 1/40
 (Original magnification: ×200)



Immunohistochemistry of paraffin-embedded Human esophagus cancer tissue using [TA372797] (IRF2BP2 Antibody) at dilution 1/40, treated with synthetic peptide. (Original magnification: ×200)



Immunohistochemistry of paraffin-embedded Human thyroid cancer tissue using [TA372797] (IRF2BP2 Antibody) at dilution 1/40 (Original magnification: ×200)



Immunohistochemistry of paraffin-embedded Human thyroid cancer tissue using [TA372797] (IRF2BP2 Antibody) at dilution 1/40, treated with synthetic peptide. (Original magnification: ×200)