

## Product datasheet for **TA372794S**

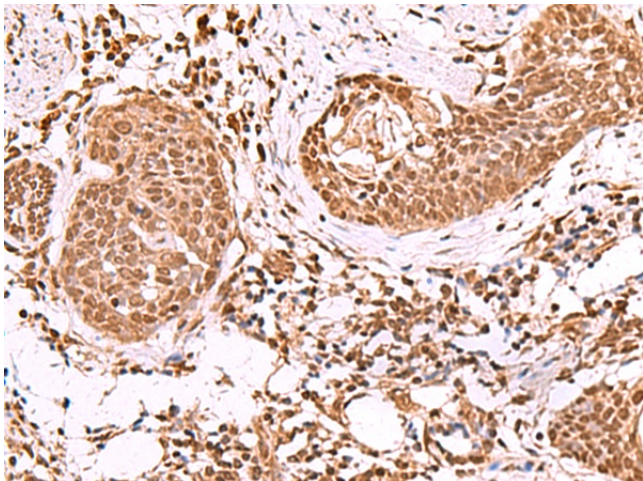
### IP6K1 Rabbit Polyclonal Antibody

#### Product data:

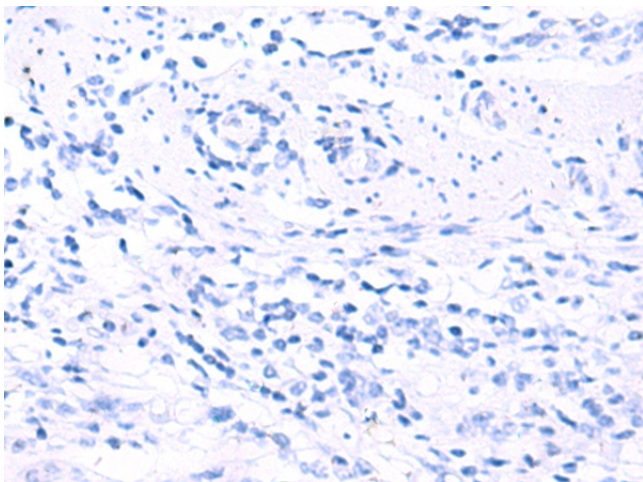
|                       |   |
|-----------------------|---|
| Product Type:         | Primary Antibodies  |
| Applications:         | IHC   |
| Recommended Dilution: | IHC: 50-300<br>Positive control: Human esophagus cancer<br>Predicted cell location: Nucleus   |
| Reactivity:           | Human, Mouse, Rat   |
| Host:                 | Rabbit  |
| Isotype:              | IgG   |
| Clonality:            | Polyclonal  |
| Immunogen:            | Synthetic peptide of human IP6K1  |
| Formulation:          | pH7.4 PBS, 0.05% NaN <sub>3</sub> , 40% Glycerol  |
| Concentration:        | lot specific  |
| Purification:         | Antigen affinity purification   |
| Conjugation:          | Unconjugated  |
| Storage:              | Store at -20°C.   |
| Stability:            | 1 year  |
| Gene Name:            | inositol hexakisphosphate kinase 1  |
| Database Link:        | <a href="#">Entrez Gene 9807 Human Q92551</a>   |
| Background:           | This gene encodes a member of the inositol phosphokinase family. The encoded protein may be responsible for the conversion of inositol hexakisphosphate (InsP <sub>6</sub> ) to diphosphoinositol pentakisphosphate (InsP <sub>7</sub> /PP-InsP <sub>5</sub> ). It may also convert 1,3,4,5,6-pentakisphosphate (InsP <sub>5</sub> ) to PP-InsP <sub>4</sub> . Alternatively spliced transcript variants have been described. |
| Synonyms:             | IHPK1; KIAA0263; MGC9925; PIUS  |



[View online »](#)

**Product images:**

Immunohistochemistry of paraffin-embedded Human esophagus cancer tissue using [TA372794] (IP6K1 Antibody) at dilution 1/55 (Original magnification:  $\times 200$ )



Immunohistochemistry of paraffin-embedded Human esophagus cancer tissue using [TA372794] (IP6K1 Antibody) at dilution 1/55, treated with synthetic peptide. (Original magnification:  $\times 200$ )