

## Product datasheet for **TA372794**

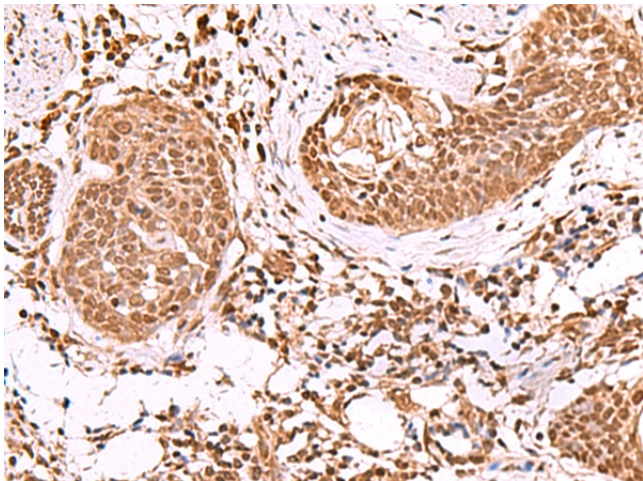
### IP6K1 Rabbit Polyclonal Antibody

#### Product data:

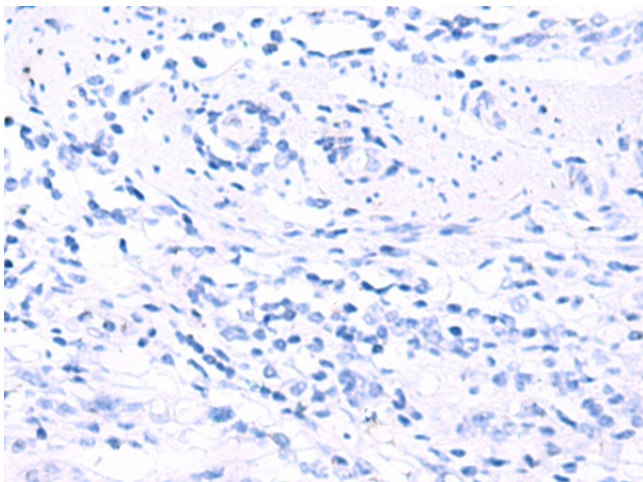
Product Type:	Primary Antibodies
Applications:	IHC
Recommended Dilution:	IHC: 50-300 Positive control: Human esophagus cancer Predicted cell location: Nucleus
Reactivity:	Human, Mouse, Rat
Host:	Rabbit
Isotype:	IgG
Clonality:	Polyclonal
Immunogen:	Synthetic peptide of human IP6K1
Formulation:	pH7.4 PBS, 0.05% NaN <sub>3</sub> , 40% Glycerol
Concentration:	lot specific
Purification:	Antigen affinity purification
Conjugation:	Unconjugated
Storage:	Store at -20°C.
Stability:	1 year
Gene Name:	inositol hexakisphosphate kinase 1
Database Link:	<a href="#">Entrez Gene 9807 Human Q92551</a>
Background:	This gene encodes a member of the inositol phosphokinase family. The encoded protein may be responsible for the conversion of inositol hexakisphosphate (InsP <sub>6</sub> ) to diphosphoinositol pentakisphosphate (InsP <sub>7</sub> /PP-InsP <sub>5</sub> ). It may also convert 1,3,4,5,6-pentakisphosphate (InsP <sub>5</sub> ) to PP-InsP <sub>4</sub> . Alternatively spliced transcript variants have been described.
Synonyms:	IHPK1; KIAA0263; MGC9925; PIUS



[View online »](#)

**Product images:**

Immunohistochemistry of paraffin-embedded Human esophagus cancer tissue using TA372794 (IP6K1 Antibody) at dilution 1/55 (Original magnification:  $\times 200$ )



Immunohistochemistry of paraffin-embedded Human esophagus cancer tissue using TA372794 (IP6K1 Antibody) at dilution 1/55, treated with synthetic peptide. (Original magnification:  $\times 200$ )