

Product datasheet for **TA372789S**

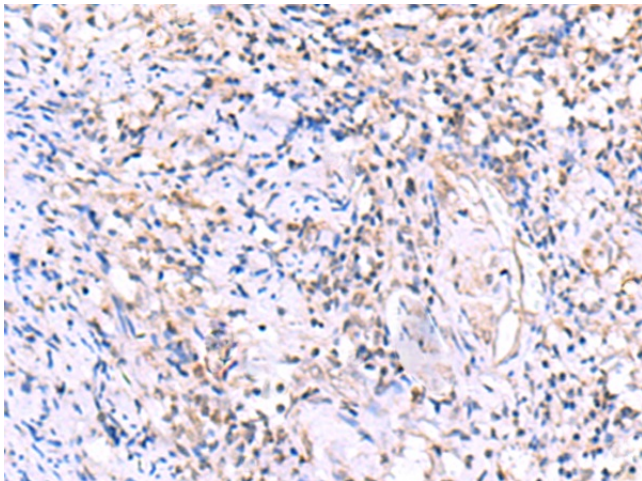
Invadolysin (LMLN) Rabbit Polyclonal Antibody

Product data:

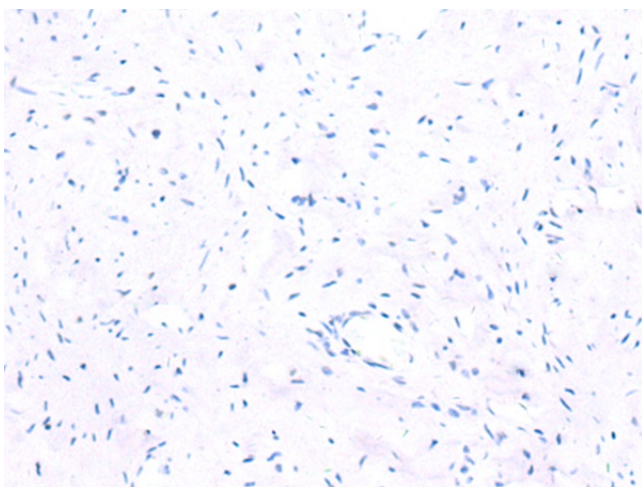
Product Type:	Primary Antibodies
Applications:	IHC
Recommended Dilution:	IHC: 25-100 Positive control: Human cervical cancer Predicted cell location: Cytoplasm
Reactivity:	Human
Host:	Rabbit
Isotype:	IgG
Clonality:	Polyclonal
Immunogen:	Synthetic peptide of human LMLN
Formulation:	pH7.4 PBS, 0.05% NaN ₃ , 40% Glycerol
Concentration:	lot specific
Purification:	Antigen affinity purification
Conjugation:	Unconjugated
Storage:	Store at -20°C.
Stability:	1 year
Gene Name:	leishmanolysin like peptidase
Database Link:	Entrez Gene 89782 Human Q96KR4
Background:	This gene encodes a zinc-metallopeptidase. The encoded protein may play a role in cell migration and invasion. Studies of a similar protein in <i>Drosophila</i> indicate a potential role in mitotic progression. Alternatively spliced transcript variants have been described.
Synonyms:	Gp63; INV; invadolysin; IX14; leishmanolysin-2; leishmanolysin-like; Msp



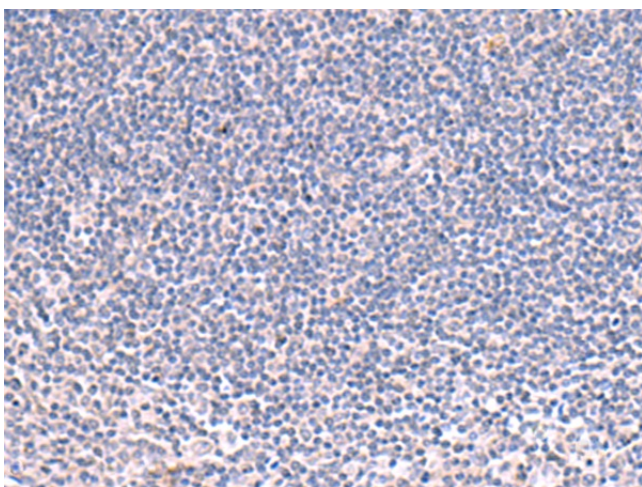
[View online »](#)

Product images:

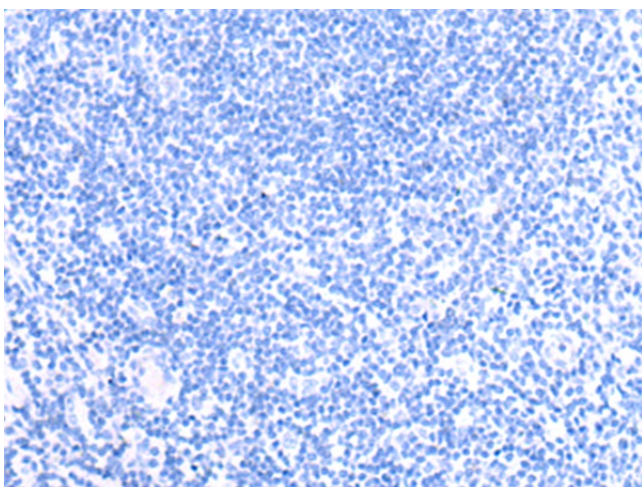
Immunohistochemistry of paraffin-embedded Human cervical cancer tissue using [TA372789] (LMLN Antibody) at dilution 1/30 (Original magnification: $\times 200$)



Immunohistochemistry of paraffin-embedded Human cervical cancer tissue using [TA372789] (LMLN Antibody) at dilution 1/30, treated with synthetic peptide. (Original magnification: $\times 200$)



Immunohistochemistry of paraffin-embedded Human tonsil tissue using [TA372789] (LMLN Antibody) at dilution 1/30 (Original magnification: ×200)



Immunohistochemistry of paraffin-embedded Human tonsil tissue using [TA372789] (LMLN Antibody) at dilution 1/30, treated with synthetic peptide. (Original magnification: ×200)