

## Product datasheet for **TA372782S**

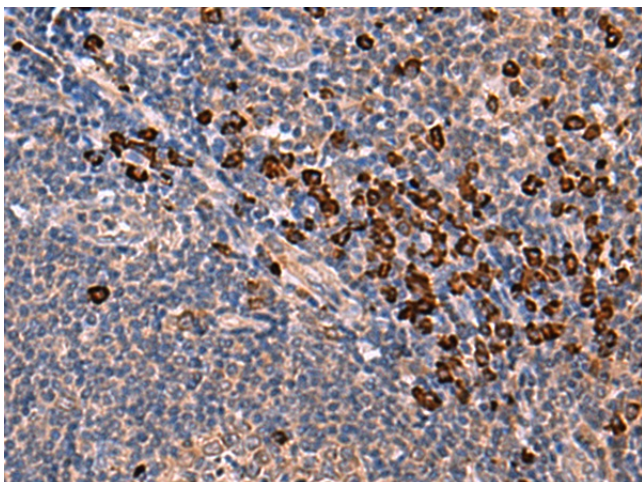
### INSM2 Rabbit Polyclonal Antibody

#### Product data:

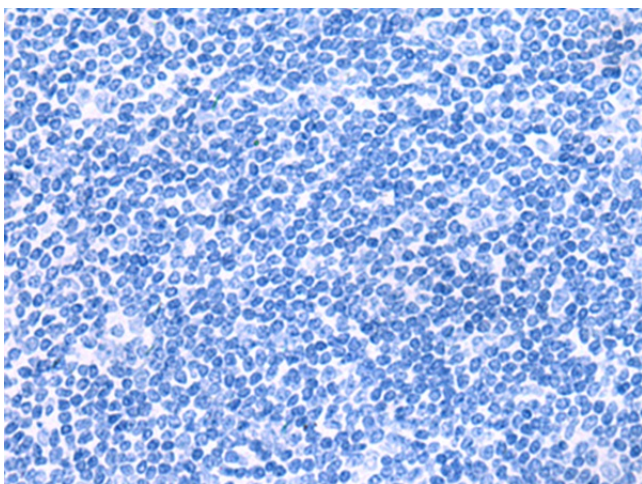
Product Type:	Primary Antibodies
Applications:	IHC
Recommended Dilution:	IHC: 30-150 Positive control: Human tonsil Predicted cell location: Cytoplasm
Reactivity:	Human
Host:	Rabbit
Isotype:	IgG
Clonality:	Polyclonal
Immunogen:	Synthetic peptide of human INSM2
Formulation:	pH7.4 PBS, 0.05% NaN <sub>3</sub> , 40% Glycerol
Concentration:	lot specific
Purification:	Antigen affinity purification
Conjugation:	Unconjugated
Storage:	Store at -20°C.
Stability:	1 year
Gene Name:	INSM transcriptional repressor 2
Database Link:	<a href="#">Entrez Gene 84684 Human Q96T92</a>
Background:	May function as a growth suppressor or tumor suppressor in liver cells and in certain neurons.
Synonyms:	IA-6; IA6; mlt1



[View online »](#)

**Product images:**

Immunohistochemistry of paraffin-embedded Human tonsil tissue using [TA372782] (INSM2 Antibody) at dilution 1/35 (Original magnification:  $\times 200$ )



Immunohistochemistry of paraffin-embedded Human tonsil tissue using [TA372782] (INSM2 Antibody) at dilution 1/35, treated with synthetic peptide. (Original magnification:  $\times 200$ )