

Product datasheet for **TA372775**

ILF1 (FOXK2) Rabbit Polyclonal Antibody

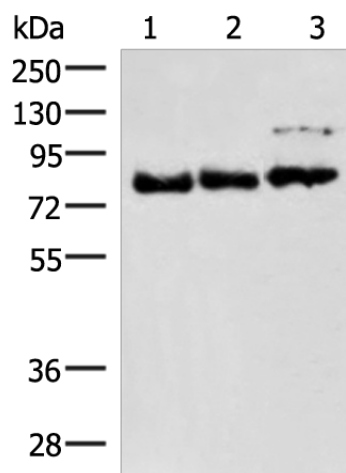
Product data:

Product Type:	Primary Antibodies
Applications:	IHC, WB
Recommended Dilution:	WB: 1000-5000 WB positive control: 231, A172 and HepG2 cell lysates IHC: 50-300 Positive control: Human breast cancer Predicted cell location: Nucleus
Reactivity:	Human
Host:	Rabbit
Isotype:	IgG
Clonality:	Polyclonal
Immunogen:	Synthetic peptide of human FOXK2
Formulation:	pH7.4 PBS, 0.05% NaN ₃ , 40% Glycerol
Concentration:	lot specific
Purification:	Antigen affinity purification
Conjugation:	Unconjugated
Storage:	Store at -20°C.
Stability:	1 year
Predicted Protein Size:	69 kDa
Gene Name:	forkhead box K2
Database Link:	Entrez Gene 3607 Human Q01167
Background:	The protein encoded by this gene contains a fork head DNA binding domain. This protein can bind to the purine-rich motifs of the HIV long terminal repeat (LTR), and to the similar purine-rich motif in the interleukin 2 (IL2) promoter. It may be involved in the regulation of viral and cellular promoter elements.
Synonyms:	FOXK1; ILF; ILF-1; ILF1

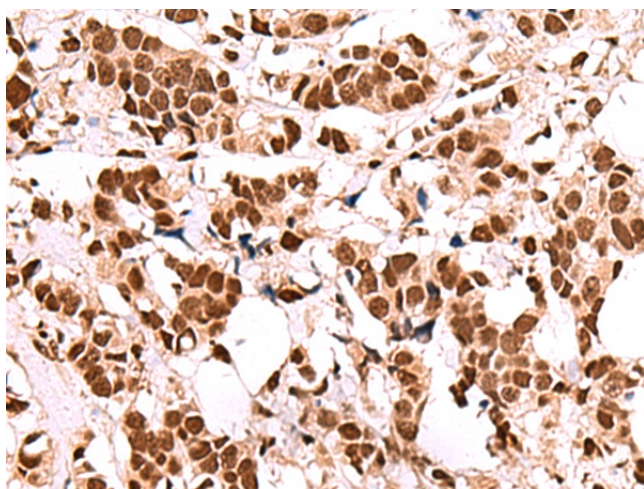


[View online »](#)

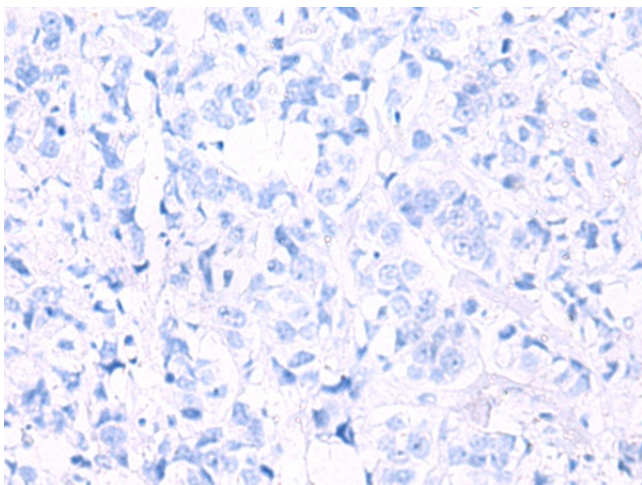
Product images:



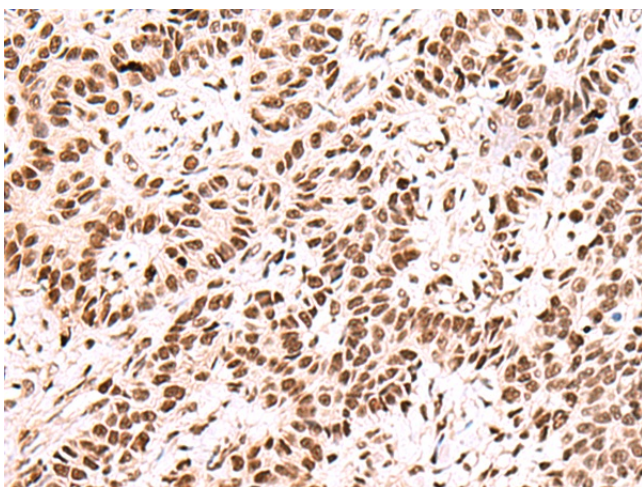
Gel: 6%SDS-PAGE
Lysate: 40 μ g
Lane 1-3: 231
A172 and HepG2 cell lysates
Primary antibody: TA372775 (FOXK2 Antibody) at dilution 1/800
Secondary antibody: Goat anti rabbit IgG at 1/8000 dilution
Exposure time: 1 minute



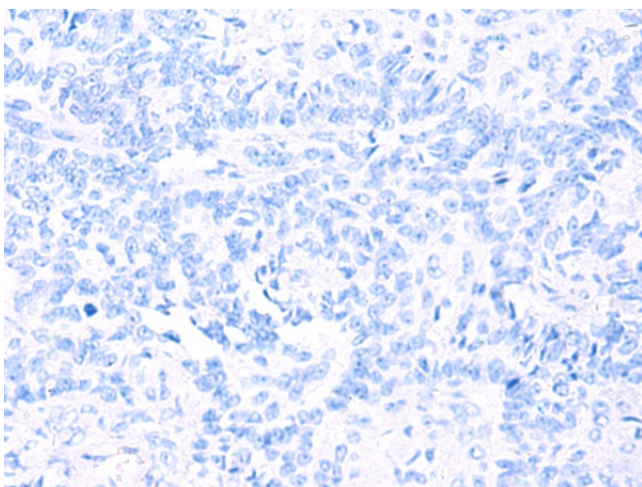
Immunohistochemistry of paraffin-embedded Human breast cancer tissue using TA372775 (FOXK2 Antibody) at dilution 1/60 (Original magnification: \times 200)



Immunohistochemistry of paraffin-embedded Human breast cancer tissue using TA372775 (FOXK2 Antibody) at dilution 1/60, treated with synthetic peptide. (Original magnification: ×200)



Immunohistochemistry of paraffin-embedded Human ovarian cancer tissue using TA372775 (FOXK2 Antibody) at dilution 1/60 (Original magnification: ×200)



Immunohistochemistry of paraffin-embedded Human ovarian cancer tissue using TA372775 (FOXK2 Antibody) at dilution 1/60, treated with synthetic peptide. (Original magnification: ×200)