

## Product datasheet for **TA372771S**

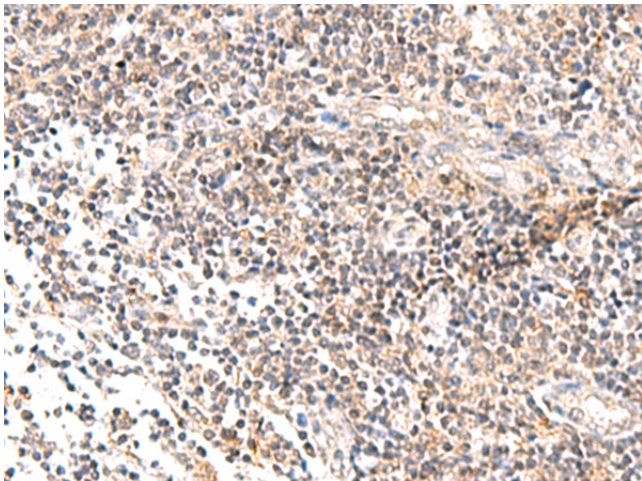
### IL36 beta (IL36B) Rabbit Polyclonal Antibody

#### Product data:

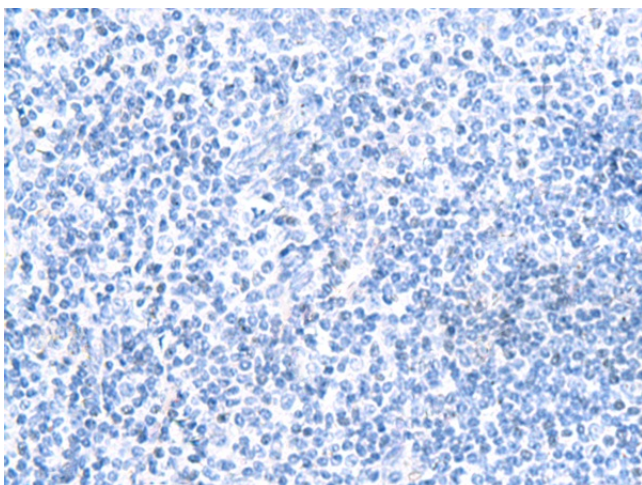
Product Type:	Primary Antibodies
Applications:	IHC
Recommended Dilution:	IHC: 30-150 Positive control: Human tonsil Predicted cell location: Secreted
Reactivity:	Human
Host:	Rabbit
Isotype:	IgG
Clonality:	Polyclonal
Immunogen:	Synthetic peptide of human IL36B
Formulation:	pH7.4 PBS, 0.05% NaN <sub>3</sub> , 40% Glycerol
Concentration:	lot specific
Purification:	Antigen affinity purification
Conjugation:	Unconjugated
Storage:	Store at -20°C.
Stability:	1 year
Gene Name:	interleukin 36, beta
Database Link:	<a href="#">Entrez Gene 27177 Human Q9NZH7</a>
Background:	The protein encoded by this gene is a member of the interleukin 1 cytokine family. Protein structure modeling indicated that this cytokine may contain a 12-stranded beta-trefoil structure that is conserved between IL1A (IL-A alpha) and IL1B (IL-1 beta). This gene and eight other interleukin 1 family genes form a cytokine gene cluster on chromosome 2. Two alternatively spliced transcript variants encoding distinct isoforms have been reported.
Synonyms:	FIL1; FIL1-(ETA); FIL1H; FIL1-(ETA); IL-1F8; IL-1H2; IL1-ETA; IL1F8; IL1H2



[View online »](#)

**Product images:**

Immunohistochemistry of paraffin-embedded Human tonsil tissue using [TA372771] (IL36B Antibody) at dilution 1/40 (Original magnification: ×200)



Immunohistochemistry of paraffin-embedded Human tonsil tissue using [TA372771] (IL36B Antibody) at dilution 1/40, treated with synthetic peptide. (Original magnification: ×200)