

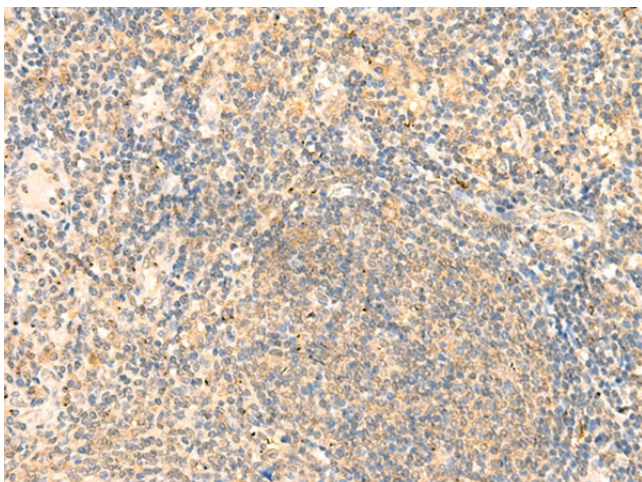
## Product datasheet for **TA372765S**

### IGFBPL1 Rabbit Polyclonal Antibody

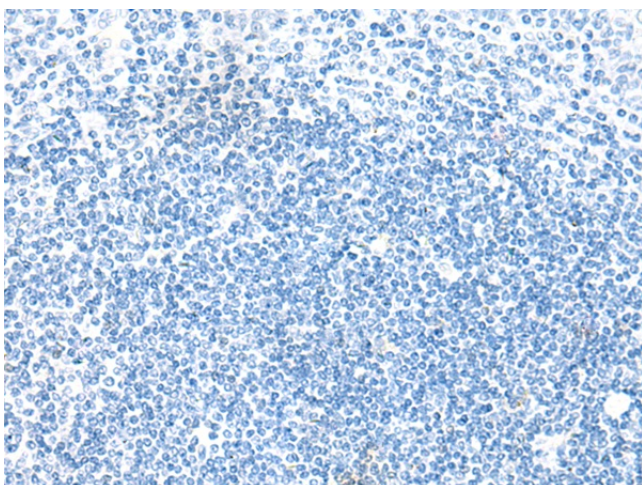
#### Product data:

Product Type:	Primary Antibodies
Applications:	IHC
Recommended Dilution:	IHC: 30-150 Positive control: Human tonsil Predicted cell location: Cytoplasm
Reactivity:	Human
Host:	Rabbit
Isotype:	IgG
Clonality:	Polyclonal
Immunogen:	Synthetic peptide of human IGFBPL1
Formulation:	pH7.4 PBS, 0.05% NaN <sub>3</sub> , 40% Glycerol
Concentration:	lot specific
Purification:	Antigen affinity purification
Conjugation:	Unconjugated
Storage:	Store at -20°C.
Stability:	1 year
Gene Name:	insulin like growth factor binding protein-like 1
Database Link:	<a href="#">Entrez Gene 347252 Human Q8WX77</a>
Background:	IGF-binding proteins prolong the half-life of IGFs and have been shown to either inhibit or stimulate the growth promoting effects of the IGFs in cell culture. They alter the interaction of IGFs with their cell surface receptors (By similarity). May be a putative tumor suppressor protein.
Synonyms:	bA113O24.1; IGFBP-RP4; IGFBPRP4

[View online »](#)

**Product images:**


Immunohistochemistry of paraffin-embedded Human tonsil tissue using [TA372765] (IGFBPL1 Antibody) at dilution 1/20 (Original magnification: ×200)



Immunohistochemistry of paraffin-embedded Human tonsil tissue using [TA372765] (IGFBPL1 Antibody) at dilution 1/20, treated with synthetic peptide. (Original magnification: ×200)