

## Product datasheet for **TA372759**

### RRP8 Rabbit Polyclonal Antibody

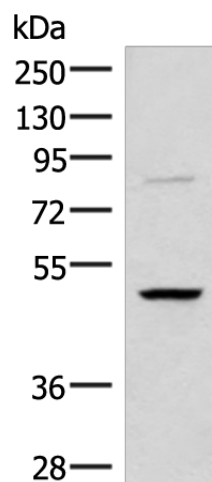
#### Product data:

Product Type:	Primary Antibodies
Applications:	WB
Recommended Dilution:	WB: 1000-5000 WB positive control: Human bladder transitional cell carcinoma grade 2-3 tissue lysate
Reactivity:	Human, Mouse, Rat
Host:	Rabbit
Isotype:	IgG
Clonality:	Polyclonal
Immunogen:	Synthetic peptide of human RRP8
Formulation:	pH7.4 PBS, 0.05% NaN <sub>3</sub> , 40% Glycerol
Concentration:	lot specific
Purification:	Antigen affinity purification
Conjugation:	Unconjugated
Storage:	Store at -20°C.
Stability:	1 year
Predicted Protein Size:	51 kDa
Gene Name:	ribosomal RNA processing 8, methyltransferase, homolog (yeast)
Database Link:	<a href="#">Entrez Gene 23378 Human O43159</a>
Background:	Essential component of the eNoSC (energy-dependent nucleolar silencing) complex, a complex that mediates silencing of rDNA in response to intracellular energy status and acts by recruiting histone-modifying enzymes. The eNoSC complex is able to sense the energy status of cell: upon glucose starvation, elevation of NAD <sup>+</sup> /NADP <sup>+</sup> ratio activates SIRT1, leading to histone H3 deacetylation followed by dimethylation of H3 at 'Lys-9' (H3K9me2) by SUV39H1 and the formation of silent chromatin in the rDNA locus. In the complex, RRP8 binds to H3K9me2 and probably acts as a methyltransferase. Its substrates are however unknown.
Synonyms:	KIAA0409; NML; Nucleomethylin



[View online »](#)

## Product images:



Gel: 8%SDS-PAGE  
Lysate: 40  $\mu$ g  
Lane: Human bladder transitional cell carcinoma grade 2-3 tissue lysate  
Primary antibody: TA372759 (RRP8 Antibody) at dilution 1/800  
Secondary antibody: Goat anti rabbit IgG at 1/5000 dilution  
Exposure time: 1 minute