

Product datasheet for **TA372750S**

HPDL Rabbit Polyclonal Antibody

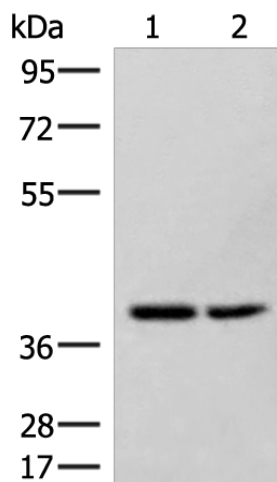
Product data:

| | |
|-------------------------|--|
| Product Type: | Primary Antibodies |
| Applications: | WB |
| Recommended Dilution: | WB: 500-2000 WB positive control: Hela and 231 cell lysates |
| Reactivity: | Human |
| Host: | Rabbit |
| Isotype: | IgG |
| Clonality: | Polyclonal |
| Immunogen: | Synthetic peptide of human HPDL |
| Formulation: | pH7.4 PBS, 0.05% NaN ₃ , 40% Glycerol |
| Concentration: | lot specific |
| Purification: | Antigen affinity purification |
| Conjugation: | Unconjugated |
| Storage: | Store at -20°C. |
| Stability: | 1 year |
| Predicted Protein Size: | 39 kDa |
| Gene Name: | 4-hydroxyphenylpyruvate dioxygenase like |
| Database Link: | Entrez Gene 84842 Human Q96IR7 |
| Background: | May have dioxygenase activity. |
| Synonyms: | 4-HPPD-L; GLOXD1; MGC15668; RP4-534D1.1 |



[View online »](#)

Product images:



Gel: 8%SDS-PAGE

Lysate: 40 μ g

Lane 1-2: HeLa and 231 cell lysates

Primary antibody: [TA372750] (HPDL Antibody) at dilution 1/400

Secondary antibody: Goat anti rabbit IgG at 1/8000 dilution

Exposure time: 1 minute