

## Product datasheet for **TA372738S**

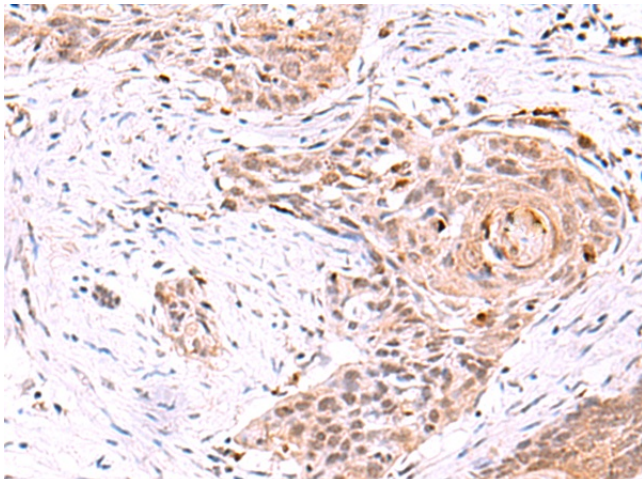
### **HNF 4 alpha (HNF4A) Rabbit Polyclonal Antibody**

#### **Product data:**

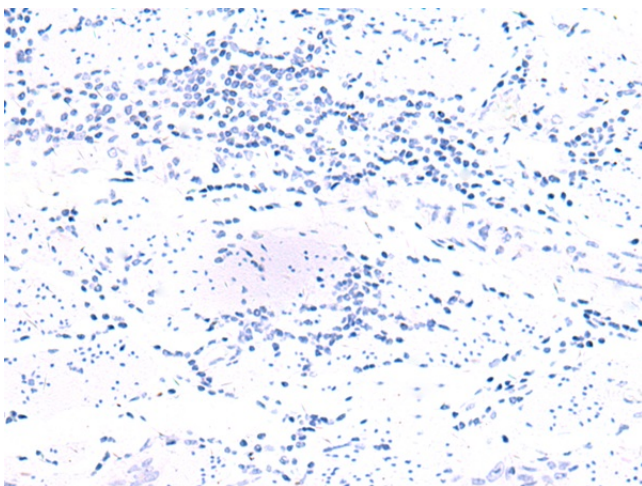
<b>Product Type:</b>	Primary Antibodies
<b>Applications:</b>	IHC
<b>Recommended Dilution:</b>	IHC: 25-100 Positive control: Human esophagus cancer Predicted cell location: Nucleus
<b>Reactivity:</b>	Human, Mouse, Rat
<b>Host:</b>	Rabbit
<b>Isotype:</b>	IgG
<b>Clonality:</b>	Polyclonal
<b>Immunogen:</b>	Synthetic peptide of human HNF4A
<b>Formulation:</b>	pH7.4 PBS, 0.05% NaN <sub>3</sub> , 40% Glycerol
<b>Concentration:</b>	lot specific
<b>Purification:</b>	Antigen affinity purification
<b>Conjugation:</b>	Unconjugated
<b>Storage:</b>	Store at -20°C.
<b>Stability:</b>	1 year
<b>Gene Name:</b>	hepatocyte nuclear factor 4 alpha
<b>Database Link:</b>	<a href="#">Entrez Gene 3172 Human P41235</a>
<b>Background:</b>	The protein encoded by this gene is a nuclear transcription factor which binds DNA as a homodimer. The encoded protein controls the expression of several genes, including hepatocyte nuclear factor 1 alpha, a transcription factor which regulates the expression of several hepatic genes. This gene may play a role in development of the liver, kidney, and intestines. Mutations in this gene have been associated with monogenic autosomal dominant non-insulin-dependent diabetes mellitus type I. Alternative splicing of this gene results in multiple transcript variants encoding several different isoforms.
<b>Synonyms:</b>	FLJ39654; HNF-4-alpha; HNF4; HNF4a7; HNF4a8; HNF4a9; HNF4alpha; HNF4alpha10/11/12; MODY; MODY1; NR2A1; NR2A21; TCF; TCF14



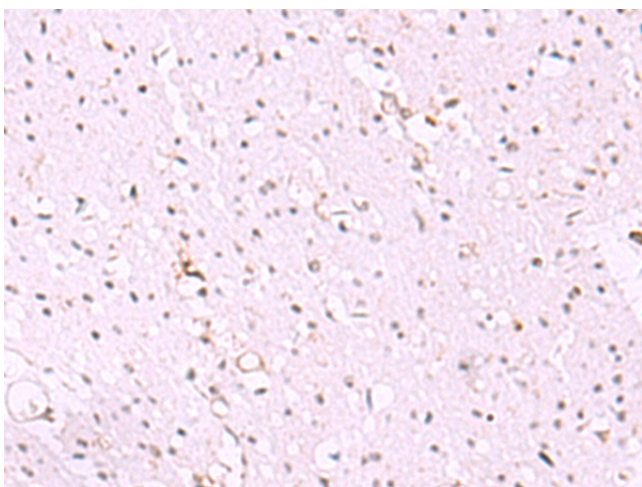
[View online »](#)

**Product images:**

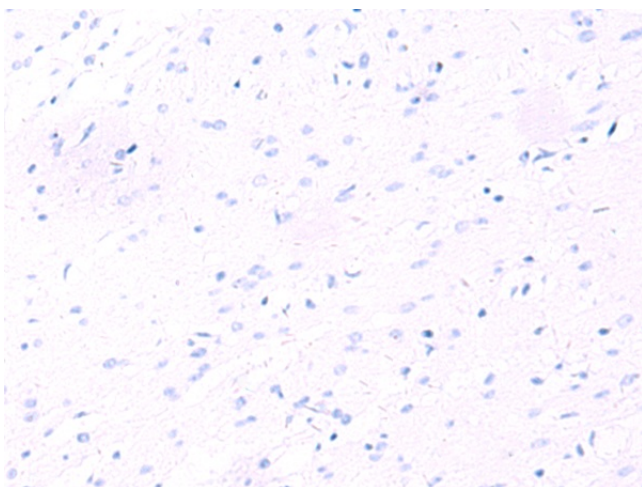
Immunohistochemistry of paraffin-embedded Human esophagus cancer tissue using [TA372738] (HNF4A Antibody) at dilution 1/30 (Original magnification:  $\times 200$ )



Immunohistochemistry of paraffin-embedded Human esophagus cancer tissue using [TA372738] (HNF4A Antibody) at dilution 1/30, treated with synthetic peptide. (Original magnification:  $\times 200$ )



Immunohistochemistry of paraffin-embedded Human colorectal cancer tissue using [TA372738] (HNF4A Antibody) at dilution 1/30 (Original magnification: x200)



Immunohistochemistry of paraffin-embedded Human colorectal cancer tissue using [TA372738] (HNF4A Antibody) at dilution 1/30, treated with synthetic peptide. (Original magnification: x200)