

Product datasheet for **TA372727S**

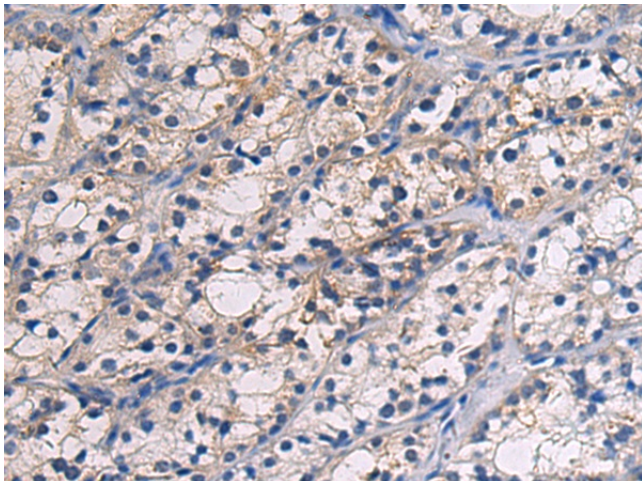
HIC1 Rabbit Polyclonal Antibody

Product data:

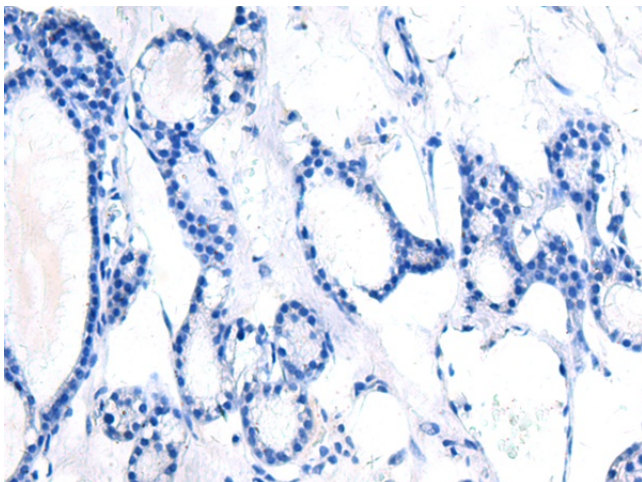
Product Type:	Primary Antibodies
Applications:	IHC
Recommended Dilution:	IHC: 50-100 Positive control: Human thyroid cancer Predicted cell location: Cytoplasm
Reactivity:	Human, Mouse
Host:	Rabbit
Isotype:	IgG
Clonality:	Polyclonal
Immunogen:	Synthetic peptide of human HIC1
Formulation:	pH7.4 PBS, 0.05% NaN ₃ , 40% Glycerol
Concentration:	lot specific
Purification:	Antigen affinity purification
Conjugation:	Unconjugated
Storage:	Store at -20°C.
Stability:	1 year
Gene Name:	hypermethylated in cancer 1
Database Link:	Entrez Gene 3090 Human Q14526
Background:	This gene functions as a growth regulatory and tumor repressor gene. Hypermethylation or deletion of the region of this gene have been associated with tumors and the contiguous-gene syndrome, Miller-Dieker syndrome. Alternative splicing of this gene results in multiple transcript variants.
Synonyms:	hic-1; ZBTB29



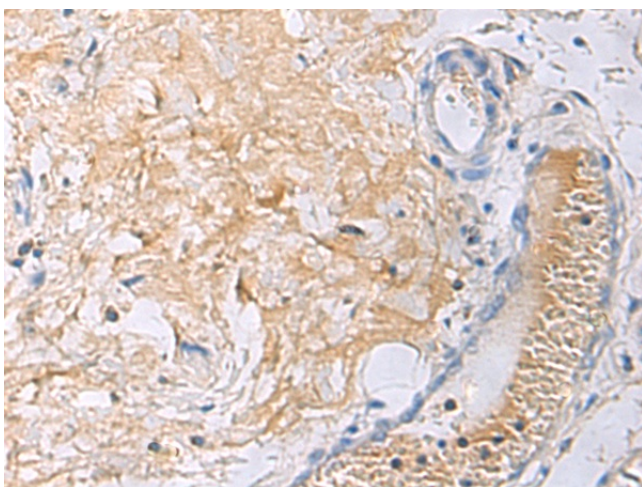
[View online »](#)

Product images:

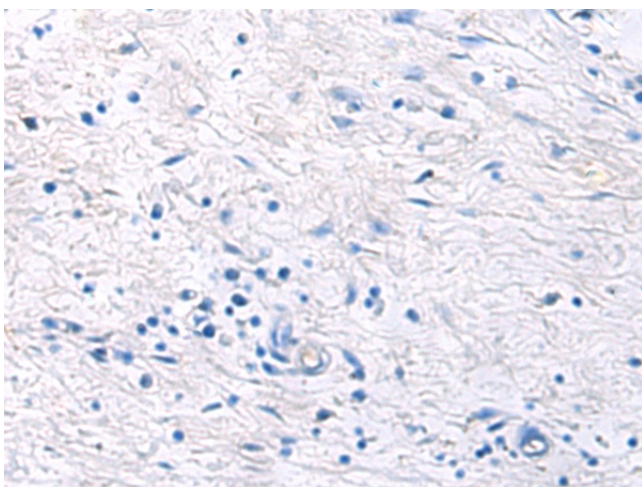
Immunohistochemistry of paraffin-embedded Human thyroid cancer using [TA372727] (HIC1 Antibody) at dilution 1/55 (Original magnification: ×200)



Immunohistochemistry of paraffin-embedded Human thyroid cancer using [TA372727] (HIC1 Antibody) at dilution 1/55, treated with synthetic peptide. (Original magnification: ×200)



Immunohistochemistry of paraffin-embedded Human gastric cancer using [TA372727] (HIC1 Antibody) at dilution 1/55 (Original magnification: ×200)



Immunohistochemistry of paraffin-embedded Human gastric cancer using [TA372727] (HIC1 Antibody) at dilution 1/55, treated with synthetic peptide. (Original magnification: ×200)