

Product datasheet for **TA372724S**

Heterogeneous Nuclear Ribonucleoprotein (A1 like) (HNRNPA1L2) Rabbit Polyclonal Antibody

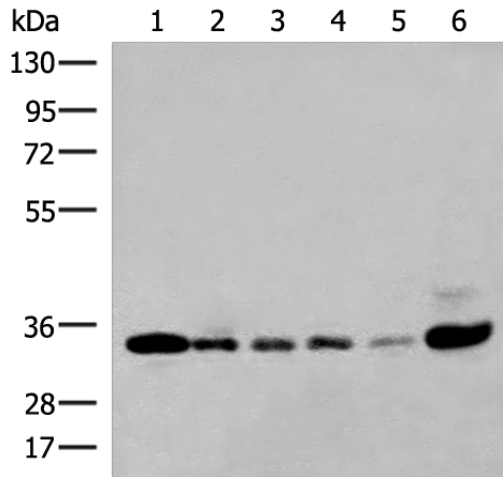
Product data:

Product Type:	Primary Antibodies
Applications:	IHC, WB
Recommended Dilution:	WB: 500-2000 WB positive control: 293T, K562, HepG2, 231, HeLa and Jurkat cell lysates IHC: 20-100 Positive control: Human tonsil Predicted cell location: Nucleus
Reactivity:	Human
Host:	Rabbit
Isotype:	IgG
Clonality:	Polyclonal
Immunogen:	Synthetic peptide of human HNRNPA1L2
Formulation:	pH7.4 PBS, 0.05% NaN ₃ , 40% Glycerol
Concentration:	lot specific
Purification:	Antigen affinity purification
Conjugation:	Unconjugated
Storage:	Store at -20°C.
Stability:	1 year
Predicted Protein Size:	34 kDa
Gene Name:	heterogeneous nuclear ribonucleoprotein A1-like 2
Database Link:	Entrez Gene 144983 Human Q32P51
Background:	Involved in the packaging of pre-mRNA into hnRNP particles, transport of poly(A) mRNA from the nucleus to the cytoplasm and may modulate splice site selection.
Synonyms:	HNRNPA1L; LOC144983; MGC102957; OTTHUMP00000018460

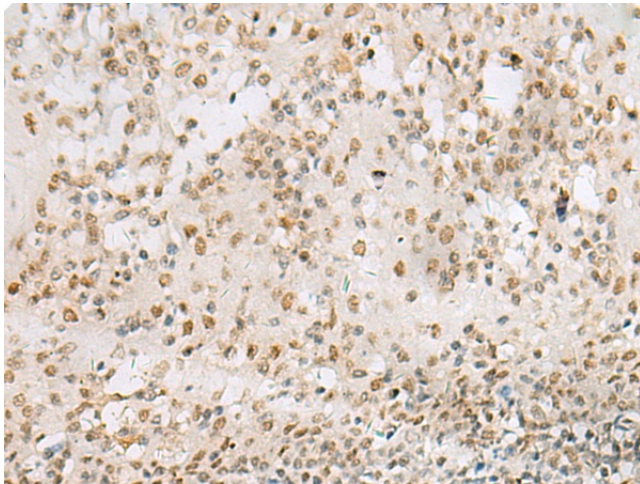


[View online »](#)

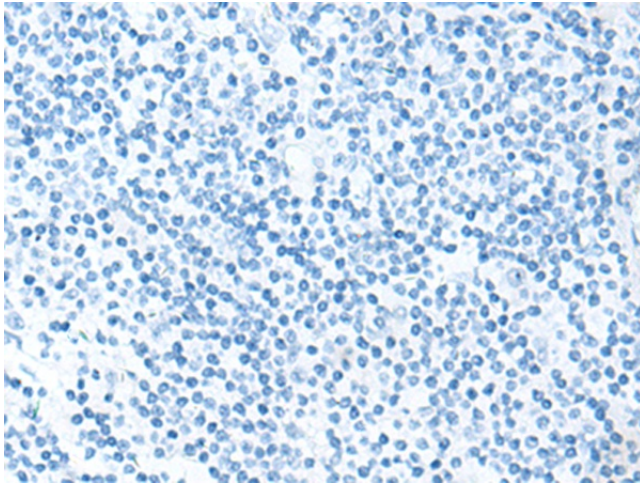
Product images:



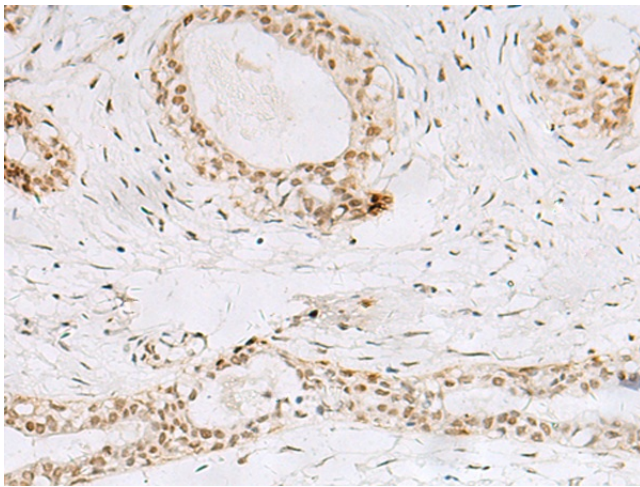
Gel: 8%SDS-PAGE
 Lysate: 40 µg
 Lane 1-6: 293T
 K562
 HepG2
 231
 Hela and Jurkat cell lysates
 Primary antibody: [TA372724] (HNRNPA1L2 Antibody) at dilution 1/250
 Secondary antibody: Goat anti rabbit IgG at 1/8000 dilution
 Exposure time: 1 minute



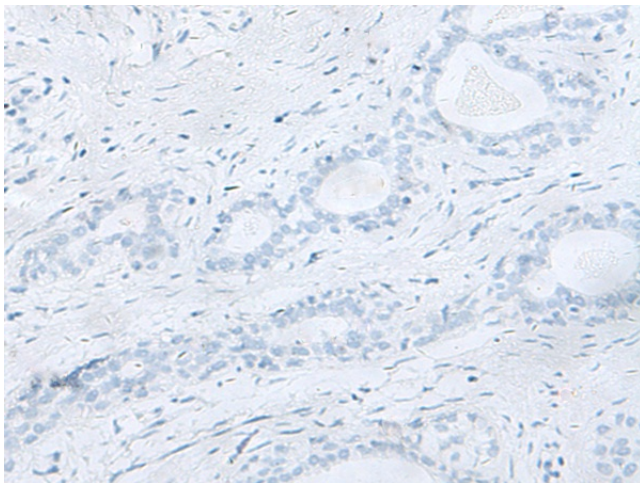
Immunohistochemistry of paraffin-embedded Human tonsil tissue using [TA372724] (HNRNPA1L2 Antibody) at dilution 1/20 (Original magnification: ×200)



Immunohistochemistry of paraffin-embedded Human tonsil tissue using [TA372724] (HNRNPA1L2 Antibody) at dilution 1/20, treated with synthetic peptide. (Original magnification: ×200)



Immunohistochemistry of paraffin-embedded Human breast cancer tissue using [TA372724] (HNRNPA1L2 Antibody) at dilution 1/20 (Original magnification: ×200)



Immunohistochemistry of paraffin-embedded Human breast cancer tissue using [TA372724] (HNRNPA1L2 Antibody) at dilution 1/20, treated with synthetic peptide. (Original magnification: ×200)