

Product datasheet for **TA372723S**

HELT Rabbit Polyclonal Antibody

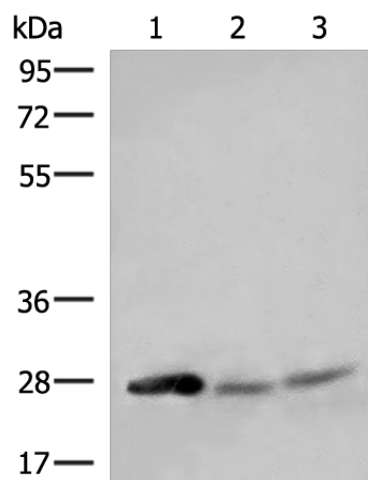
Product data:

Product Type:	Primary Antibodies
Applications:	IHC, WB
Recommended Dilution:	WB: 200-1000 WB positive control: Mouse liver tissue, Mouse heart tissue and Mouse brain tissue lysates IHC: 20-100 Positive control: Human esophagus cancer Predicted cell location: Nucleus or Cytoplasm
Reactivity:	Human, Mouse
Host:	Rabbit
Isotype:	IgG
Clonality:	Polyclonal
Immunogen:	Synthetic peptide of human HELT
Formulation:	pH7.4 PBS, 0.05% NaN ₃ , 40% Glycerol
Concentration:	lot specific
Purification:	Antigen affinity purification
Conjugation:	Unconjugated
Storage:	Store at -20°C.
Stability:	1 year
Predicted Protein Size:	27 kDa
Gene Name:	helt bHLH transcription factor
Database Link:	Entrez Gene 391723 Human A6NFD8
Background:	Transcriptional repressor which binds preferentially to the canonical E box sequence 5'-CACGCG-3'.
Synonyms:	HCM1228; HES-like; HESL; Heslike; Mgn

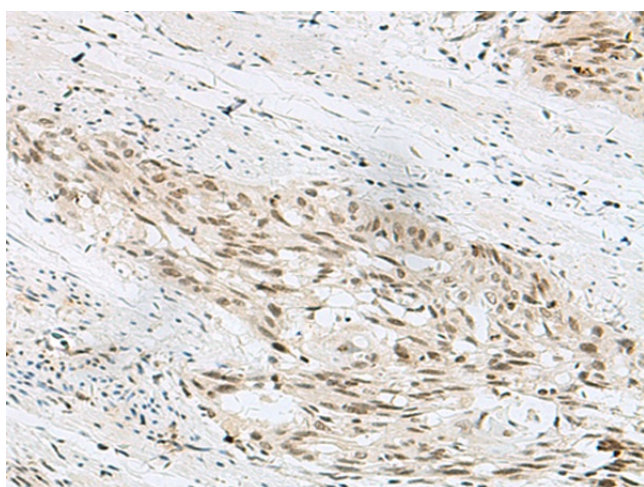


[View online »](#)

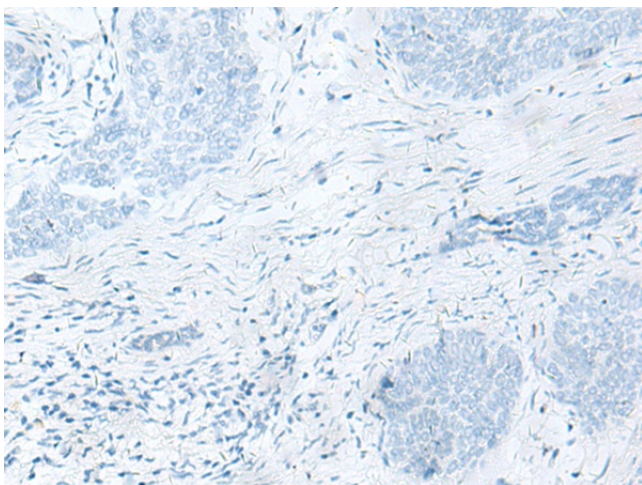
Product images:



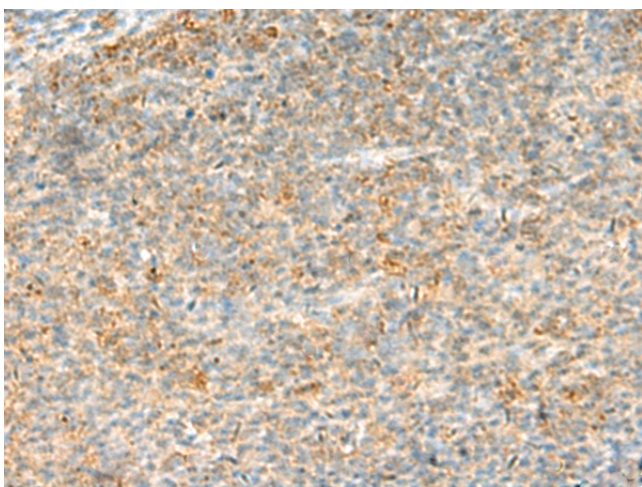
Gel: 8%SDS-PAGE
Lysate: 40 μ g
Lane 1-3: Mouse liver tissue
Mouse heart tissue and Mouse brain tissue
lysates
Primary antibody: [TA372723] (HELT Antibody) at
dilution 1/350
Secondary antibody: Goat anti rabbit IgG at
1/8000 dilution
Exposure time: 5 minutes



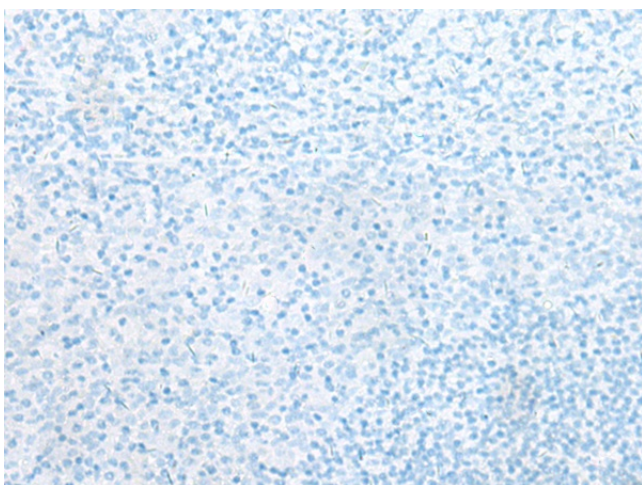
Immunohistochemistry of paraffin-embedded
Human esophagus cancer tissue using
[TA372723] (HELT Antibody) at dilution 1/30
(Original magnification: \times 200)



Immunohistochemistry of paraffin-embedded Human esophagus cancer tissue using [TA372723] (HELT Antibody) at dilution 1/30, treated with synthetic peptide. (Original magnification: ×200)



Immunohistochemistry of paraffin-embedded Human tonsil tissue using [TA372723] (HELT Antibody) at dilution 1/30 (Original magnification: ×200)



Immunohistochemistry of paraffin-embedded Human tonsil tissue using [TA372723] (HELT Antibody) at dilution 1/30, treated with synthetic peptide. (Original magnification: ×200)