

Product datasheet for **TA372722S**

HECTD2 Rabbit Polyclonal Antibody

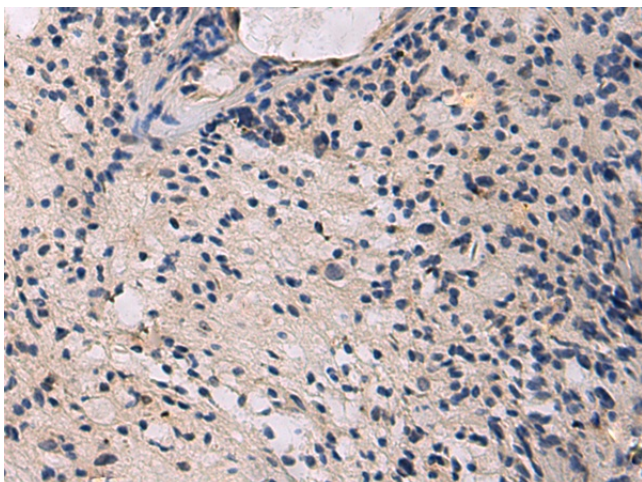
Product data:

Product Type:	Primary Antibodies
Applications:	IHC
Recommended Dilution:	IHC: 50-100 Positive control: Human brain Predicted cell location: Cytoplasm
Reactivity:	Human, Mouse
Host:	Rabbit
Isotype:	IgG
Clonality:	Polyclonal
Immunogen:	Synthetic peptide of human HECTD2
Formulation:	pH7.4 PBS, 0.05% NaN ₃ , 40% Glycerol
Concentration:	lot specific
Purification:	Antigen affinity purification
Conjugation:	Unconjugated
Storage:	Store at -20°C.
Stability:	1 year
Gene Name:	HECT domain E3 ubiquitin protein ligase 2
Database Link:	Entrez Gene 143279 Human Q5U5R9
Background:	Probable E3 ubiquitin-protein ligase which accepts ubiquitin from an E2 ubiquitin-conjugating enzyme in the form of a thioester and then directly transfers the ubiquitin to targeted substrates.
Synonyms:	FLJ16050; FLJ37306

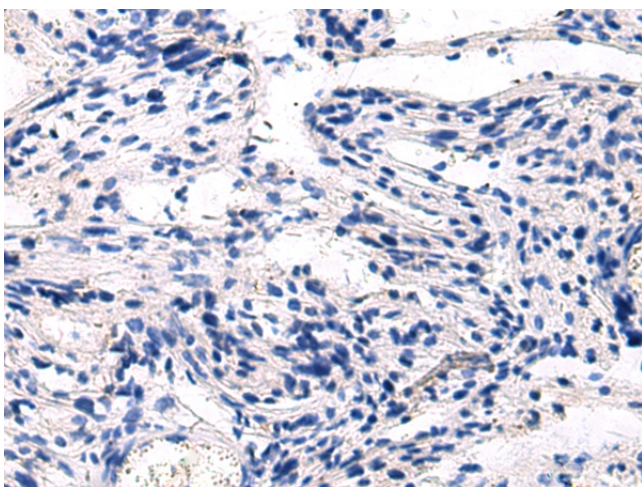


[View online »](#)

Product images:



Immunohistochemistry of paraffin-embedded Human brain using [TA372722] (HECTD2 Antibody) at dilution 1/50 (Original magnification: ×200)



Immunohistochemistry of paraffin-embedded Human brain using [TA372722] (HECTD2 Antibody) at dilution 1/50, treated with synthetic peptide. (Original magnification: ×200)