

## Product datasheet for **TA372714S**

### SNRPG Rabbit Polyclonal Antibody

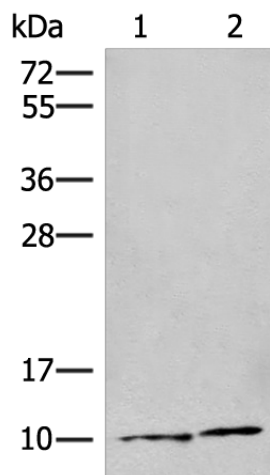
#### Product data:

Product Type:	Primary Antibodies
Applications:	IHC, WB
Recommended Dilution:	WB: 200-1000 WB positive control: Jurkat and 293T cell lysates IHC: 20-100 Positive control: Human liver cancer Predicted cell location: Nucleus
Reactivity:	Human, Mouse
Host:	Rabbit
Isotype:	IgG
Clonality:	Polyclonal
Immunogen:	Synthetic peptide of human SNRPG
Formulation:	pH7.4 PBS, 0.05% NaN <sub>3</sub> , 40% Glycerol
Concentration:	lot specific
Purification:	Antigen affinity purification
Conjugation:	Unconjugated
Storage:	Store at -20°C.
Stability:	1 year
Predicted Protein Size:	8 kDa
Gene Name:	small nuclear ribonucleoprotein polypeptide G
Database Link:	<a href="#">Entrez Gene 6637 Human P62308</a>
Background:	The protein encoded by this gene is a component of the U1, U2, U4, and U5 small nuclear ribonucleoprotein complexes, precursors of the spliceosome. The encoded protein may also be a part of the U7 small nuclear ribonucleoprotein complex, which participates in the processing of the 3' end of histone transcripts. Several transcript variants encoding different isoforms have been found for this gene.
Synonyms:	MGC117317; PBSCG; Sm-G; SmG; snRNP-G

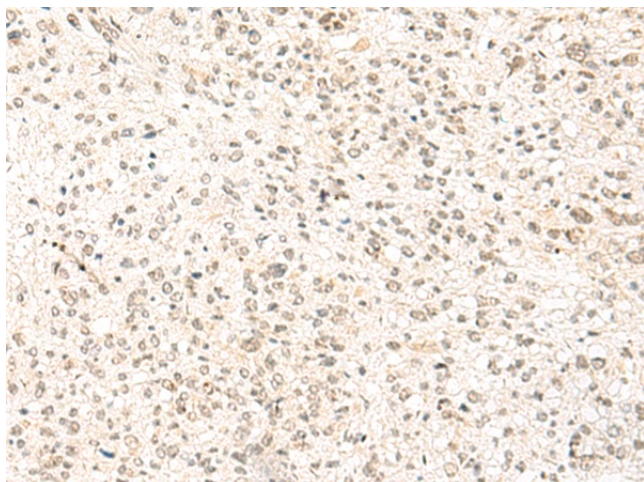


[View online »](#)

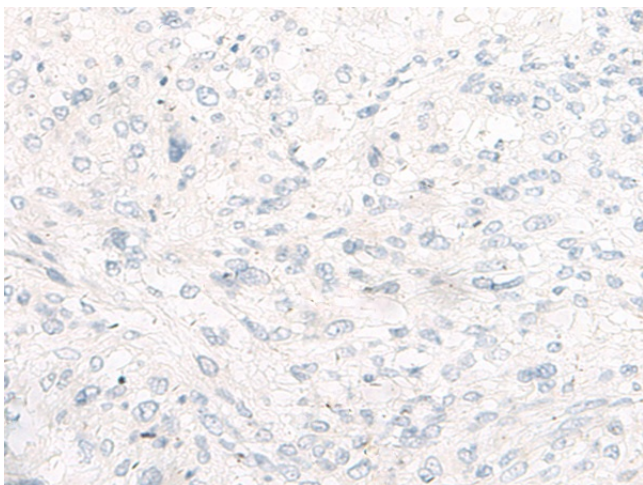
## Product images:



Gel: 12%SDS-PAGE  
Lysate: 40 µg  
Lane 1-2: Jurkat and 293T cell lysates  
Primary antibody: [TA372714] (SNRPG Antibody) at dilution 1/350  
Secondary antibody: Goat anti rabbit IgG at 1/8000 dilution  
Exposure time: 1 minute



Immunohistochemistry of paraffin-embedded Human liver cancer tissue using [TA372714] (SNRPG Antibody) at dilution 1/30 (Original magnification: ×200)



Immunohistochemistry of paraffin-embedded Human liver cancer tissue using [TA372714] (SNRPG Antibody) at dilution 1/30, treated with synthetic peptide. (Original magnification: ×200)