

## Product datasheet for **TA372712**

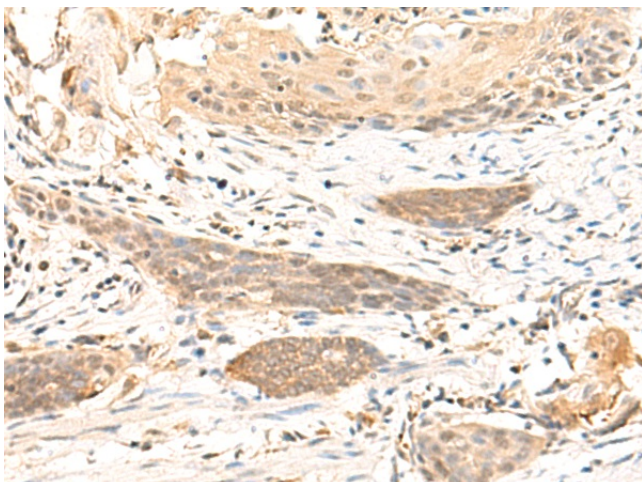
### **RBM26 Rabbit Polyclonal Antibody**

#### **Product data:**

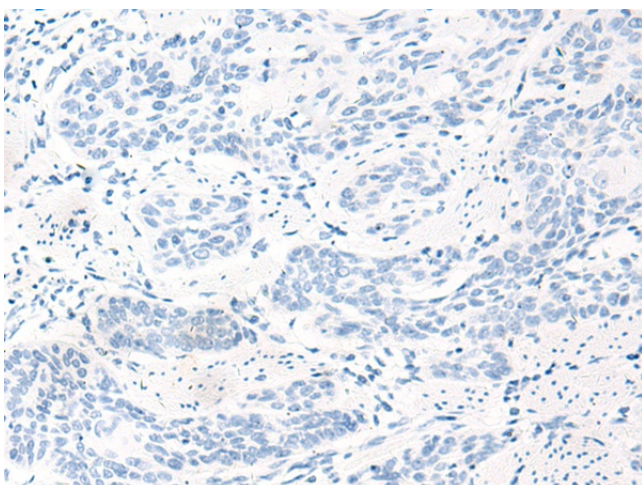
Product Type:	Primary Antibodies
Applications:	IHC
Recommended Dilution:	IHC: 30-150 Positive control: Human esophagus cancer Predicted cell location: Nucleus
Reactivity:	Human, Mouse
Host:	Rabbit
Isotype:	IgG
Clonality:	Polyclonal
Immunogen:	Synthetic peptide of human RBM26
Formulation:	pH7.4 PBS, 0.05% NaN <sub>3</sub> , 40% Glycerol
Concentration:	lot specific
Purification:	Antigen affinity purification
Conjugation:	Unconjugated
Storage:	Store at -20°C.
Stability:	1 year
Gene Name:	RNA binding motif protein 26
Database Link:	<a href="#">Entrez Gene 64062 Human Q5T8P6</a>
Background:	RBM26 (RNA binding motif protein 26) bears two RNA recognition motif (RRM) domains and a C3H1-type zinc finger. The function of RBM26 has not been characterized.
Synonyms:	ARRS2; C13orf10; FLJ20957; MGC133295; MGC133296; PRO1777; RP11-255E21.1; SE70-2; ZC3H17



[View online »](#)

**Product images:**

Immunohistochemistry of paraffin-embedded Human esophagus cancer tissue using TA372712 (RBM26 Antibody) at dilution 1/35 (Original magnification:  $\times 200$ )



Immunohistochemistry of paraffin-embedded Human esophagus cancer tissue using TA372712 (RBM26 Antibody) at dilution 1/35, treated with synthetic peptide. (Original magnification:  $\times 200$ )