

## Product datasheet for **TA372704S**

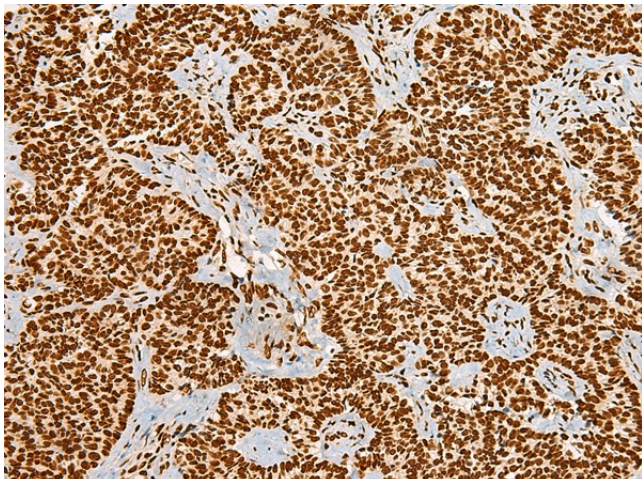
### **HABP4 Rabbit Polyclonal Antibody**

#### **Product data:**

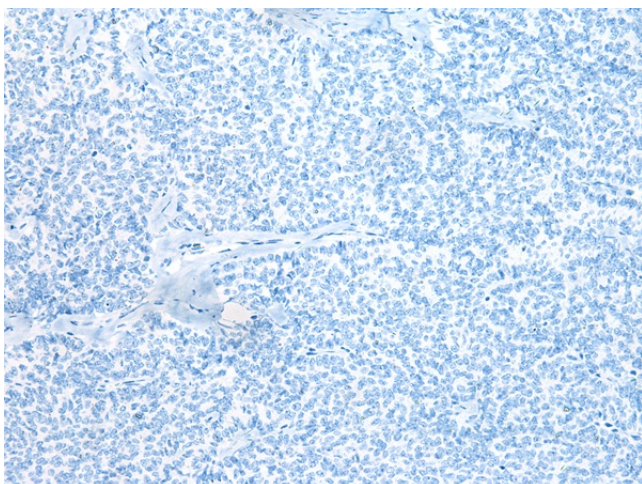
Product Type:	Primary Antibodies
Applications:	IHC
Recommended Dilution:	IHC: 50-300 Positive control: Human ovarian cancer Predicted cell location: Nucleus
Reactivity:	Human, Mouse, Rat
Host:	Rabbit
Isotype:	IgG
Clonality:	Polyclonal
Immunogen:	Synthetic peptide of human HABP4
Formulation:	pH7.4 PBS, 0.05% NaN <sub>3</sub> , 40% Glycerol
Concentration:	lot specific
Purification:	Antigen affinity purification
Conjugation:	Unconjugated
Storage:	Store at -20°C.
Stability:	1 year
Gene Name:	hyaluronan binding protein 4
Database Link:	<a href="#">Entrez Gene 22927 Human Q5JVS0</a>
Background:	May be involved in nuclear functions such as the remodeling of chromatin and the regulation of transcription.
Synonyms:	IHABP4; Ki-1/57; MGC825; SERBP1L



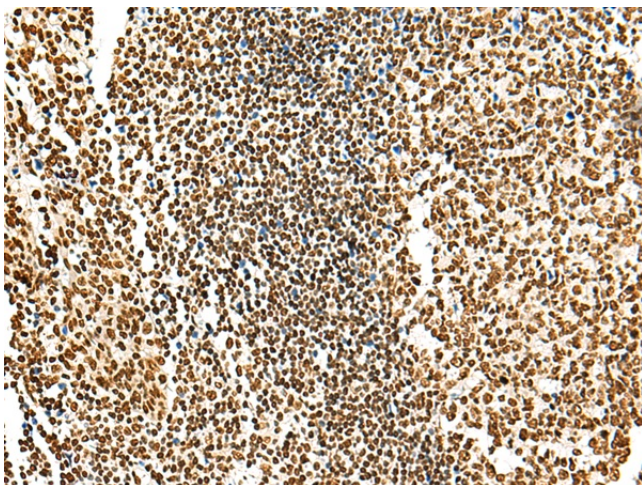
[View online »](#)

**Product images:**

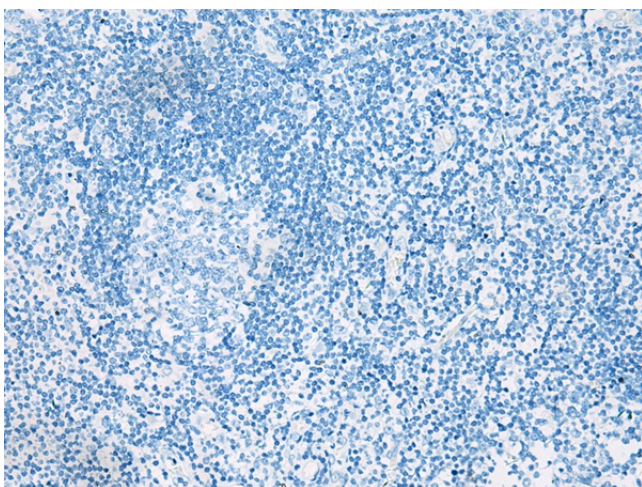
Immunohistochemistry of paraffin-embedded Human ovarian cancer tissue using [TA372704] (HABP4 Antibody) at dilution 1/55 (Original magnification:  $\times 200$ )



Immunohistochemistry of paraffin-embedded Human ovarian cancer tissue using [TA372704] (HABP4 Antibody) at dilution 1/55, treated with synthetic peptide. (Original magnification:  $\times 200$ )



Immunohistochemistry of paraffin-embedded Human tonsil tissue using [TA372704] (HABP4 Antibody) at dilution 1/55 (Original magnification: ×200)



Immunohistochemistry of paraffin-embedded Human tonsil tissue using [TA372704] (HABP4 Antibody) at dilution 1/55, treated with synthetic peptide. (Original magnification: ×200)