

Product datasheet for **TA372701S**

Guanylate Cyclase (GUCY1B2) Rabbit Polyclonal Antibody

Product data:

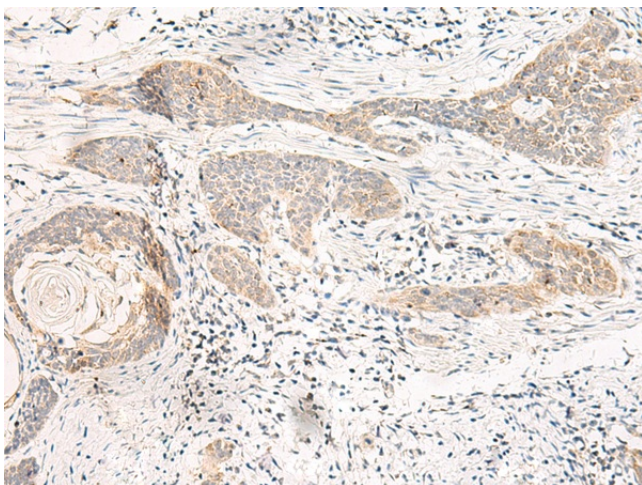
Product Type:	Primary Antibodies
Applications:	IHC
Recommended Dilution:	IHC: 20–100 Positive control: Human esophagus cancer Predicted cell location: Cytoplasm
Reactivity:	Human
Host:	Rabbit
Isotype:	IgG
Clonality:	Polyclonal
Immunogen:	Synthetic peptide of human GUCY1B2
Formulation:	pH7.4 PBS, 0.05% NaN ₃ , 40% Glycerol
Concentration:	lot specific
Purification:	Antigen affinity purification
Conjugation:	Unconjugated
Storage:	Store at –20°C.
Stability:	1 year
Gene Name:	guanylate cyclase 1, soluble, beta 2 (pseudogene)
Database Link:	Entrez Gene 2974 Human O75343

Background: Guanylate Cyclase is an heterodimer of an alpha and a beta chain. Its enzymatic activity transforms GTP to GMP releasing a diphosphate. It binds 1 or 2 hemes per heterodimer. It is activated by nitric oxide in the presence of magnesium or manganese ions. There are two types of guanylate cyclase: soluble form and membrane-associated receptor form.

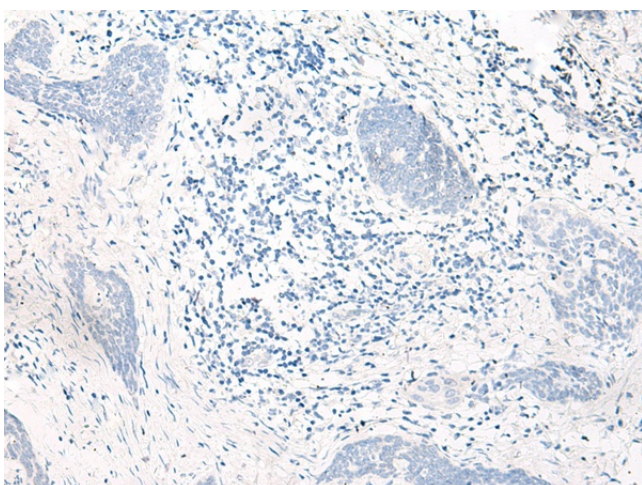


Synonyms: GC-SB2; GCS-beta-2

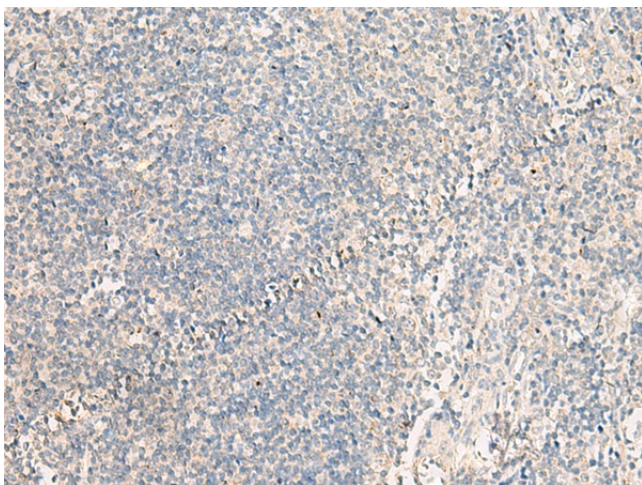
Product images:



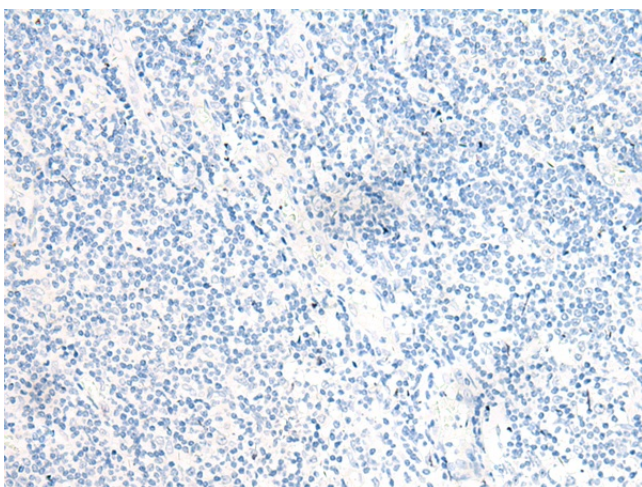
Immunohistochemistry of paraffin-embedded Human esophagus cancer tissue using [TA372701] (GUCY1B2 Antibody) at dilution 1/20 (Original magnification: ×200)



Immunohistochemistry of paraffin-embedded Human esophagus cancer tissue using [TA372701] (GUCY1B2 Antibody) at dilution 1/20, treated with synthetic peptide. (Original magnification: ×200)



Immunohistochemistry of paraffin-embedded Human tonsil tissue using [TA372701] (GUCY1B2 Antibody) at dilution 1/20 (Original magnification: ×200)



Immunohistochemistry of paraffin-embedded Human tonsil tissue using [TA372701] (GUCY1B2 Antibody) at dilution 1/20, treated with synthetic peptide. (Original magnification: ×200)