

## Product datasheet for **TA372700**

### GTF3C4 Rabbit Polyclonal Antibody

#### Product data:

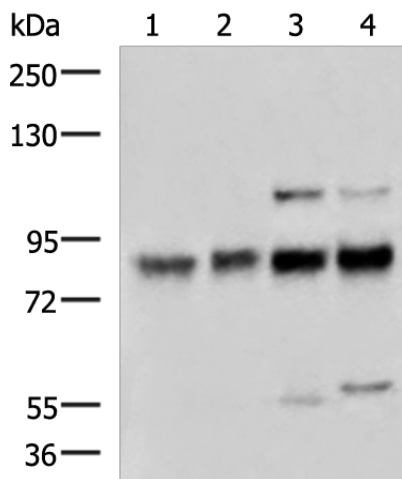
Product Type:	Primary Antibodies
Applications:	IHC, WB
Recommended Dilution:	WB: 1000-5000 WB positive control: A172, Hela, Jurkat and Raji cell lysates IHC: 150-300 Positive control: Human esophagus cancer Predicted cell location: Nucleus
Reactivity:	Human, Mouse
Host:	Rabbit
Isotype:	IgG
Clonality:	Polyclonal
Immunogen:	Synthetic peptide of human GTF3C4
Formulation:	pH7.4 PBS, 0.05% NaN <sub>3</sub> , 40% Glycerol
Concentration:	lot specific
Purification:	Antigen affinity purification
Conjugation:	Unconjugated
Storage:	Store at -20°C.
Stability:	1 year
Predicted Protein Size:	92 kDa
Gene Name:	general transcription factor IIIC subunit 4
Database Link:	<a href="#">Entrez Gene 9329 Human Q9UKN8</a>
Background:	Essential for RNA polymerase III to make a number of small nuclear and cytoplasmic RNAs, including 5S RNA, tRNA, and adenovirus-associated (VA) RNA of both cellular and viral origin. Has histone acetyltransferase activity (HAT) with unique specificity for free and nucleosomal H3. May cooperate with GTF3C5 in facilitating the recruitment of TFIIB and RNA polymerase through direct interactions with BRF1, POLR3C and POLR3F. May be localized close to the A box.



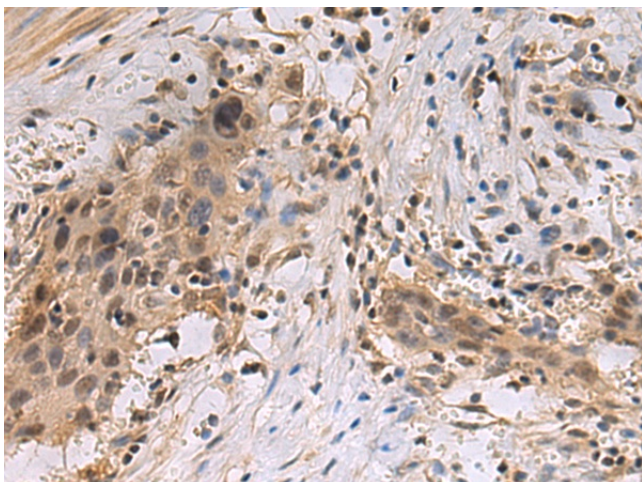
[View online »](#)

Synonyms: FLJ21002; KAT12; MGC138450; TF3C-delta; TFIII90; TFIIC90; TFIIC290; TFIICDELTA

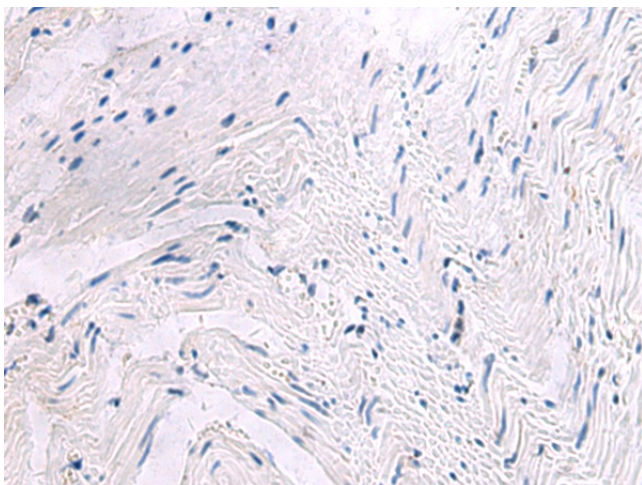
**Product images:**



Gel: 6%SDS-PAGE  
 Lysate: 40 µg  
 Lane 1-4: A172  
 HeLa  
 Jurkat and Raji cell lysates  
 Primary antibody: TA372700 (GTF3C4 Antibody)  
 at dilution 1/1300  
 Secondary antibody: Goat anti rabbit IgG at  
 1/5000 dilution  
 Exposure time: 2 minutes



Immunohistochemistry of paraffin-embedded  
 Human esophagus cancer tissue using TA372700  
 (GTF3C4 Antibody) at dilution 1/160 (Original  
 magnification: x200)



Immunohistochemistry of paraffin-embedded Human esophagus cancer tissue using TA372700 (GTF3C4 Antibody) at dilution 1/160, treated with synthetic peptide. (Original magnification: ×200)