

Product datasheet for **TA372695S**

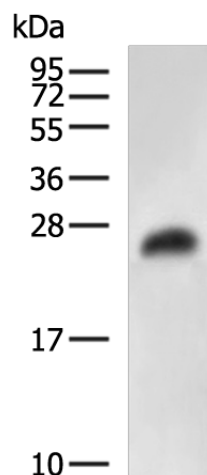
GSTA5 Rabbit Polyclonal Antibody

Product data:

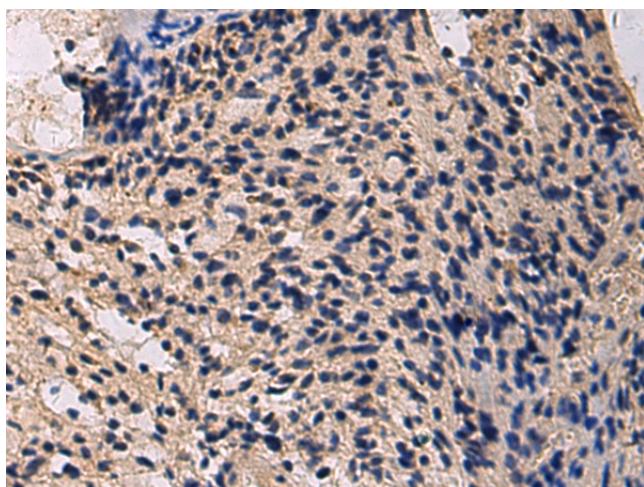
Product Type:	Primary Antibodies
Applications:	IHC, WB
Recommended Dilution:	WB: 1000-5000 WB positive control: Rat liver tissue lysate IHC: 200-300 Positive control: Human brain Predicted cell location: Cytoplasm
Reactivity:	Human, Rat
Host:	Rabbit
Isotype:	IgG
Clonality:	Polyclonal
Immunogen:	Synthetic peptide of human GSTA5
Formulation:	pH7.4 PBS, 0.05% NaN ₃ , 40% Glycerol
Concentration:	lot specific
Purification:	Antigen affinity purification
Conjugation:	Unconjugated
Storage:	Store at -20°C.
Stability:	1 year
Predicted Protein Size:	26 kDa
Gene Name:	glutathione S-transferase alpha 5
Database Link:	Entrez Gene 221357 Human Q7RTV2
Background:	The glutathione S-transferases (GST; EC 2.5.1.18) catalyze the conjugation of reduced glutathiones and a variety of electrophiles, including many known carcinogens and mutagens. The cytosolic GSTs belong to a large superfamily, with members located on different chromosomes. For additional information on GSTs, see GSTA1 (MIM 138359).
Synonyms:	OTTHUMP00000016610



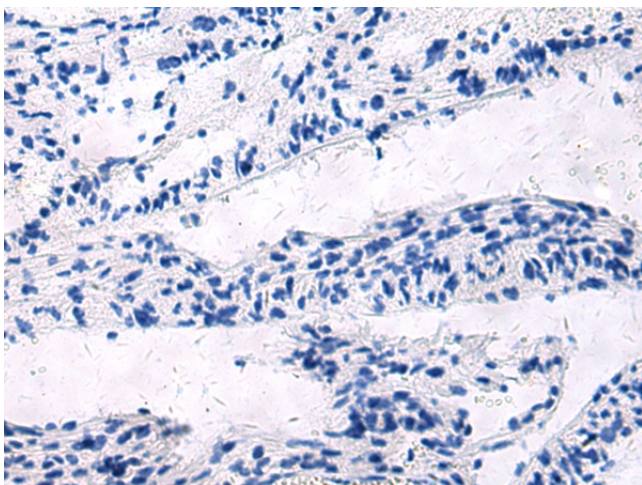
[View online »](#)

Product images:

Gel: 12%SDS-PAGE
Lysate: 40 µg
Lane: Rat liver tissue lysate
Primary antibody: [TA372695] (GSTA5 Antibody) at dilution 1/2700
Secondary antibody: Goat anti rabbit IgG at 1/5000 dilution
Exposure time: 30 seconds



Immunohistochemistry of paraffin-embedded Human brain tissue using [TA372695] (GSTA5 Antibody) at dilution 1/180 (Original magnification: ×200)



Immunohistochemistry of paraffin-embedded Human brain tissue using [TA372695] (GSTA5 Antibody) at dilution 1/180, treated with synthetic peptide. (Original magnification: $\times 200$)