

## Product datasheet for **TA372688S**

### GRHPR Rabbit Polyclonal Antibody

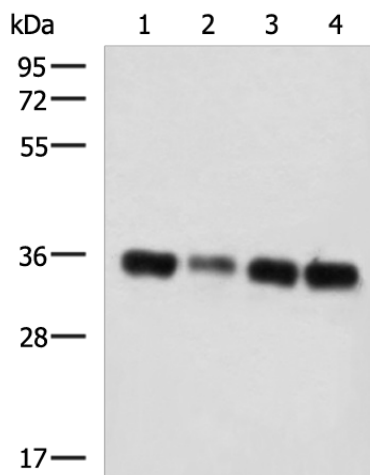
#### Product data:

Product Type:	Primary Antibodies
Applications:	IHC, WB
Recommended Dilution:	WB: 500-2000 WB positive control: LO2, HepG2, 231, 293T cell lysates IHC: 25-100 Positive control: Human tonsil Predicted cell location: Cell membrane
Reactivity:	Human, Mouse
Host:	Rabbit
Isotype:	IgG
Clonality:	Polyclonal
Immunogen:	Synthetic peptide of human GRHPR
Formulation:	pH7.4 PBS, 0.05% NaN <sub>3</sub> , 40% Glycerol
Concentration:	lot specific
Purification:	Antigen affinity purification
Conjugation:	Unconjugated
Storage:	Store at -20°C.
Stability:	1 year
Predicted Protein Size:	36 kDa
Gene Name:	glyoxylate reductase/hydroxypyruvate reductase
Database Link:	<a href="#">Entrez Gene 9380 Human Q9UBQ7</a>
Background:	This gene encodes an enzyme with hydroxypyruvate reductase, glyoxylate reductase, and D-glycerate dehydrogenase enzymatic activities. The enzyme has widespread tissue expression and has a role in metabolism. Type II hyperoxaluria is caused by mutations in this gene.
Synonyms:	GLXR; GLYD; PH2

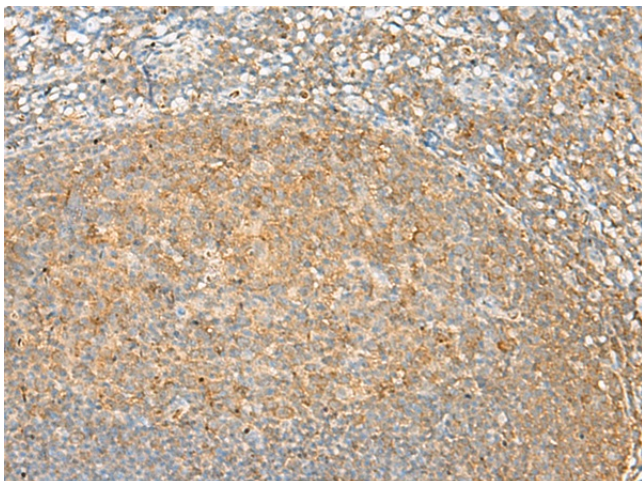


[View online »](#)

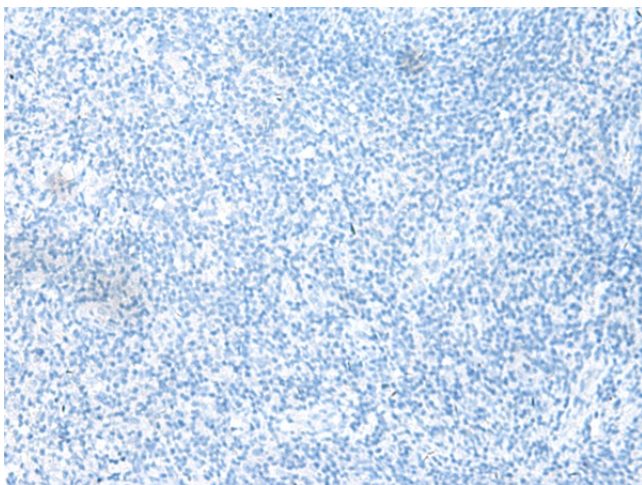
## Product images:



Gel: 8%SDS-PAGE  
Lysate: 40  $\mu$ g  
Lane 1-4: LO2  
HepG2  
231  
293T cell lysates  
Primary antibody: [TA372688] (GRHPR Antibody)  
at dilution 1/750  
Secondary antibody: Goat anti rabbit IgG at  
1/5000 dilution  
Exposure time: 3 minutes



Immunohistochemistry of paraffin-embedded  
Human tonsil tissue using [TA372688] (GRHPR  
Antibody) at dilution 1/30 (Original magnification:  
 $\times$ 200)



Immunohistochemistry of paraffin-embedded Human tonsil tissue using [TA372688] (GRHPR Antibody) at dilution 1/30, treated with synthetic peptide. (Original magnification:  $\times 200$ )