

## Product datasheet for **TA372687**

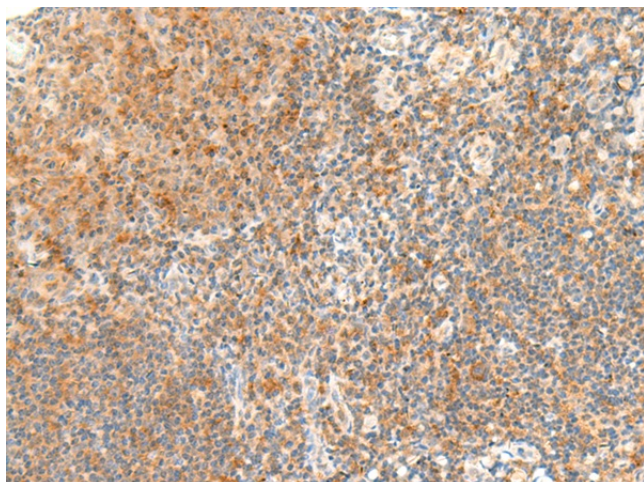
### GRF2 (RAPGEF1) Rabbit Polyclonal Antibody

#### Product data:

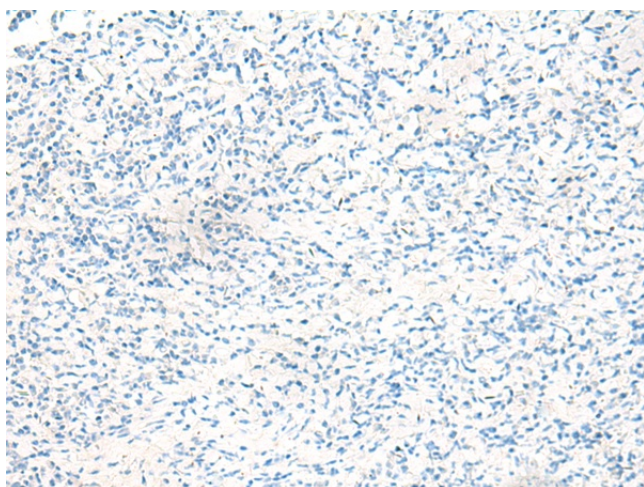
Product Type:	Primary Antibodies
Applications:	IHC
Recommended Dilution:	IHC: 40-200 Positive control: Human tonsil Predicted cell location: Cytoplasm
Reactivity:	Human
Host:	Rabbit
Isotype:	IgG
Clonality:	Polyclonal
Immunogen:	Synthetic peptide of human RAPGEF1
Formulation:	pH7.4 PBS, 0.05% NaN <sub>3</sub> , 40% Glycerol
Concentration:	lot specific
Purification:	Antigen affinity purification
Conjugation:	Unconjugated
Storage:	Store at -20°C.
Stability:	1 year
Gene Name:	Rap guanine nucleotide exchange factor 1
Database Link:	<a href="#">Entrez Gene 2889 Human Q13905</a>
Background:	This gene encodes a human guanine nucleotide exchange factor. It transduces signals from CRK by binding the SH3 domain of CRK, and activating several members of the Ras family of GTPases. This signaling cascade that may be involved in apoptosis, integrin-mediated signal transduction, and cell transformation. Several alternatively spliced transcript variants of this gene have been described, but the full-length nature of some variants has not been determined.
Synonyms:	C3G; DKFZp781P1719; GRF2



[View online »](#)

**Product images:**

Immunohistochemistry of paraffin-embedded Human tonsil tissue using TA372687 (RAPGEF1 Antibody) at dilution 1/45 (Original magnification: ×200)



Immunohistochemistry of paraffin-embedded Human tonsil tissue using TA372687 (RAPGEF1 Antibody) at dilution 1/45, treated with synthetic peptide. (Original magnification: ×200)