

## Product datasheet for **TA372682S**

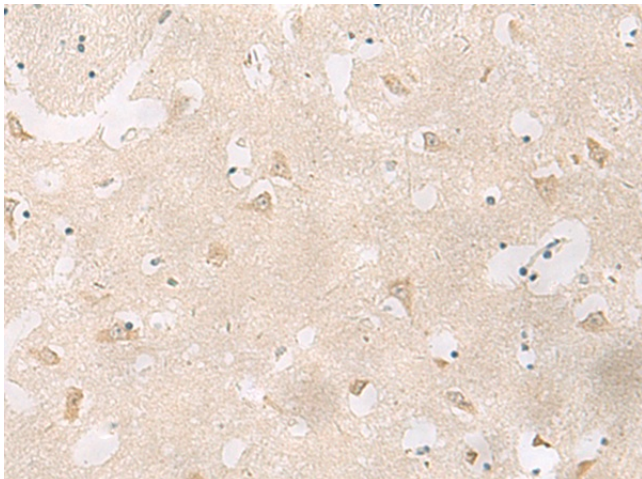
### GPR83 Rabbit Polyclonal Antibody

#### Product data:

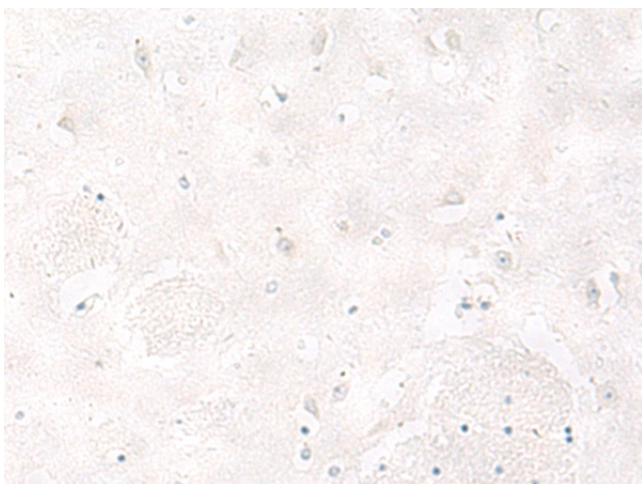
|                       |  |
|-----------------------|--|
| Product Type:         | Primary Antibodies   |
| Applications:         | IHC  |
| Recommended Dilution: | IHC: 50-300<br>Positive control: Human brain<br>Predicted cell location: Cell membrane |
| Reactivity:           | Human, Mouse   |
| Host:                 | Rabbit   |
| Isotype:              | IgG  |
| Clonality:            | Polyclonal   |
| Immunogen:            | Synthetic peptide of human GPR83   |
| Formulation:          | pH7.4 PBS, 0.05% NaN <sub>3</sub> , 40% Glycerol                                       |
| Concentration:        | lot specific   |
| Purification:         | Antigen affinity purification  |
| Conjugation:          | Unconjugated   |
| Storage:              | Store at -20°C.  |
| Stability:            | 1 year   |
| Gene Name:            | G protein-coupled receptor 83  |
| Database Link:        | <a href="#">Entrez Gene 10888 Human Q9NYM4</a>   |
| Background:           | Orphan receptor. Could be a neuropeptide Y receptor.                                   |
| Synonyms:             | AW045253; Gir; Gpr72; RP39; RP82; RP105  |



[View online »](#)

**Product images:**

Immunohistochemistry of paraffin-embedded Human brain tissue using [TA372682] (GPR83 Antibody) at dilution 1/60 (Original magnification: ×200)



Immunohistochemistry of paraffin-embedded Human brain tissue using [TA372682] (GPR83 Antibody) at dilution 1/60, treated with synthetic peptide. (Original magnification: ×200)