

Product datasheet for **TA372677S**

GPR161 Rabbit Polyclonal Antibody

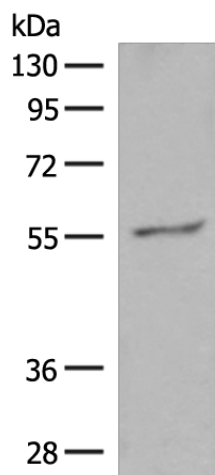
Product data:

Product Type:	Primary Antibodies
Applications:	IHC, WB
Recommended Dilution:	WB: 500-2000 WB positive control: Hela cell lysate IHC: 30-150 Positive control: Human tonsil Predicted cell location: Cytoplasm and Cell membrane
Reactivity:	Human, Mouse
Host:	Rabbit
Isotype:	IgG
Clonality:	Polyclonal
Immunogen:	Synthetic peptide of human GPR161
Formulation:	pH7.4 PBS, 0.05% NaN ₃ , 40% Glycerol
Concentration:	lot specific
Purification:	Antigen affinity purification
Conjugation:	Unconjugated
Storage:	Store at -20°C.
Stability:	1 year
Predicted Protein Size:	59 kDa
Gene Name:	G protein-coupled receptor 161
Database Link:	Entrez Gene 23432 Human Q8N6U8
Background:	The protein encoded by this gene is an orphan G protein-coupled receptor whose ligand is unknown. This gene is overexpressed in triple-negative breast cancer, and disruption of this gene slows the proliferation of basal breast cancer cells. Therefore, this gene is a potential drug target for triple-negative breast cancer.
Synonyms:	FLJ33952; OTTHUMP00000032585; OTTHUMP00000032586; OTTHUMP00000032587; RE2

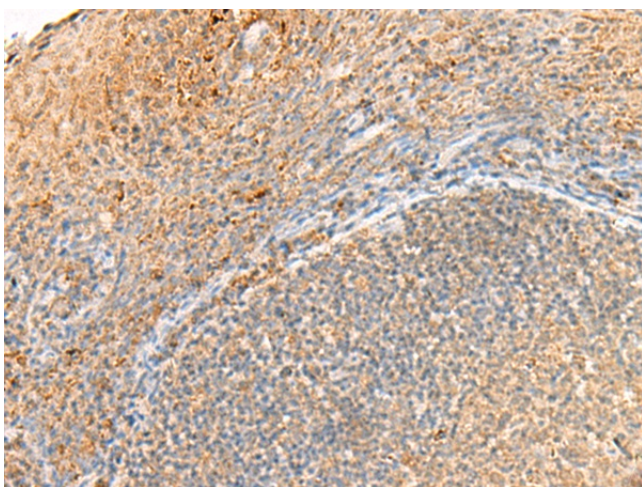


[View online »](#)

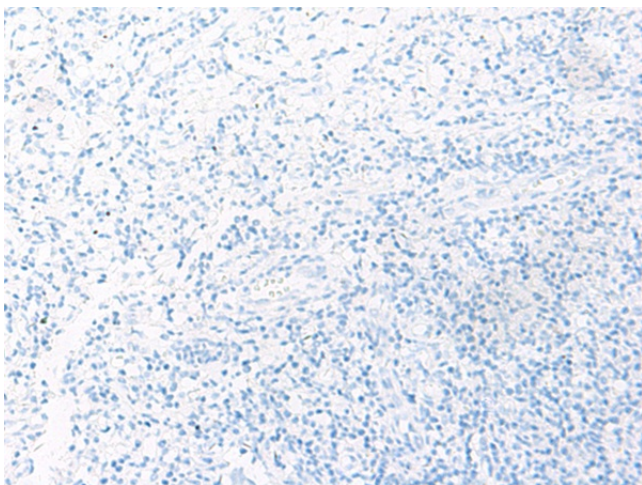
Product images:



Gel: 8%SDS-PAGE
Lysate: 40 μ g
Lane: HeLa cell lysate
Primary antibody: [TA372677] (GPR161 Antibody) at dilution 1/500
Secondary antibody: Goat anti rabbit IgG at 1/8000 dilution
Exposure time: 2 minutes



Immunohistochemistry of paraffin-embedded Human tonsil tissue using [TA372677] (GPR161 Antibody) at dilution 1/40 (Original magnification: $\times 200$)



Immunohistochemistry of paraffin-embedded Human tonsil tissue using [TA372677] (GPR161 Antibody) at dilution 1/40, treated with synthetic peptide. (Original magnification: $\times 200$)