

Product datasheet for **TA372676**

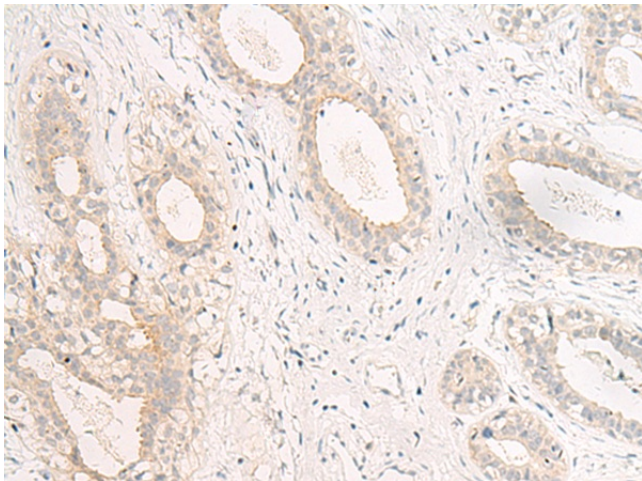
GPR157 Rabbit Polyclonal Antibody

Product data:

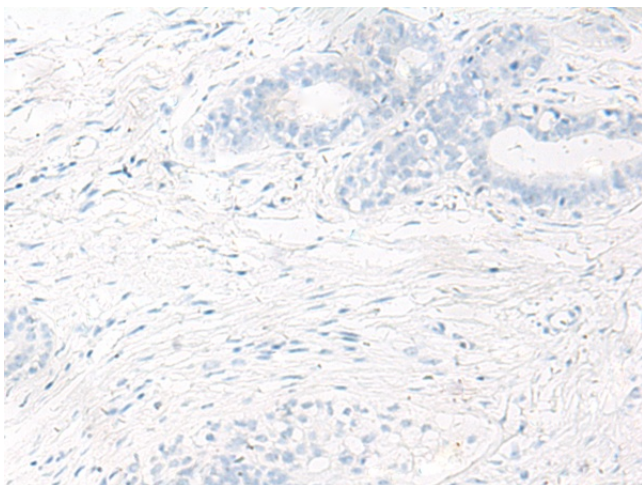
Product Type:	Primary Antibodies
Applications:	IHC
Recommended Dilution:	IHC: 40-200 Positive control: Human breast cancer Predicted cell location: Cell projection
Reactivity:	Human
Host:	Rabbit
Isotype:	IgG
Clonality:	Polyclonal
Immunogen:	Synthetic peptide of human GPR157
Formulation:	pH7.4 PBS, 0.05% NaN ₃ , 40% Glycerol
Concentration:	lot specific
Purification:	Antigen affinity purification
Conjugation:	Unconjugated
Storage:	Store at -20°C.
Stability:	1 year
Gene Name:	G protein-coupled receptor 157
Database Link:	Entrez Gene 80045 Human Q5UAW9
Background:	Orphan receptor that promotes neuronal differentiation of radial glial progenitors (RGPs). The activity of this receptor is mediated by a G(q)-protein that activates a phosphatidylinositol-calcium second messenger.
Synonyms:	F730108M23Rik; MGC109533



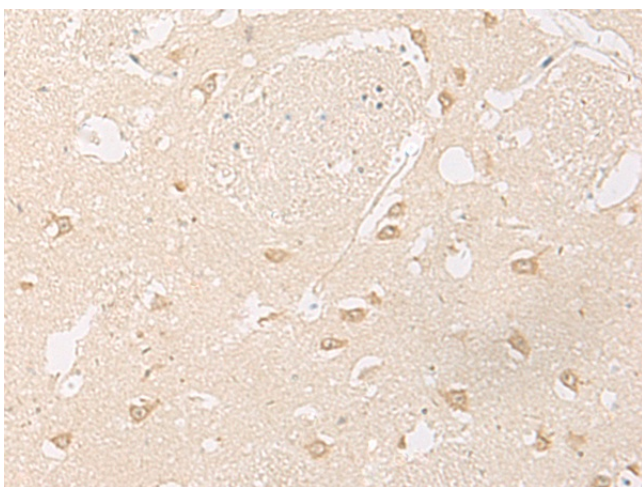
[View online »](#)

Product images:

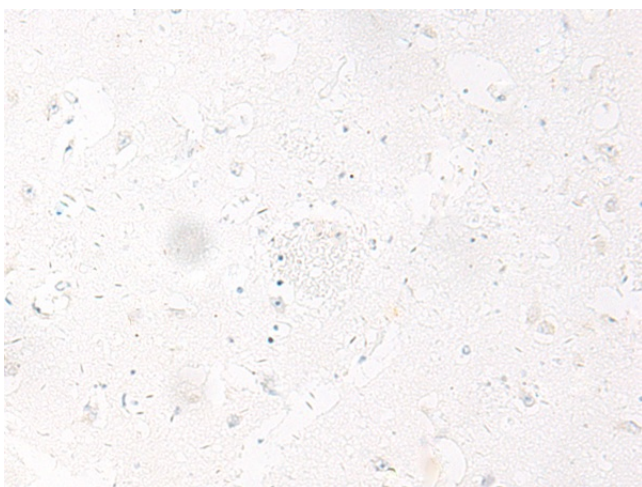
Immunohistochemistry of paraffin-embedded Human breast cancer tissue using TA372676 (GPR157 Antibody) at dilution 1/60 (Original magnification: $\times 200$)



Immunohistochemistry of paraffin-embedded Human breast cancer tissue using TA372676 (GPR157 Antibody) at dilution 1/60, treated with synthetic peptide. (Original magnification: $\times 200$)



Immunohistochemistry of paraffin-embedded Human brain tissue using TA372676 (GPR157 Antibody) at dilution 1/60 (Original magnification: ×200)



Immunohistochemistry of paraffin-embedded Human brain tissue using TA372676 (GPR157 Antibody) at dilution 1/60, treated with synthetic peptide. (Original magnification: ×200)