

Product datasheet for **TA372674S**

GPR142 Rabbit Polyclonal Antibody

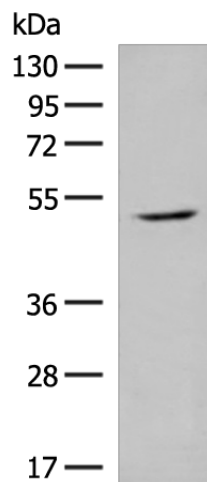
Product data:

Product Type:	Primary Antibodies
Applications:	IHC, WB
Recommended Dilution:	WB: 200-1000 WB positive control: Hela cell lysate IHC: 10-50 Positive control: Human tonsil Predicted cell location: Cell membrane and Cytoplasm
Reactivity:	Human
Host:	Rabbit
Isotype:	IgG
Clonality:	Polyclonal
Immunogen:	Synthetic peptide of human GPR142
Formulation:	pH7.4 PBS, 0.05% NaN ₃ , 40% Glycerol
Concentration:	lot specific
Purification:	Antigen affinity purification
Conjugation:	Unconjugated
Storage:	Store at -20°C.
Stability:	1 year
Predicted Protein Size:	51 kDa
Gene Name:	G protein-coupled receptor 142
Database Link:	Entrez Gene 350383 Human Q7Z601
Background:	GPR142 is a member of the rhodopsin family of G protein-coupled receptors (GPRs) (Fredriksson et al., 2003 [PubMed 14623098]).
Synonyms:	PGR2

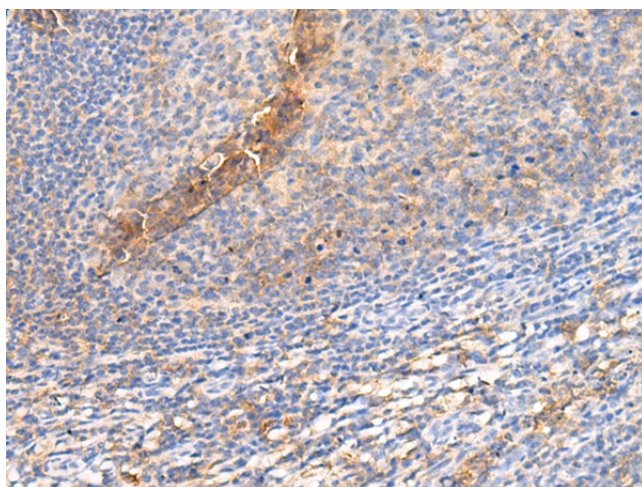


[View online »](#)

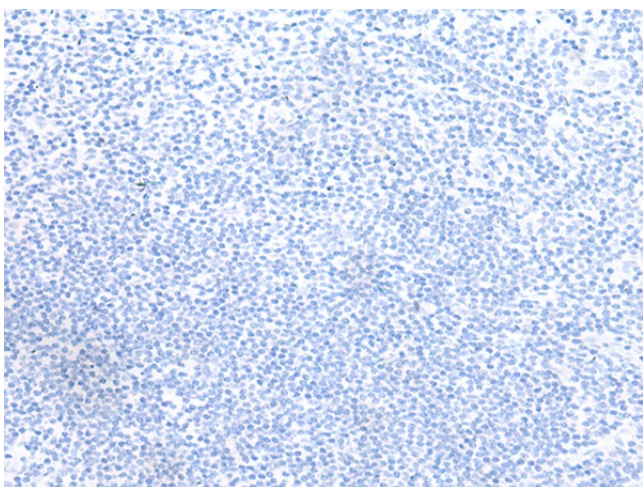
Product images:



Gel: 8%SDS-PAGE
Lysate: 40 μ g
Lane: HeLa cell lysate
Primary antibody: [TA372674] (GPR142 Antibody) at dilution 1/250
Secondary antibody: Goat anti rabbit IgG at 1/8000 dilution
Exposure time: 1 minute



Immunohistochemistry of paraffin-embedded Human tonsil tissue using [TA372674] (GPR142 Antibody) at dilution 1/20 (Original magnification: \times 200)



Immunohistochemistry of paraffin-embedded Human tonsil tissue using [TA372674] (GPR142 Antibody) at dilution 1/20, treated with synthetic peptide. (Original magnification: $\times 200$)