

Product datasheet for **TA372666S**

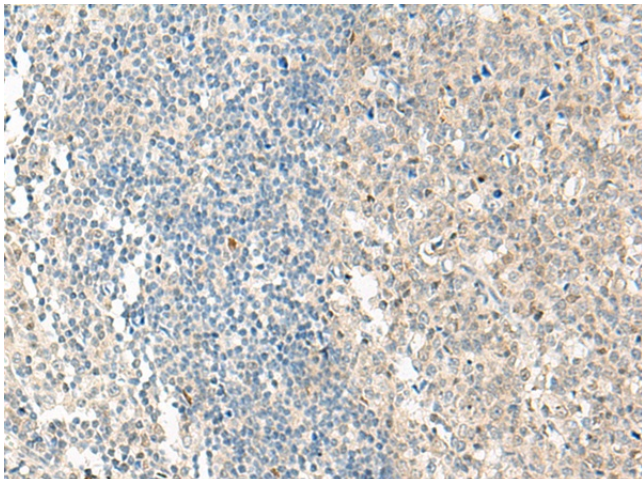
GPR7 (NPBWR1) Rabbit Polyclonal Antibody

Product data:

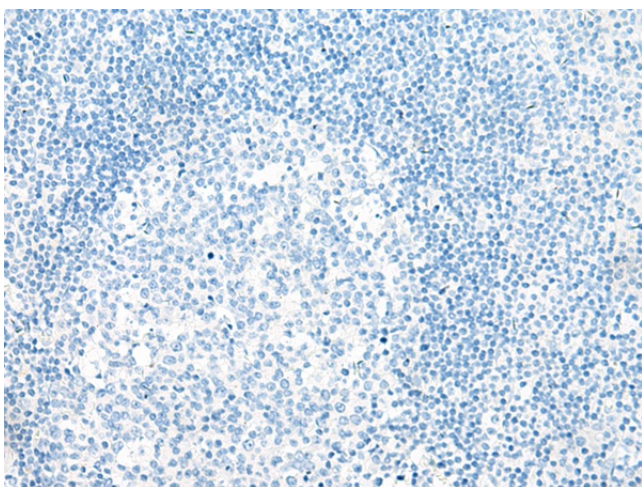
Product Type:	Primary Antibodies
Applications:	IHC
Recommended Dilution:	IHC: 30-150 Positive control: Human tonsil Predicted cell location: Cell membrane
Reactivity:	Human, Mouse, Rat
Host:	Rabbit
Isotype:	IgG
Clonality:	Polyclonal
Immunogen:	Synthetic peptide of human NPBWR1
Formulation:	pH7.4 PBS, 0.05% NaN ₃ , 40% Glycerol
Concentration:	lot specific
Purification:	Antigen affinity purification
Conjugation:	Unconjugated
Storage:	Store at -20°C.
Stability:	1 year
Gene Name:	neuropeptides B/W receptor 1
Database Link:	Entrez Gene 2831 Human P48145
Background:	Interacts specifically with a number of opioid ligands. Receptor for neuropeptides B and W, which may be involved in neuroendocrine system regulation, food intake and the organization of other signals. Has a higher affinity for neuropeptide B.
Synonyms:	GPR7; MGC129755



[View online »](#)

Product images:

Immunohistochemistry of paraffin-embedded Human tonsil tissue using [TA372666] (NPBWR1 Antibody) at dilution 1/50 (Original magnification: ×200)



Immunohistochemistry of paraffin-embedded Human tonsil tissue using [TA372666] (NPBWR1 Antibody) at dilution 1/50, treated with synthetic peptide. (Original magnification: ×200)