

## Product datasheet for **TA372663S**

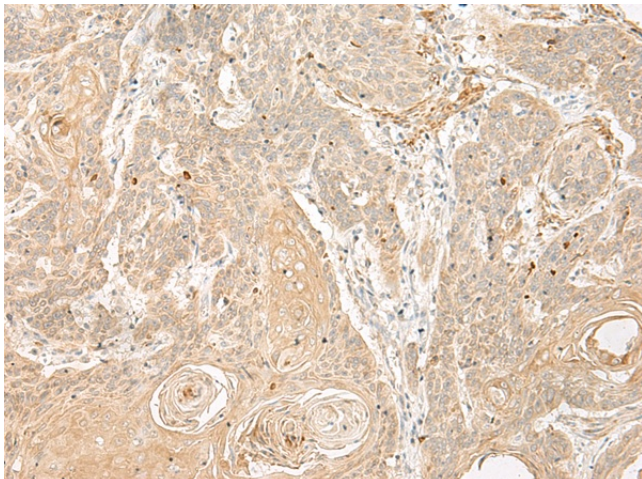
### **GPR58 (TAAR2) Rabbit Polyclonal Antibody**

#### **Product data:**

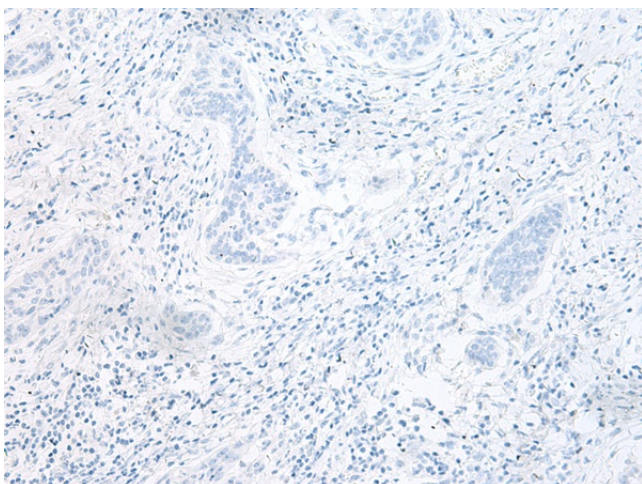
Product Type:	Primary Antibodies
Applications:	IHC
Recommended Dilution:	IHC: 30-150 Positive control: Human esophagus cancer Predicted cell location: Cell membrane
Reactivity:	Human, Mouse, Rat
Host:	Rabbit
Isotype:	IgG
Clonality:	Polyclonal
Immunogen:	Synthetic peptide of human TAAR2
Formulation:	pH7.4 PBS, 0.05% NaN <sub>3</sub> , 40% Glycerol
Concentration:	lot specific
Purification:	Antigen affinity purification
Conjugation:	Unconjugated
Storage:	Store at -20°C.
Stability:	1 year
Gene Name:	trace amine associated receptor 2
Database Link:	<a href="#">Entrez Gene 9287 Human Q9P1P5</a>
Background:	Orphan receptor.
Synonyms:	GPR58; OTTHUMP00000017225



[View online »](#)

**Product images:**

Immunohistochemistry of paraffin-embedded Human esophagus cancer tissue using [TA372663] (TAAR2 Antibody) at dilution 1/30 (Original magnification:  $\times 200$ )



Immunohistochemistry of paraffin-embedded Human esophagus cancer tissue using [TA372663] (TAAR2 Antibody) at dilution 1/30, treated with synthetic peptide. (Original magnification:  $\times 200$ )