

Product datasheet for **TA372662S**

GPR52 Rabbit Polyclonal Antibody

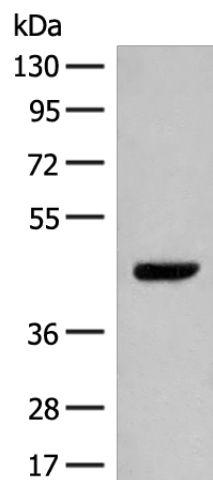
Product data:

Product Type:	Primary Antibodies
Applications:	WB
Recommended Dilution:	WB: 500-2000 WB positive control: NIH/3T3 cell lysate
Reactivity:	Human, Mouse
Host:	Rabbit
Isotype:	IgG
Clonality:	Polyclonal
Immunogen:	Synthetic peptide of human GPR52
Formulation:	pH7.4 PBS, 0.05% NaN ₃ , 40% Glycerol
Concentration:	lot specific
Purification:	Antigen affinity purification
Conjugation:	Unconjugated
Storage:	Store at -20°C.
Stability:	1 year
Predicted Protein Size:	41 kDa
Gene Name:	G protein-coupled receptor 52
Database Link:	Entrez Gene 9293 Human Q9Y2T5
Background:	Members of the G protein-coupled receptor (GPR) family play important roles in signal transduction from the external environment to the inside of the cell.
Synonyms:	MGC111751



[View online »](#)

Product images:



Gel: 8%SDS-PAGE

Lysate: 40 μ g

Lane: NIH/3T3 cell lysate

Primary antibody: [TA372662] (GPR52 Antibody)
at dilution 1/400

Secondary antibody: Goat anti rabbit IgG at
1/8000 dilution

Exposure time: 20 seconds