

Product datasheet for **TA372656**

CD20 (MS4A1) Rabbit Polyclonal Antibody

Product data:

| | |
|-------------------------|--|
| Product Type: | Primary Antibodies |
| Applications: | IHC, WB |
| Recommended Dilution: | WB: 200-1000 WB positive control: Raji cell lysate IHC: 30-150 Positive control: Human tonsil Predicted cell location: Cell membrane |
| Reactivity: | Human |
| Host: | Rabbit |
| Isotype: | IgG |
| Clonality: | Polyclonal |
| Immunogen: | Synthetic peptide of human MS4A1 |
| Formulation: | pH7.4 PBS, 0.05% NaN ₃ , 40% Glycerol |
| Concentration: | lot specific |
| Purification: | Antigen affinity purification |
| Conjugation: | Unconjugated |
| Storage: | Store at -20°C. |
| Stability: | 1 year |
| Predicted Protein Size: | 33 kDa |
| Gene Name: | membrane spanning 4-domains A1 |
| Database Link: | Entrez Gene 931 Human P11836 |



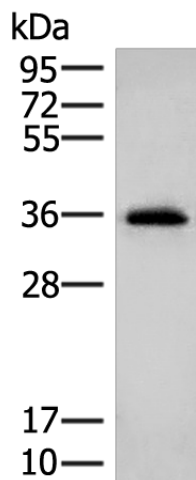
[View online »](#)

Background:

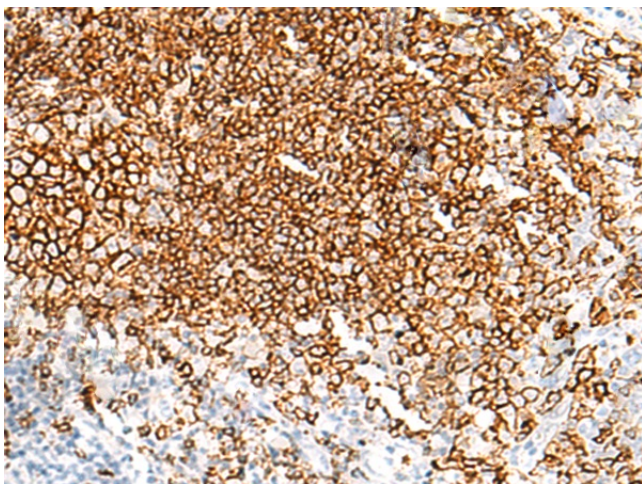
This gene encodes a member of the membrane-spanning 4A gene family. Members of this nascent protein family are characterized by common structural features and similar intron/exon splice boundaries and display unique expression patterns among hematopoietic cells and nonlymphoid tissues. This gene encodes a B-lymphocyte surface molecule which plays a role in the development and differentiation of B-cells into plasma cells. This family member is localized to 11q12, among a cluster of family members. Alternative splicing of this gene results in two transcript variants which encode the same protein.

Synonyms:

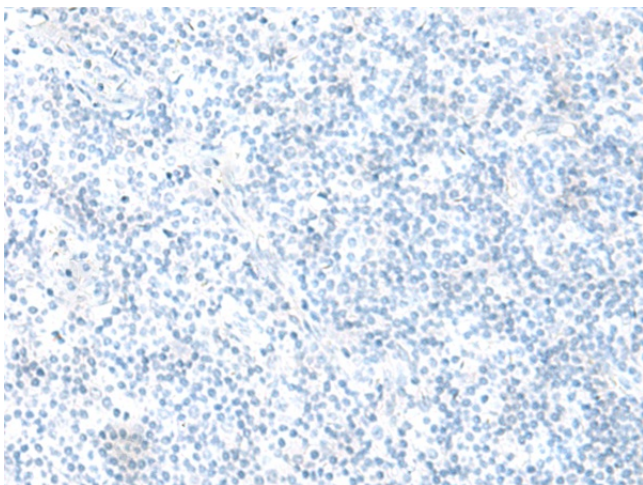
B1; Bp35; CD20; LEU-16; MGC3969; MS4A2; S7

Product images:

Gel: 12%SDS-PAGE
Lysate: 40 µg
Lane: Raji cell lysate
Primary antibody: TA372656 (MS4A1 Antibody) at dilution 1/200
Secondary antibody: Goat anti rabbit IgG at 1/8000 dilution
Exposure time: 30 seconds



Immunohistochemistry of paraffin-embedded Human tonsil tissue using TA372656 (MS4A1 Antibody) at dilution 1/20 (Original magnification: ×200)



Immunohistochemistry of paraffin-embedded Human tonsil tissue using TA372656 (MS4A1 Antibody) at dilution 1/20, treated with synthetic peptide. (Original magnification: $\times 200$)