

## Product datasheet for **TA372654S**

### HBA-T2 (HBB) Rabbit Polyclonal Antibody

#### Product data:

Product Type:	Primary Antibodies
Applications:	IHC, WB
Recommended Dilution:	WB: 200-1000 WB positive control: Mouse liver tissue, Human heart tissue and Human plasma solution lysates IHC: 10-50 Positive control: Human liver cancer Predicted cell location: Cytoplasm
Reactivity:	Human, Mouse, Rat
Host:	Rabbit
Isotype:	IgG
Clonality:	Polyclonal
Immunogen:	Synthetic peptide of human HBB
Formulation:	pH7.4 PBS, 0.05% NaN <sub>3</sub> , 40% Glycerol
Concentration:	lot specific
Purification:	Antigen affinity purification
Conjugation:	Unconjugated
Storage:	Store at -20°C.
Stability:	1 year
Predicted Protein Size:	16 kDa
Gene Name:	hemoglobin subunit beta
Database Link:	<a href="#">Entrez Gene 3043 Human P68871</a>



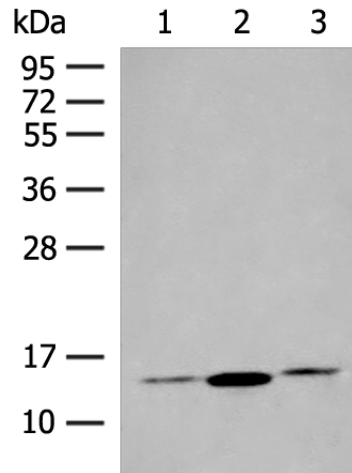
[View online »](#)

**Background:**

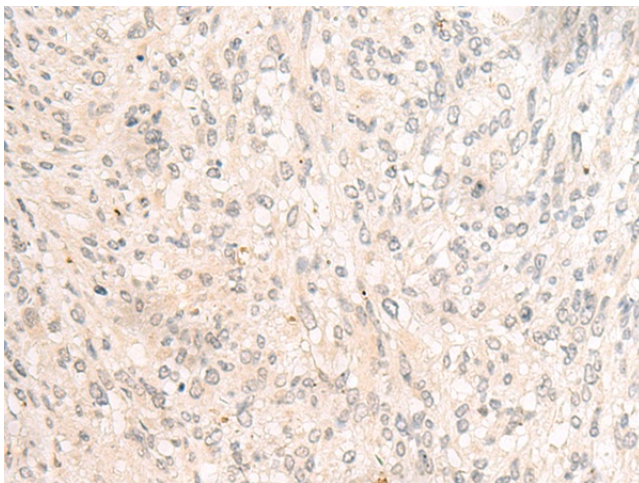
The alpha (HBA) and beta (HBB) loci determine the structure of the 2 types of polypeptide chains in adult hemoglobin, Hb A. The normal adult hemoglobin tetramer consists of two alpha chains and two beta chains. Mutant beta globin causes sickle cell anemia. Absence of beta chain causes beta-zero-thalassemia. Reduced amounts of detectable beta globin causes beta-plus-thalassemia. The order of the genes in the beta-globin cluster is 5'-epsilon -- gamma-G -- gamma-A -- delta -- beta--3'.

**Synonyms:**

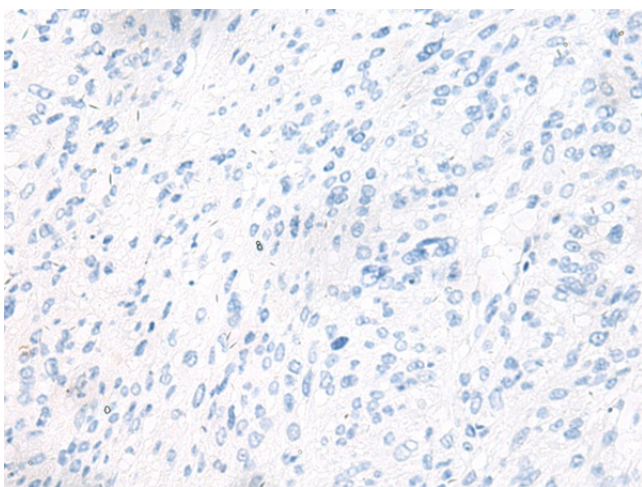
beta-globin; CD113t-C; HBD

**Product images:**


Gel: 12%SDS-PAGE  
 Lysate: 40 µg  
 Lane 1-3: Mouse liver tissue  
 Human heart tissue and Human plasma solution  
 lysates  
 Primary antibody: [TA372654] (HBB Antibody) at  
 dilution 1/200  
 Secondary antibody: Goat anti rabbit IgG at  
 1/8000 dilution  
 Exposure time: 1 minute



Immunohistochemistry of paraffin-embedded  
 Human liver cancer tissue using [TA372654] (HBB  
 Antibody) at dilution 1/20 (Original magnification:  
 ×200)



Immunohistochemistry of paraffin-embedded Human liver cancer tissue using [TA372654] (HBB Antibody) at dilution 1/20, treated with synthetic peptide. (Original magnification:  $\times 200$ )