

Product datasheet for **TA372651**

p114RhoGEF (ARHGEF18) Rabbit Polyclonal Antibody

Product data:

Product Type:	Primary Antibodies
Applications:	WB
Recommended Dilution:	WB: 200-1000 WB positive control: 293T and Hela cell lysates
Reactivity:	Human
Host:	Rabbit
Isotype:	IgG
Clonality:	Polyclonal
Immunogen:	Synthetic peptide of human ARHGEF18
Formulation:	pH7.4 PBS, 0.05% NaN ₃ , 40% Glycerol
Concentration:	lot specific
Purification:	Antigen affinity purification
Conjugation:	Unconjugated
Storage:	Store at -20°C.
Stability:	1 year
Predicted Protein Size:	152 kDa
Gene Name:	Rho/Rac guanine nucleotide exchange factor 18
Database Link:	Entrez Gene 23370 Human Q6ZSZ5

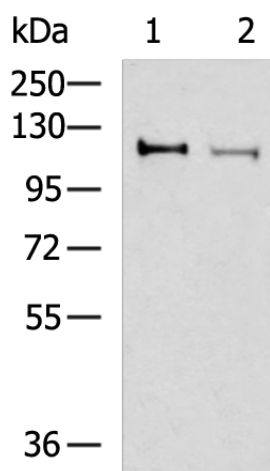
Background: Rho GTPases are GTP binding proteins that regulate a wide spectrum of cellular functions. These cellular processes include cytoskeletal rearrangements, gene transcription, cell growth and motility. Activation of Rho GTPases is under the direct control of guanine nucleotide exchange factors (GEFs). The protein encoded by this gene is a guanine nucleotide exchange factor and belongs to the Rho GTPase GEF family. Family members share a common feature, a Dbl (DH) homology domain followed by a pleckstrin (PH) homology domain. Alternatively spliced transcript variants encoding different isoforms have been identified.

Synonyms: KIAA0521; MGC15913; P114-RHO-GEF; P114-RhoGEF; p114RhoGEF; SA-RhoGEF



[View online »](#)

Product images:



Gel: 6%SDS-PAGE
Lysate: 40 μ g
Lane 1-2: 293T and HeLa cell lysates
Primary antibody: TA372651 (ARHGEF18 Antibody) at dilution 1/250
Secondary antibody: Goat anti rabbit IgG at 1/5000 dilution
Exposure time: 2 minutes