

Product datasheet for **TA372650S**

ATP5ME Rabbit Polyclonal Antibody

Product data:

Product Type:	Primary Antibodies
Applications:	IHC, WB
Recommended Dilution:	WB: 500-2000 WB positive control: Human liver tissue, PC-3 cell, 293T cell, Human fetal liver tissue, Human heart tissue lysates IHC: 30-150 Positive control: Human esophagus cancer Predicted cell location: Cytoplasm
Reactivity:	Human, Mouse, Rat
Host:	Rabbit
Isotype:	IgG
Clonality:	Polyclonal
Immunogen:	Synthetic peptide of human ATP5ME
Formulation:	pH7.4 PBS, 0.05% NaN ₃ , 40% Glycerol
Concentration:	lot specific
Purification:	Antigen affinity purification
Conjugation:	Unconjugated
Storage:	Store at -20°C.
Stability:	1 year
Predicted Protein Size:	8 kDa
Gene Name:	ATP synthase, H ⁺ transporting, mitochondrial Fo complex subunit E
Database Link:	Entrez Gene 521 Human P56385



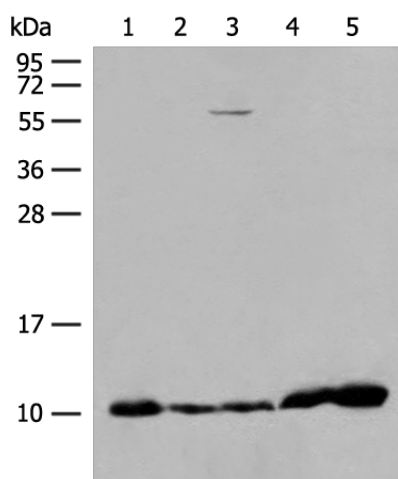
[View online »](#)

Background:

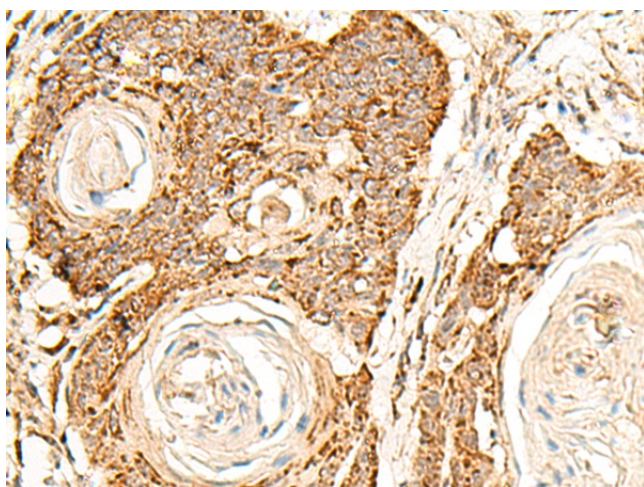
Mitochondrial ATP synthase catalyzes ATP synthesis, utilizing an electrochemical gradient of protons across the inner membrane during oxidative phosphorylation. It is composed of two linked multi-subunit complexes: the soluble catalytic core, F1, and the membrane-spanning component, Fo, which comprises the proton channel. The F1 complex consists of 5 different subunits (alpha, beta, gamma, delta, and epsilon) assembled in a ratio of 3 alpha, 3 beta, and a single representative of the other 3. The Fo seems to have nine subunits (a, b, c, d, e, f, g, F6 and 8). This gene encodes the e subunit of the Fo complex. Alternative splicing results in multiple transcript variants.[provided by RefSeq, Jun 2010]

Synonyms:

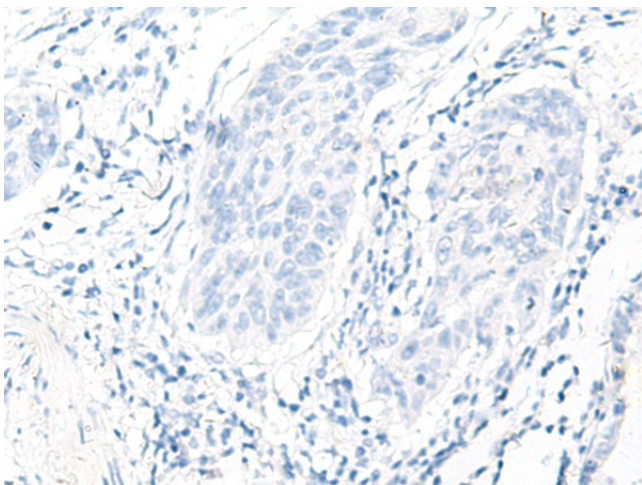
ATP5K; MGC12532

Product images:


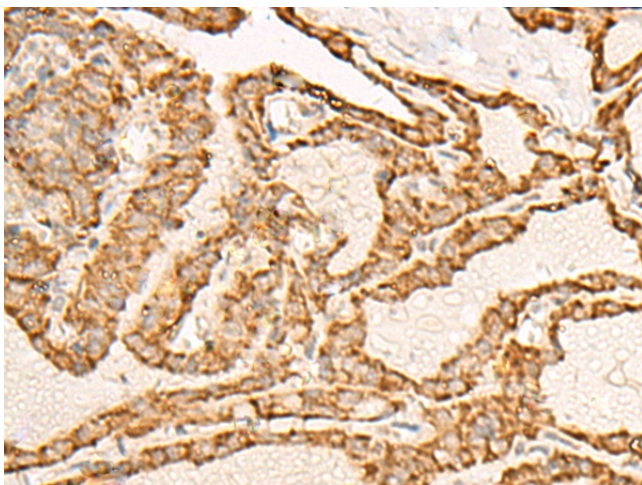
Gel: 12%SDS-PAGE
 Lysate: 40 µg
 Lane 1-5: Human liver tissue
 PC-3 cell
 293T cell
 Human fetal liver tissue
 Human heart tissue lysates
 Primary antibody: [TA372650] (ATP5ME Antibody)
 at dilution 1/200
 Secondary antibody: Goat anti rabbit IgG at
 1/8000 dilution
 Exposure time: 15 seconds



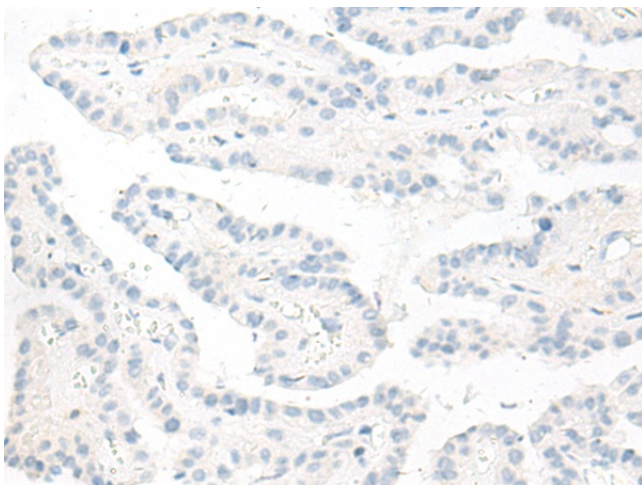
Immunohistochemistry of paraffin-embedded
 Human esophagus cancer tissue using
 [TA372650] (ATP5ME Antibody) at dilution 1/30
 (Original magnification: ×200)



Immunohistochemistry of paraffin-embedded Human esophagus cancer tissue using [TA372650] (ATP5ME Antibody) at dilution 1/30, treated with synthetic peptide. (Original magnification: ×200)



Immunohistochemistry of paraffin-embedded Human thyroid cancer tissue using [TA372650] (ATP5ME Antibody) at dilution 1/30 (Original magnification: ×200)



Immunohistochemistry of paraffin-embedded Human thyroid cancer tissue using [TA372650] (ATP5ME Antibody) at dilution 1/30, treated with synthetic peptide. (Original magnification: ×200)