

Product datasheet for **TA372645S**

GPR22 Rabbit Polyclonal Antibody

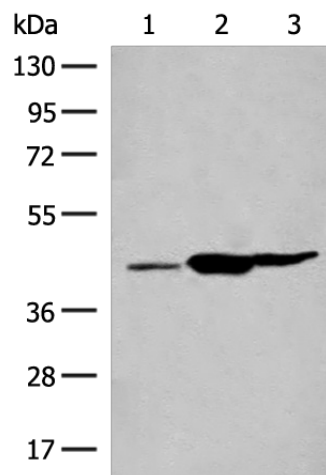
Product data:

Product Type:	Primary Antibodies
Applications:	IHC, WB
Recommended Dilution:	WB: 500-2000 WB positive control: Mouse liver tissue, Mouse kidney tissue, Rat brain tissue lysates IHC: 40-200 Positive control: Human liver cancer Predicted cell location: Cell membrane
Reactivity:	Human, Mouse
Host:	Rabbit
Isotype:	IgG
Clonality:	Polyclonal
Immunogen:	Synthetic peptide of human GPR22
Formulation:	pH7.4 PBS, 0.05% NaN ₃ , 40% Glycerol
Concentration:	lot specific
Purification:	Antigen affinity purification
Conjugation:	Unconjugated
Storage:	Store at -20°C.
Stability:	1 year
Predicted Protein Size:	49 kDa
Gene Name:	G protein-coupled receptor 22
Database Link:	Entrez Gene 2845 Human Q99680
Background:	This gene is a member of the G-protein coupled receptor 1 family and encodes a multi-pass membrane protein.
Synonyms:	2900068K05Rik; AW061316

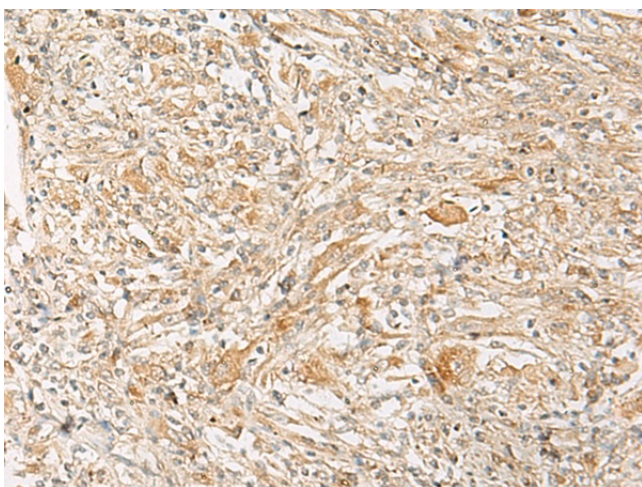


[View online »](#)

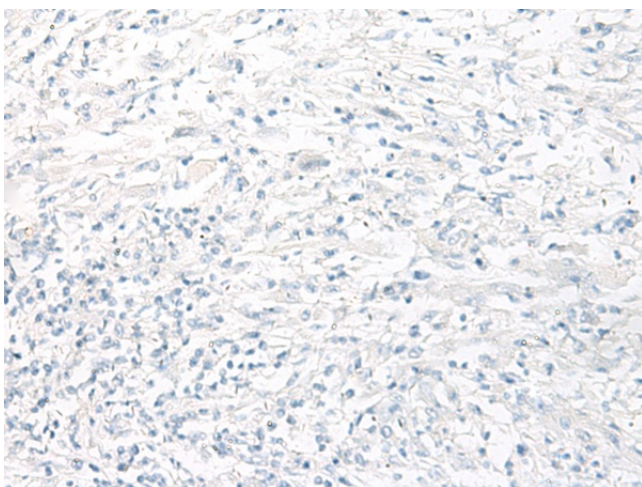
Product images:



Gel: 8%SDS-PAGE
Lysate: 40 μ g
Lane 1-3: Mouse liver tissue
Mouse kidney tissue
Rat brain tissue lysates
Primary antibody: [TA372645] (GPR22 Antibody)
at dilution 1/500
Secondary antibody: Goat anti rabbit IgG at
1/8000 dilution
Exposure time: 10 seconds



Immunohistochemistry of paraffin-embedded
Human liver cancer tissue using [TA372645]
(GPR22 Antibody) at dilution 1/50 (Original
magnification: \times 200)



Immunohistochemistry of paraffin-embedded Human liver cancer tissue using [TA372645] (GPR22 Antibody) at dilution 1/50, treated with synthetic peptide. (Original magnification: ×200)