

Product datasheet for **TA372640S**

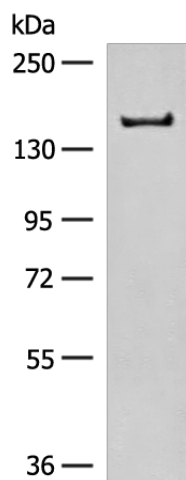
GPR116 (ADGRF5) Rabbit Polyclonal Antibody

Product data:

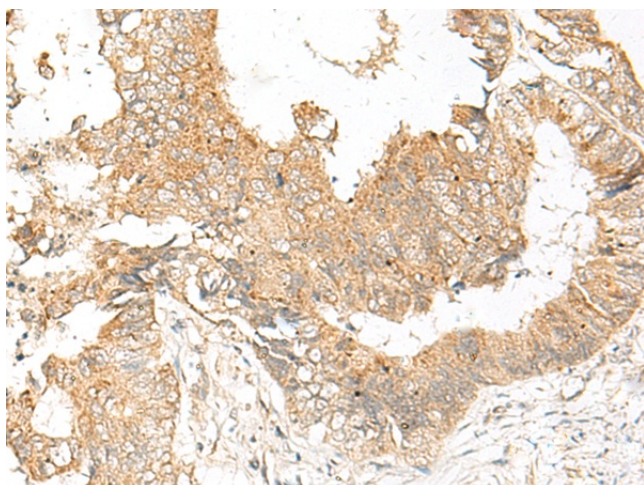
Product Type:	Primary Antibodies
Applications:	IHC, WB
Recommended Dilution:	WB: 200-1000 WB positive control: 293T cell lysate IHC: 30-150 Positive control: Human colorectal cancer Predicted cell location: Cell membrane
Reactivity:	Human
Host:	Rabbit
Isotype:	IgG
Clonality:	Polyclonal
Immunogen:	Synthetic peptide of human ADGRF5
Formulation:	pH7.4 PBS, 0.05% NaN ₃ , 40% Glycerol
Concentration:	lot specific
Purification:	Antigen affinity purification
Conjugation:	Unconjugated
Storage:	Store at -20°C.
Stability:	1 year
Predicted Protein Size:	150 kDa
Gene Name:	adhesion G protein-coupled receptor F5
Database Link:	Entrez Gene 221395 Human Q8IZF2
Background:	Receptor that plays a critical role in lung surfactant homeostasis. May play a role in controlling adipocyte function.



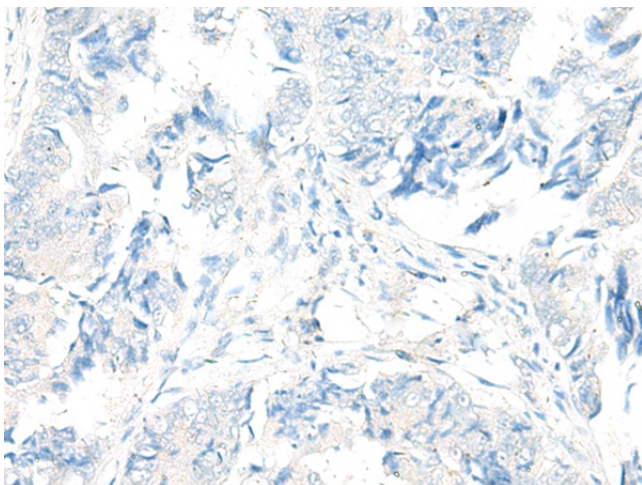
[View online »](#)

Product images:

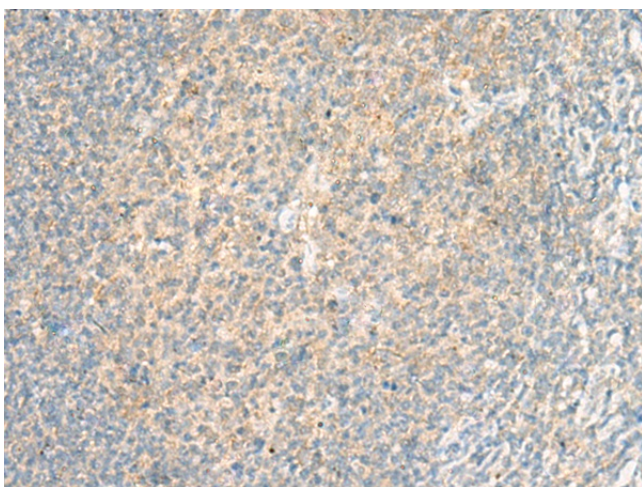
Gel: 6%SDS-PAGE
Lysate: 40 µg
Lane: 293T cell lysate
Primary antibody: [TA372640] (ADGRF5 Antibody)
at dilution 1/250
Secondary antibody: Goat anti rabbit IgG at
1/8000 dilution
Exposure time: 90 seconds



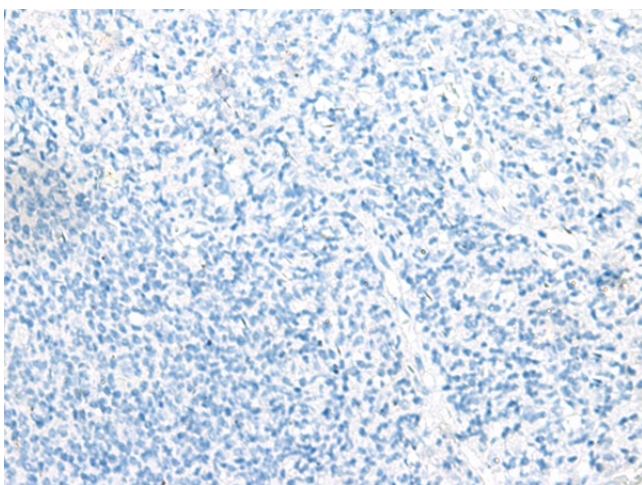
Immunohistochemistry of paraffin-embedded
Human colorectal cancer tissue using [TA372640]
(ADGRF5 Antibody) at dilution 1/35 (Original
magnification: ×200)



Immunohistochemistry of paraffin-embedded Human colorectal cancer tissue using [TA372640] (ADGRF5 Antibody) at dilution 1/35, treated with synthetic peptide. (Original magnification: $\times 200$)



Immunohistochemistry of paraffin-embedded Human tonsil tissue using [TA372640] (ADGRF5 Antibody) at dilution 1/35 (Original magnification: $\times 200$)



Immunohistochemistry of paraffin-embedded Human tonsil tissue using [TA372640] (ADGRF5 Antibody) at dilution 1/35, treated with synthetic peptide. (Original magnification: $\times 200$)