

## Product datasheet for **TA372633**

### **GOLPH4 (GOLIM4) Rabbit Polyclonal Antibody**

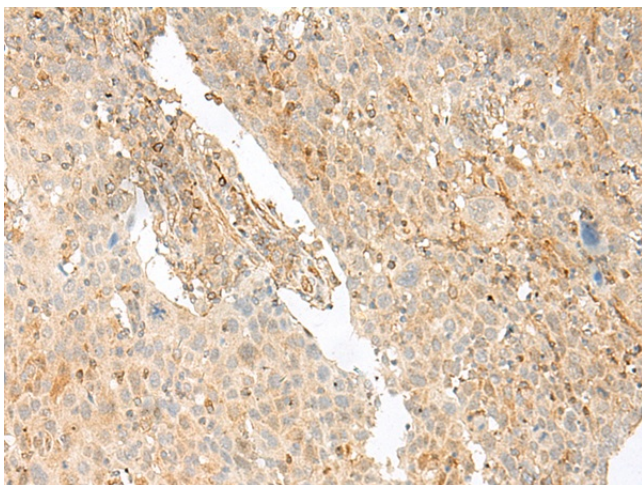
#### Product data:

<b>Product Type:</b>	Primary Antibodies
<b>Applications:</b>	IHC
<b>Recommended Dilution:</b>	IHC: 30-150 Positive control: Human cervical cancer Predicted cell location: Cytoplasm
<b>Reactivity:</b>	Human, Mouse, Rat
<b>Host:</b>	Rabbit
<b>Isotype:</b>	IgG
<b>Clonality:</b>	Polyclonal
<b>Immunogen:</b>	Synthetic peptide of human GOLIM4
<b>Formulation:</b>	pH7.4 PBS, 0.05% NaN <sub>3</sub> , 40% Glycerol
<b>Concentration:</b>	lot specific
<b>Purification:</b>	Antigen affinity purification
<b>Conjugation:</b>	Unconjugated
<b>Storage:</b>	Store at -20°C.
<b>Stability:</b>	1 year
<b>Gene Name:</b>	golgi integral membrane protein 4
<b>Database Link:</b>	<a href="#">Entrez Gene 27333 Human</a> <a href="#">O00461</a>
<b>Background:</b>	The Golgi complex plays a key role in the sorting and modification of proteins exported from the endoplasmic reticulum. The protein encoded by this gene is a type II Golgi-resident protein. It may process proteins synthesized in the rough endoplasmic reticulum and assist in the transport of protein cargo through the Golgi apparatus.

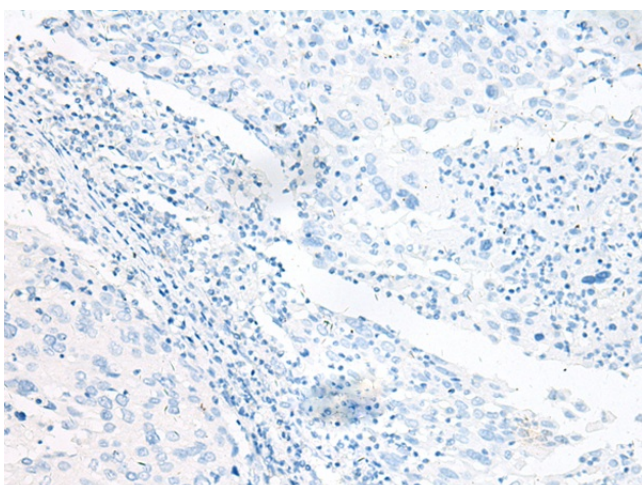


**Synonyms:** GIMPC; GOLPH4; GPP130; P138

**Product images:**



Immunohistochemistry of paraffin-embedded Human cervical cancer tissue using TA372633 (GOLIM4 Antibody) at dilution 1/25 (Original magnification: ×200)



Immunohistochemistry of paraffin-embedded Human cervical cancer tissue using TA372633 (GOLIM4 Antibody) at dilution 1/25, treated with synthetic peptide. (Original magnification: ×200)