

Product datasheet for **TA372623S**

GLUT8 (SLC2A8) Rabbit Polyclonal Antibody

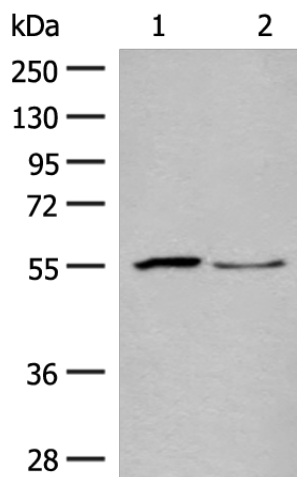
Product data:

Product Type:	Primary Antibodies
Applications:	WB
Recommended Dilution:	WB: 500-2000 WB positive control: Human placenta tissue and PC3 cell lysates
Reactivity:	Human, Mouse, Rat
Host:	Rabbit
Isotype:	IgG
Clonality:	Polyclonal
Immunogen:	Synthetic peptide of human SLC2A8
Formulation:	pH7.4 PBS, 0.05% NaN ₃ , 40% Glycerol
Concentration:	lot specific
Purification:	Antigen affinity purification
Conjugation:	Unconjugated
Storage:	Store at -20°C.
Stability:	1 year
Predicted Protein Size:	51 kDa
Gene Name:	solute carrier family 2 member 8
Database Link:	Entrez Gene 29988 Human Q9NY64
Background:	This gene belongs to the solute carrier 2A family, which includes intracellular glucose transporters. Based on sequence comparison, the glucose transporters are grouped into three classes and this gene is a member of class II. The encoded protein, like other members of the family, contains several conserved residues and motifs and 12 transmembrane domains with both amino and carboxyl ends being on the cytosolic side of the membrane. Alternatively spliced transcript variants have been described for this gene.
Synonyms:	GLUT-8; GLUT8; GLUTX1



[View online »](#)

Product images:



Gel: 8%SDS-PAGE

Lysate: 40 μ g

Lane 1-2: Human placenta tissue and PC3 cell lysates

Primary antibody: [TA372623] (SLC2A8 Antibody) at dilution 1/400

Secondary antibody: Goat anti rabbit IgG at 1/8000 dilution

Exposure time: 1 minute